

FACIAL RECONSTRUCTION: CREATING A FACE



After the Bureau of Criminal Investigation has exhausted all other methods of identifying skeletal remains, a forensic artist can reconstruct the face in the hopes that someone will recognize the person. The process is a combination of science and art.



THE STEPS:



1

A CT scan is made of the skull.

2

The scan is printed in plastic by a 3-D printer.

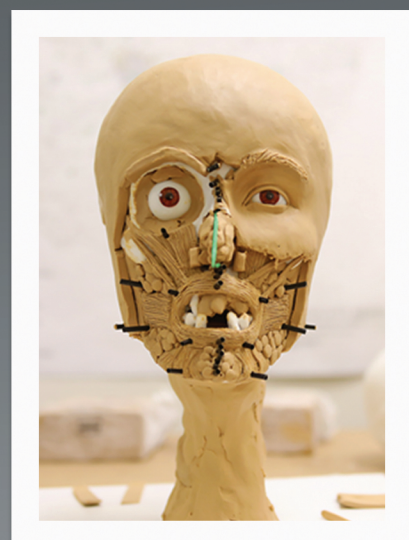


3

The replica skull serves as the base for reconstruction.

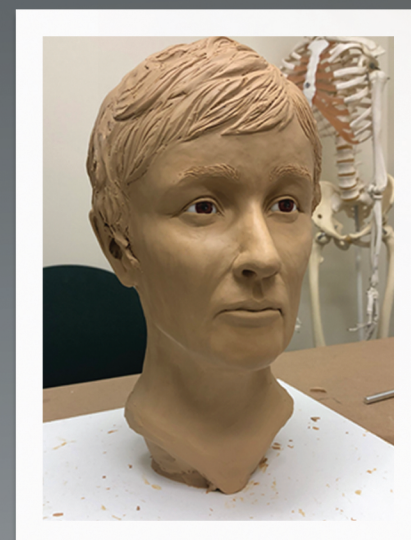
4

Clay “muscles” and glass eyes are added.



5

Coffee stirrers or wooden pegs — cut to exact lengths based on research on the remains — are added as tissue-depth markers.



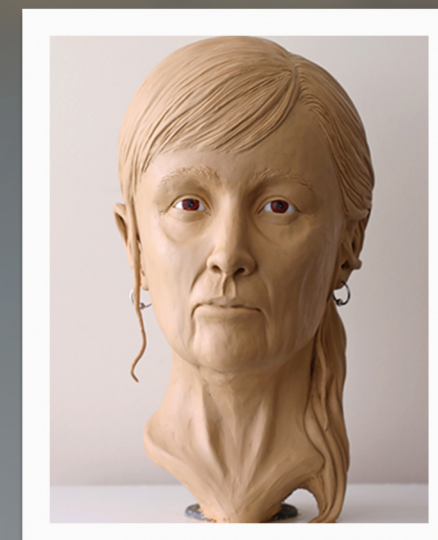
6

Clay “skin” is added, and the face starts to look like a real person.

7

A simple hairstyle is added.

A CURRENT CASE:



In May 2018, this “Jane Doe” was found in Cincinnati, near an apartment complex’s playground. As time passed and no one stepped forward to identify her remains, the Hamilton County coroner asked BCI for help. Forensic Scientist Samantha Molnar applied her skills to build a model of what the woman’s face likely looked like in life, using a plastic replica skull printed by Ohio State University.

ANYONE WHO RECOGNIZES THIS WOMAN SHOULD CONTACT BCI AT 740-845-2406 OR THE HAMILTON COUNTY CORONER’S OFFICE AT 513-946-8739.

• • •

To find out more, visit www.OhioAttorneyGeneral.gov/MissingPersons.



DAVE YOST
OHIO ATTORNEY GENERAL