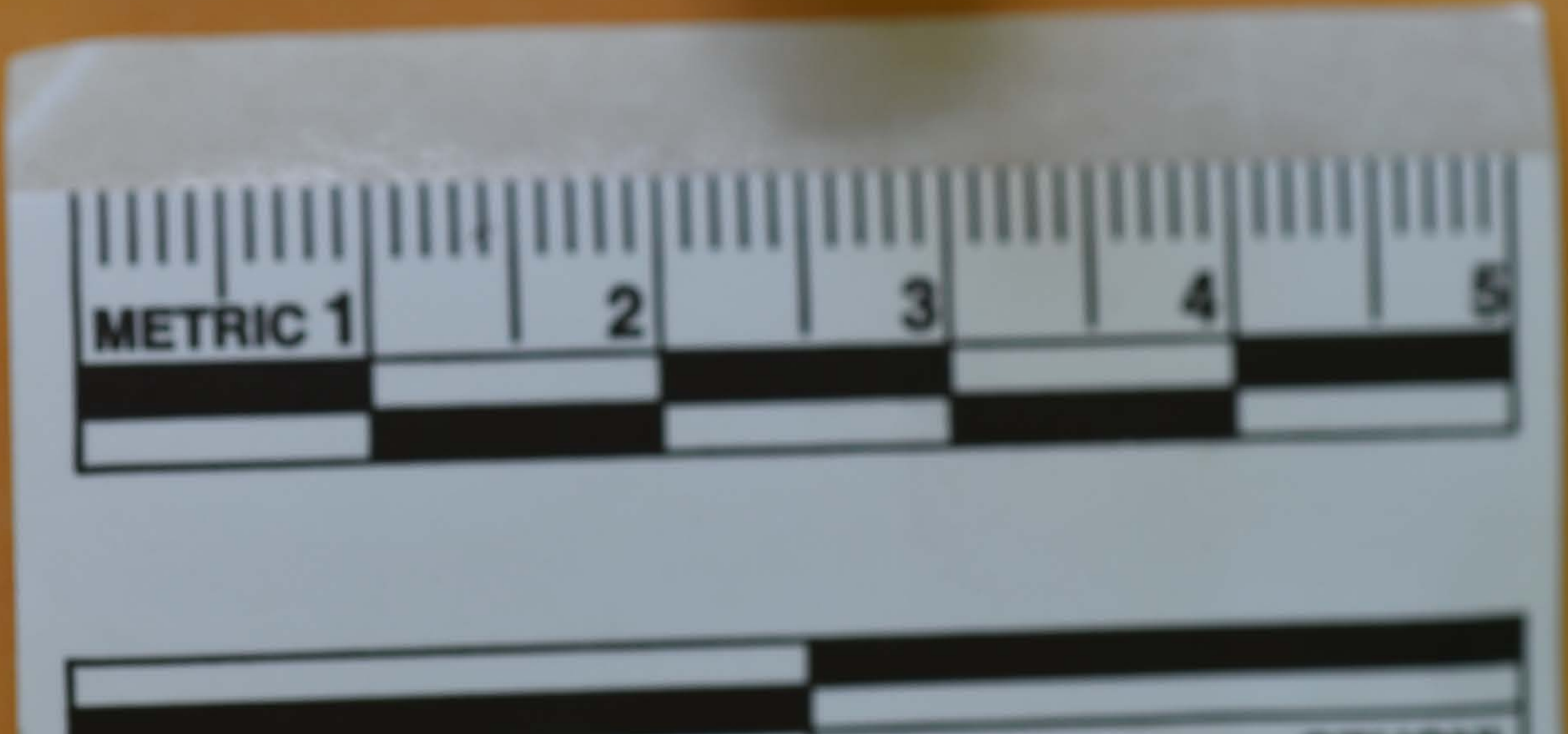




169



16.1



17





18

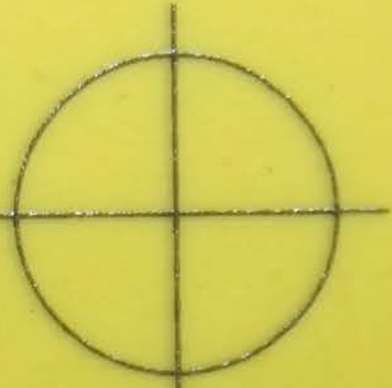
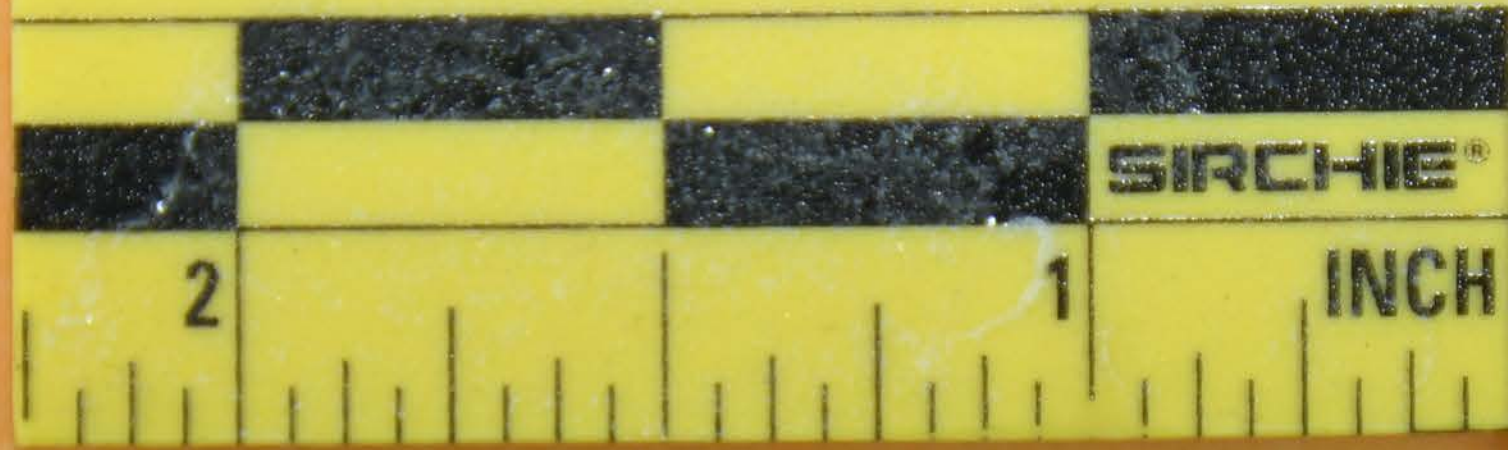




19







20



FLAMMABLE  
KEEP FIRE AWAY



























TIRE - LOADING INFORMATION

OCCUPANTS			VEHICLE CAP. WT.		
FRT.	CTR.	RR.	TOTAL	KG	LBS
3	0	3	6	488	1076

MAX. LOADING @ GVWR SAME AS VEHICLE CAPACITY WEIGHT.  
 1G4HR54K73U181320  
 MODEL: HR69 HAH

TIRE SIZE	SPEED RTG	COLD TIRE PRESSURE
FRT P225/60R16	S	210KPA(30PSI)
RR P225/60R16	S	210KPA(30PSI)
SPA T125/70R16	M	420KPA(60PSI)

IF TIRES ARE HOT, ADD 28KPA(4PSI).  
 SEE OWNER'S MANUAL  FOR MORE INFORMATION.



MFD BY GENERAL MOTORS CORP

DATE	GVWR	GAWR FRT	GAWR RR
11/02	2154 KG	1155 KG	999 KG
	4750 LB	2547 LB	2203 LB

THIS VEHICLE CONFORMS TO ALL APPLICABLE U.S. FEDERAL MOTOR VEHICLE SAFETY, BUMPER, AND THEFT PREVENTION STANDARDS IN EFFECT ON THE DATE OF MANUFACTURE SHOWN ABOVE.  
 1G4HR54K73U181320 TYPE: PASS CAR



# TIRE - LOADING INFORMATION

OCCUPANTS				VEHICLE CAP. WT.	
FRT.	CTR.	RR.	TOTAL	KG	LBS
3	0	3	6	488	1076

MAX. LOADING @ GVWR SAME AS VEHICLE CAPACITY WEIGHT.

**1G4HR54K73U181320**

MODEL: HR69 HAH

	TIRE SIZE	SPEED RTG	COLD TIRE PRESSURE
FRT	P225/60R16	S	210KPA(30PSI)
RR	P225/60R16	S	210KPA(30PSI)
SPA	T125/70R16	M	420KPA(60PSI)

IF TIRES ARE HOT, ADD 28KPA(4PSI).

SEE OWNER'S MANUAL  FOR MORE INFORMATION.



MFD BY GENERAL MOTORS CORP

DATE  
11/02

GVWR  
2154 KG  
4750 LB

GAWR FRT  
1155 KG  
2547 LB

GAWR RR  
999 KG  
2203 LB

THIS VEHICLE CONFORMS TO ALL APPLICABLE U.S. FEDERAL MOTOR VEHICLE SAFETY, BUMPER, AND THEFT PREVENTION STANDARDS IN EFFECT ON THE DATE OF MANUFACTURE SHOWN ABOVE.

1G4HR54K73U181320

TYPE: PASS CAR



**FLAMMABLE**  
**KEEP FIRE AWAY**



SEE CHEMICAL CABINETTS  
SAFETY SHEETS AVAILABLE  
FOR LABORATORY USE ONLY