



Est. 1974

LAKE COUNTY SHERIFF'S OFFICE
REGIONAL
S.W.A.T.

LAKE COUNTY SHERIFF'S OFFICE
S.W.A.T.

2212

CAUTION



1

3

4

2



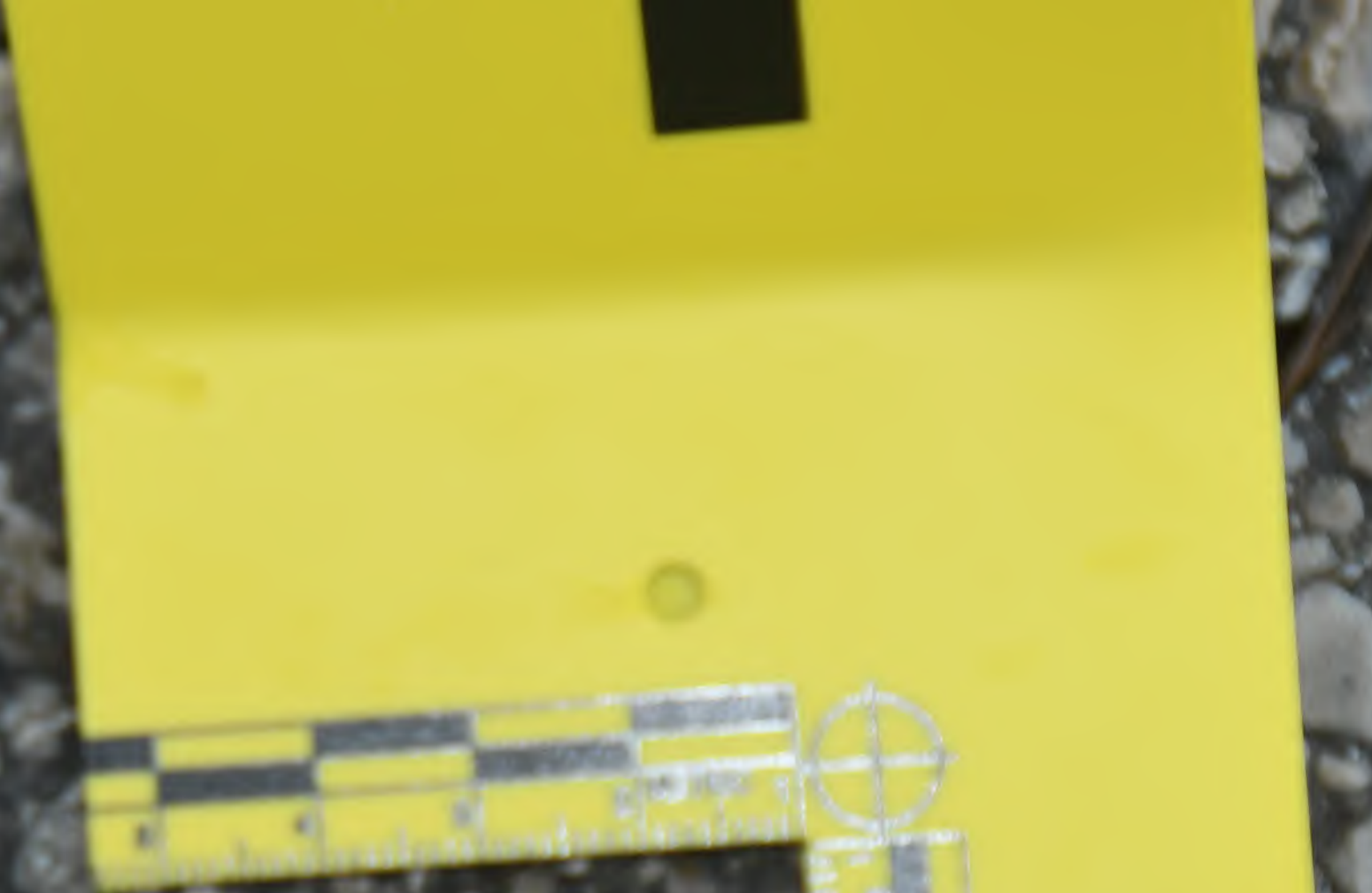
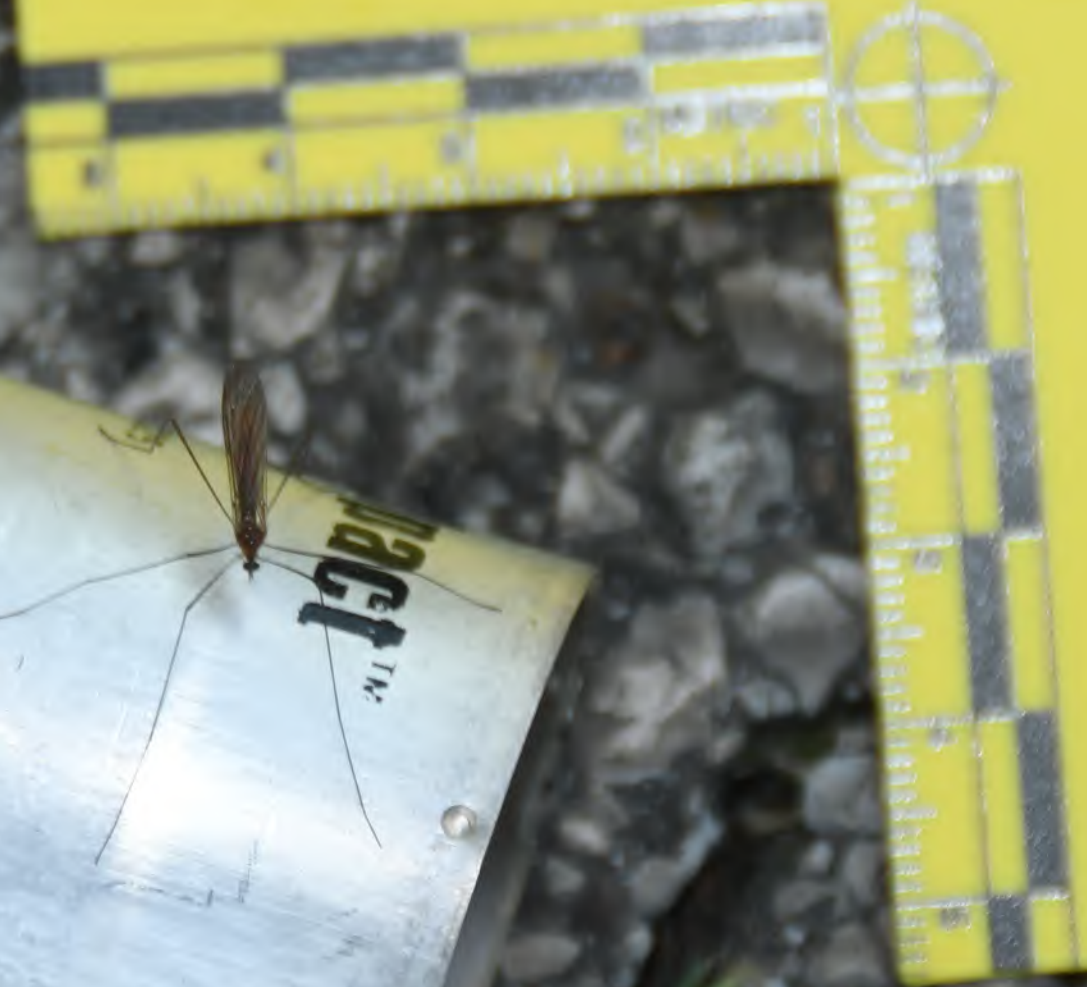
1

2

3

4







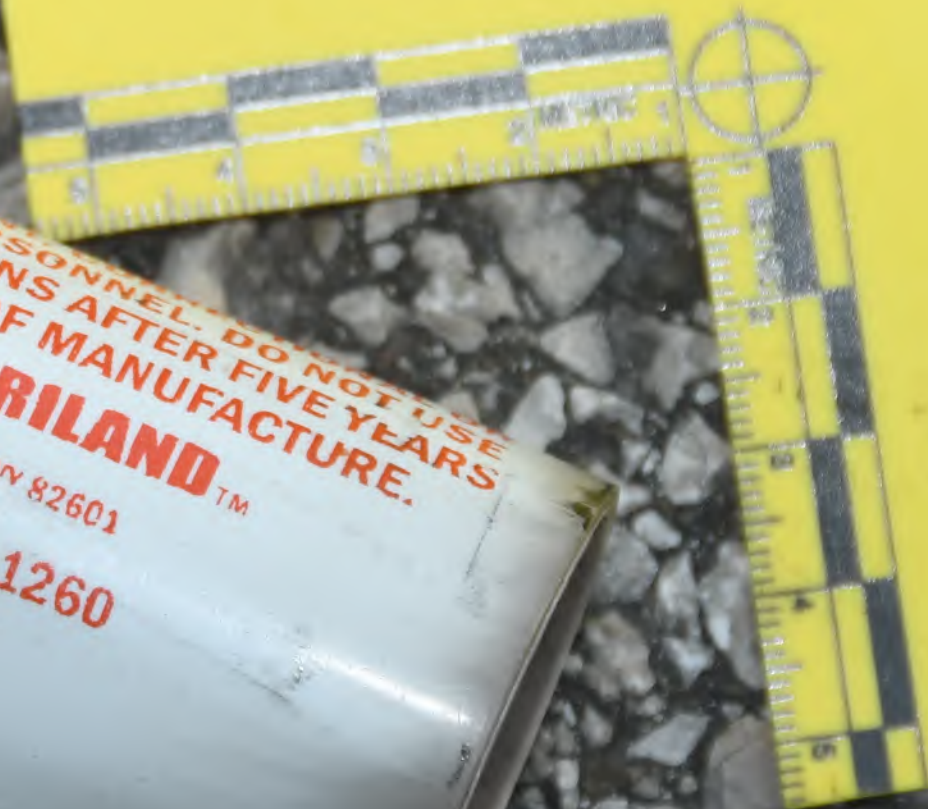
1

3

4

2

2

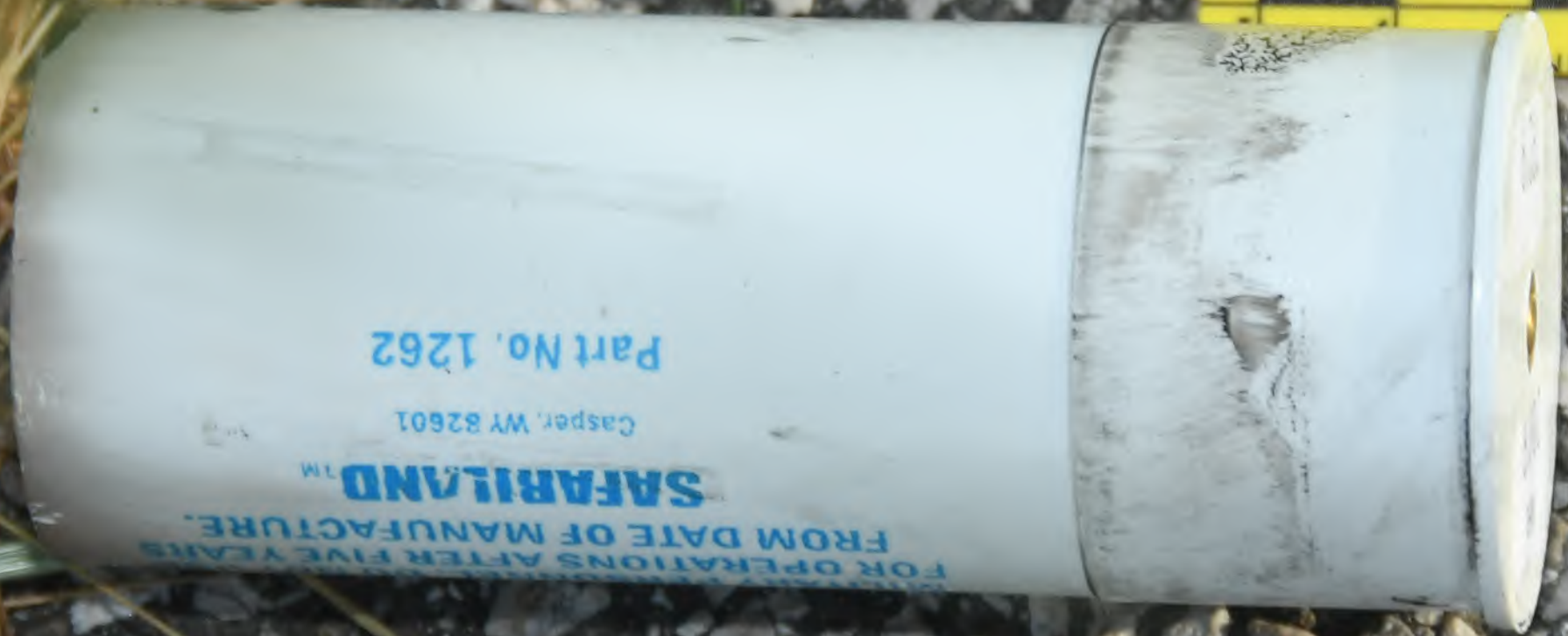


2



3

4



FOR OPERATIONS AFTER FIVE YEARS
FROM DATE OF MANUFACTURE.

SAFARI LAND™

Casper, WY 82601

Part No. 1262



METRIC

3

3



FOR OPERATIONS AFTER FIVE YEARS
FROM DATE OF MANUFACTURE.

SAFARI!LAND™

Casper, WY 82601

Part No. 1262

4



A black SWAT van with "SWAT" written on the side, parked on the left side of the road.

A silver pickup truck parked on the grass to the right of the road.

A silver SUV parked on the grass to the right of the road, partially cordoned off with yellow crime scene tape.

8

10

7

6

5

9

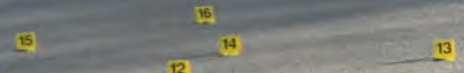
15

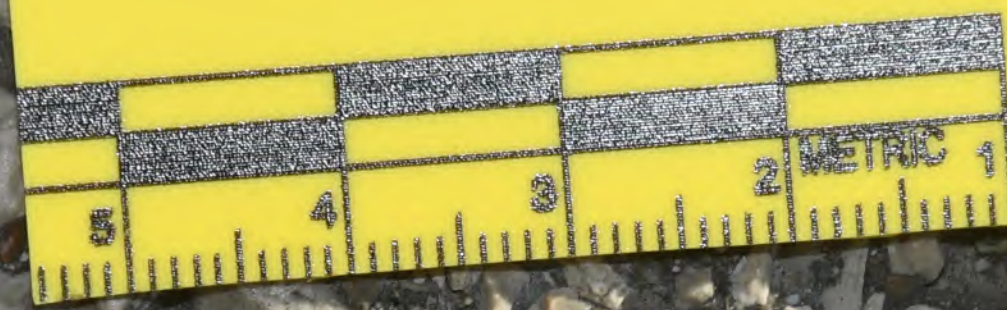
12

11

14

13





5





8

7

6

10

15

11

12

14

16

13



8



9

6



6

EVIDENCE MARKERS
TEL: 800-847-1000
U.S. Patent #5,810,888 & 5,727,018
www.evidence.com



6



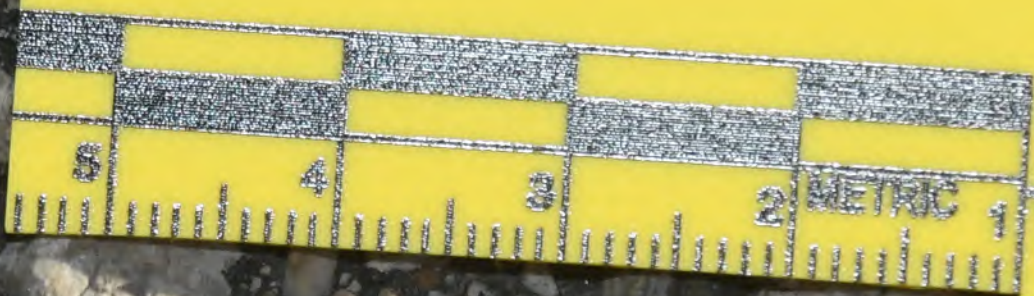
10

8

7







7



8

8

8





13

9

CRIME SCENE DO NOT ENTER

EVIDENCE







10

15

11

12

14

16

13



REGIONAL
LAKE COUNTY
SHERIFF'S OFFICE
S.W.A.T.
SHERIFF FRANK L. SCHUBERT

10

15

16

14

12

11

13





10

11

12

14

15

16

13