





R I E F F



SHERIFF

SHERIFF



SHERIFF



Columbia Gas

17
SHERIFF

CHRYSLER



SHERIFF

OHIO
12 63
SHERIFF

INGOD WE TRUST

UNIT



SHERIFF



CHARGER AWD

SHERIFF

OHIO
12 63
SHERIFF

IN GOD WE TRUST









Pro Guard

CAUTION

Pro Guard







CLARK COUNTY



CLARK COUNTY







YATES



YATES







#7



20 CENTERFIRE RIFLE CARTRIDGES
308 WINCHESTER
 WARNING: KEEP OUT OF REACH OF CHILDREN
 FML-BT 14761 30888

14761
 14761
 14761
308 WINCHESTER

WARNING TO AVOID POSSIBLE SERIOUS INJURY: (1) Use only in firearms in good operating condition. (2) Keep barrel free of obstruction. (3) Check all cartridges to ensure they are correct for use in your firearm. (4) If gun misfires, keep it pointed in a safe direction and wait 30 seconds before carefully unloading. (5) Wear eye and ear protection. (6) Since handloading practices are beyond our control, we disclaim all liability for damage or injury which may result from loading and use of reloaded cartridges.

LEAD WARNING Discharging firearms in poorly ventilated areas, cleaning firearms, or handling ammunition may result in exposure to lead, a substance known to cause cancer, birth defects, and reproductive harm, and other serious physical injuries. Use only with proper ventilation. Wash hands thoroughly after exposure.

PMC
 PMC AMMUNITION, INC.
 HOUSTON, TEXAS, USA
 WWW.PMCAMMUN.COM

LOT: 3088-0261

7 415690695128 8

7



Me pas prends cette precaution peut causer un accident.
bonne condition et l'attention pour les munitions modernes.
age dans le carton. Assurez-vous que la carabine est en
egaitez, qu'il n'y a pas de
A. 10
20 Car

RTEE DES ENFANTS
Made in Korea

308 WINCHESTER
147 Grain FMJ-BT

PMC AMMUNITION
Bronze

PMC

PMC
AMMUNITION

Bronze

WINCHESTER

20 CENTERFIRE RIFLE CARTRIDGE

308 WINCHESTER
WARNING: KEEP OUT OF REACH

308B
147 Gr.
FMJ-BT

308 WINCHESTER

308B
147 Gr.
FMJ-BT









CRIME SCENE DO NOT ENTER

CRIME SCENE DO NOT ENTER

1129





BE

ORC FORENSICS

SCENE

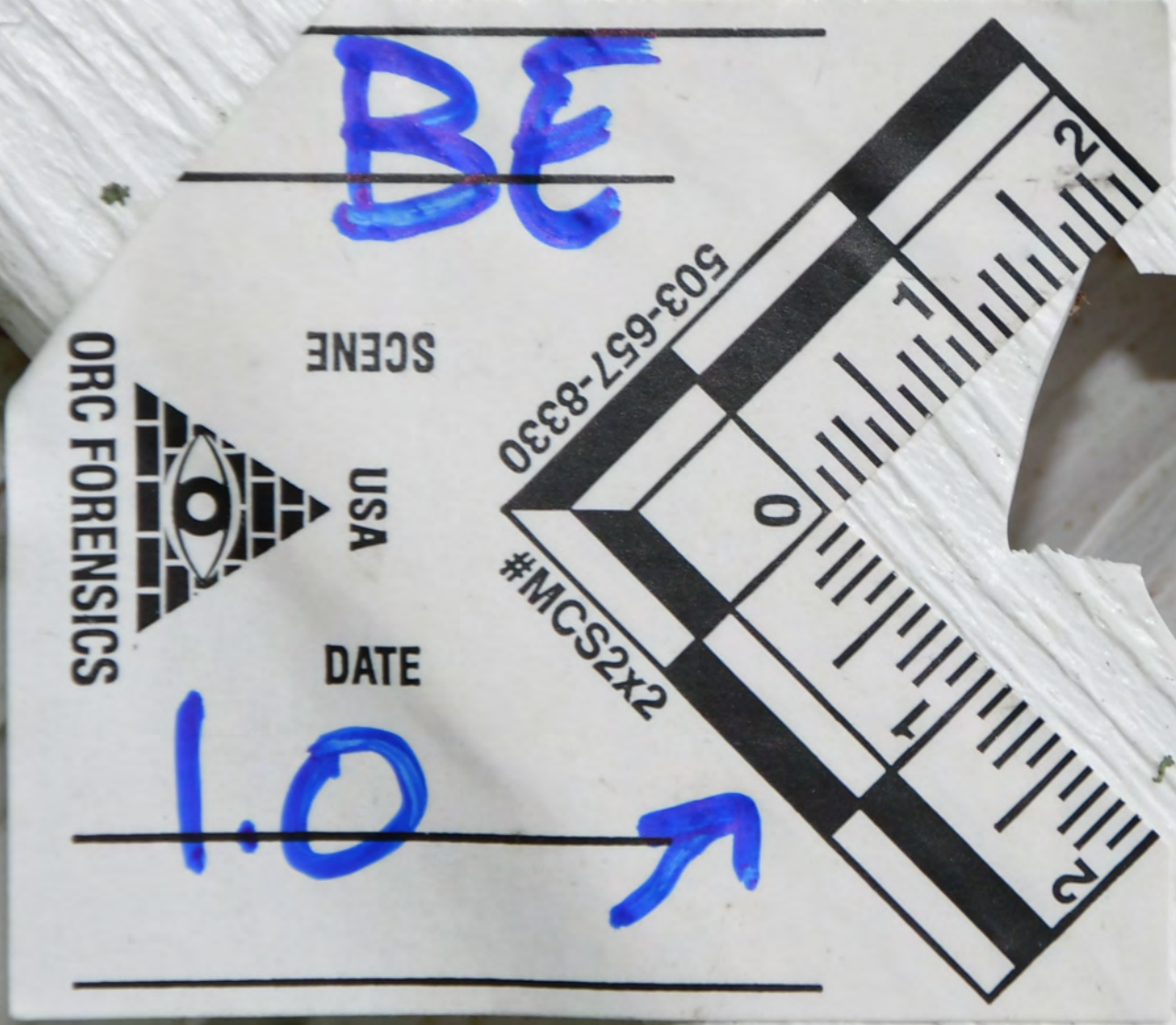
USA

DATE

503-657-8330

#MCS2x2

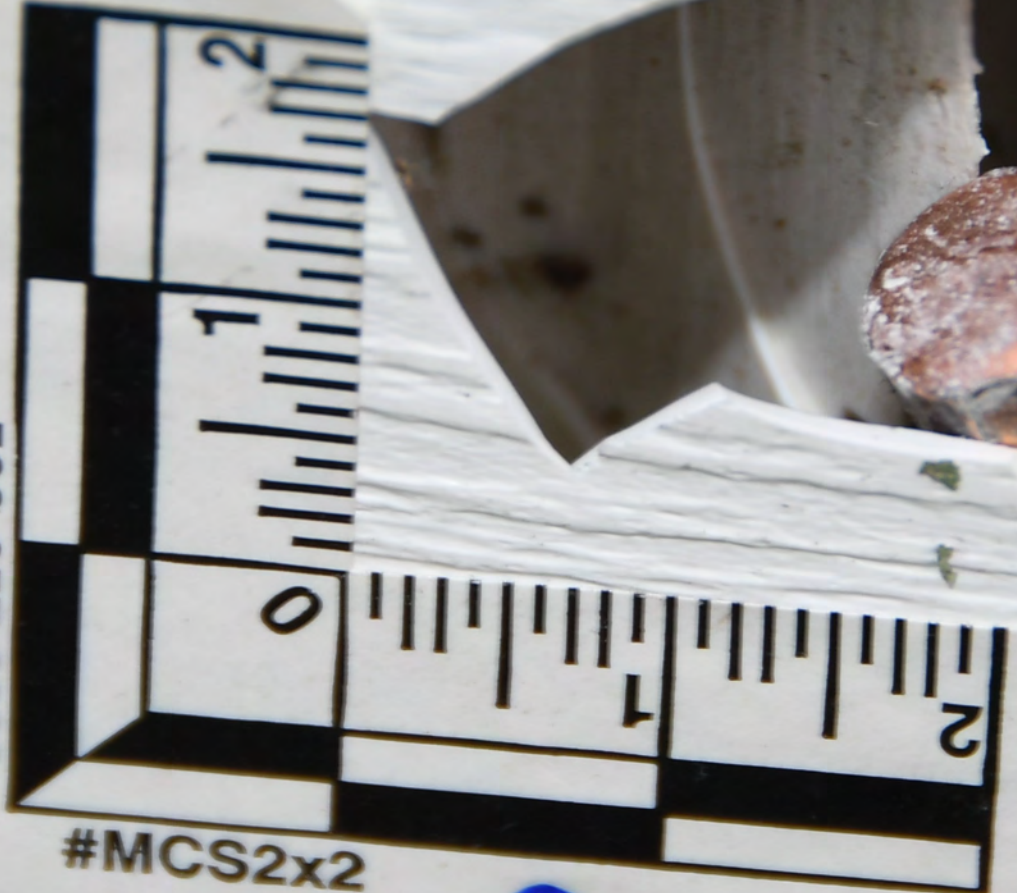
1.0



BE

SCENE

503-657-8330



#MCS2x2



USA

DATE

10



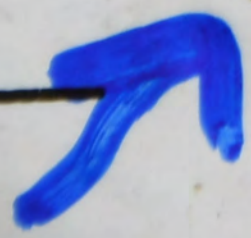
BE

SCENE

USA

DATE

1.0



ORC FORENSICS



503-657-8330

#MCS2x2

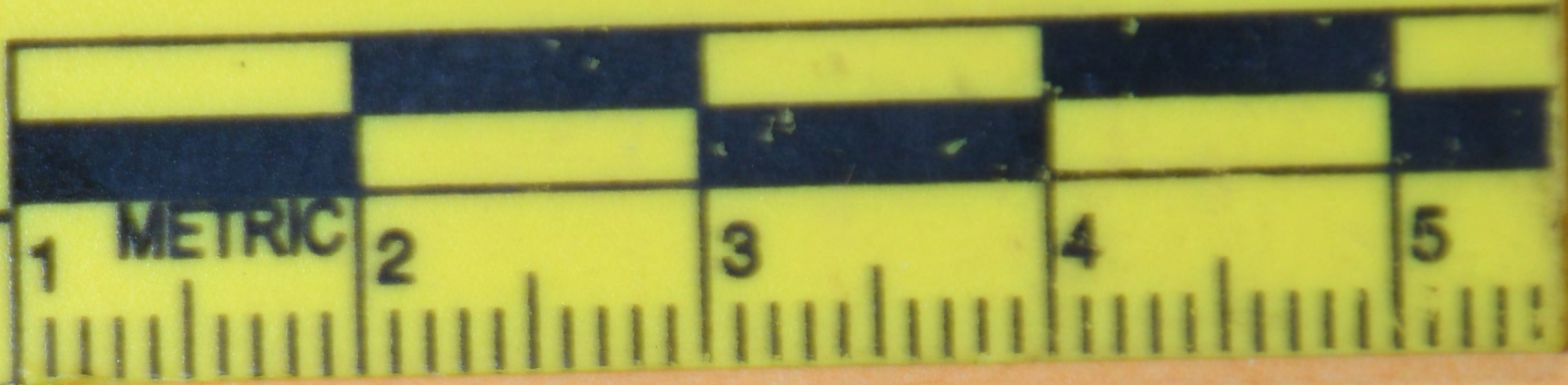


BE 1.0



91

9



BE 1.0



