



SETINA

POLICE

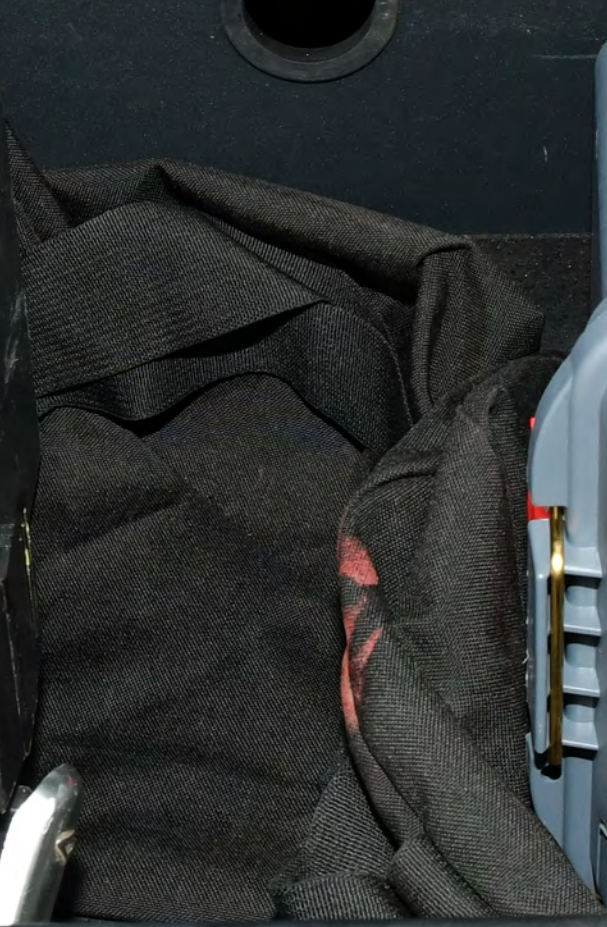
93







SETINA







EMERGENCY 911

CAUTION

CHEVROLET TAHOE

LT





OHIO
JLE 6871
OHIO

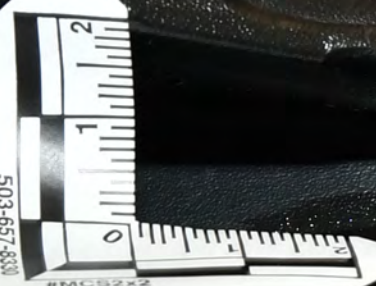
CHEVROLET



OHIO
JLE 6671
GUERNSEY

CHEVROLET

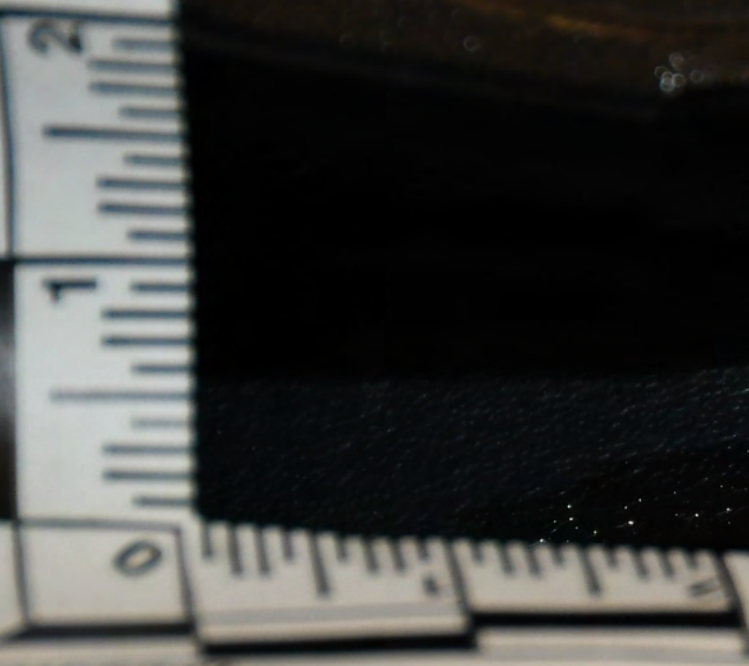
503-657-8383
#MCS272
DATE
B&B
INVESTIGATIVE
SERVICES





503-657-4331

503-657-4331



100%
100%
100%

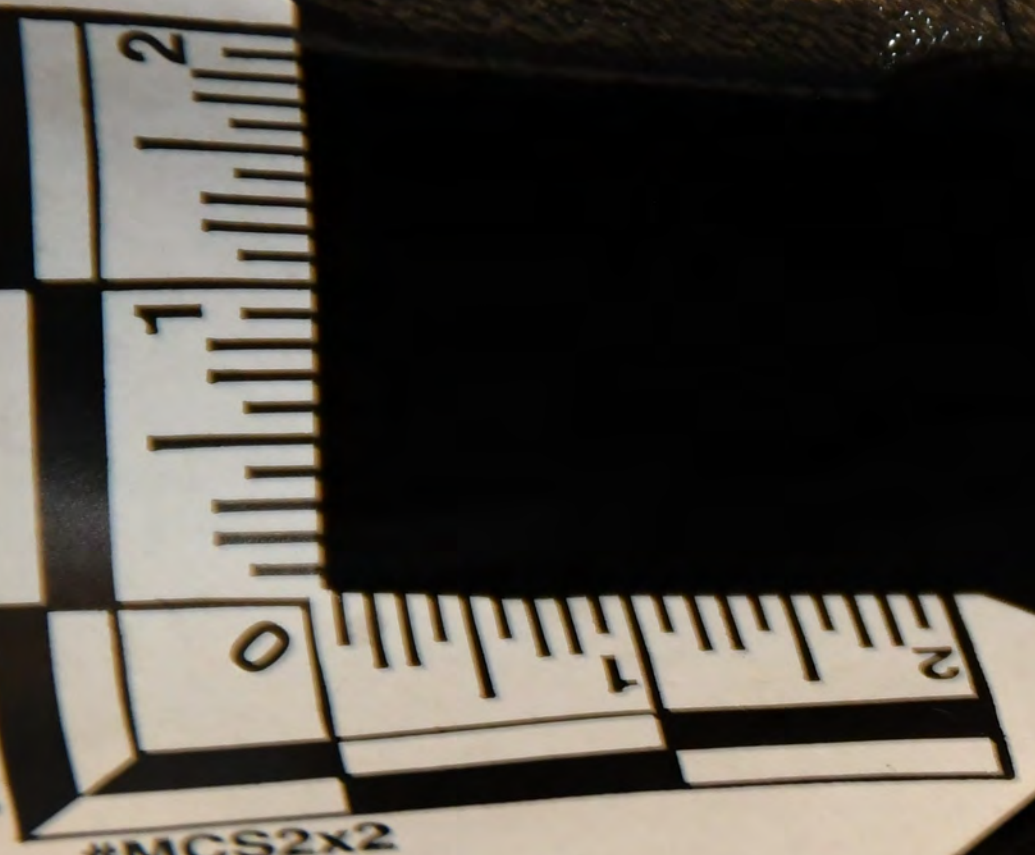


SCIENCE

USA

USA

503-657-8330



#MCS2x2

DATE

6/20/10



503-657-8331

2

1

0

503-657-8331

#NCR8331



ORC FORENSICS

503-657-8330

#MCS2x2

A white forensic evidence tag is placed on a dark, textured surface. The tag features a ruler at the bottom with markings from 0 to 2 inches. Above the ruler, the text 'ORC FORENSICS' is printed on the left, and '503-657-8330' and '#MCS2x2' are printed on the right. Handwritten in black ink are the letters '2c' and a small sketch of a rectangular object with a curved top edge. The tag is secured to the surface by a small metal fastener.



Wiring harness label with a ruler and text, including "Wiring" and "12V".

Wiring harness label with the text "MS380" and "12V".

FoMoCo
MS380





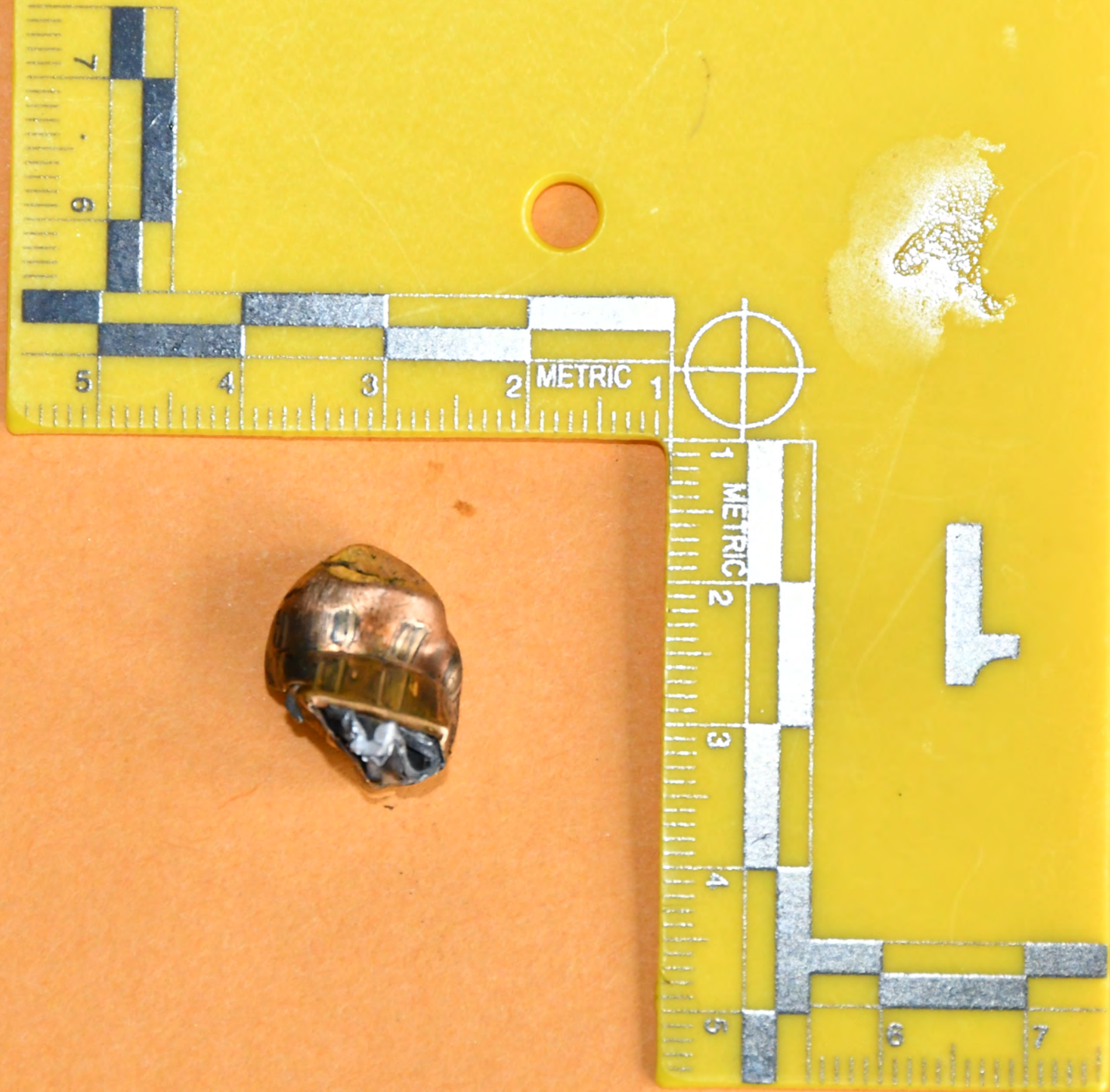
1

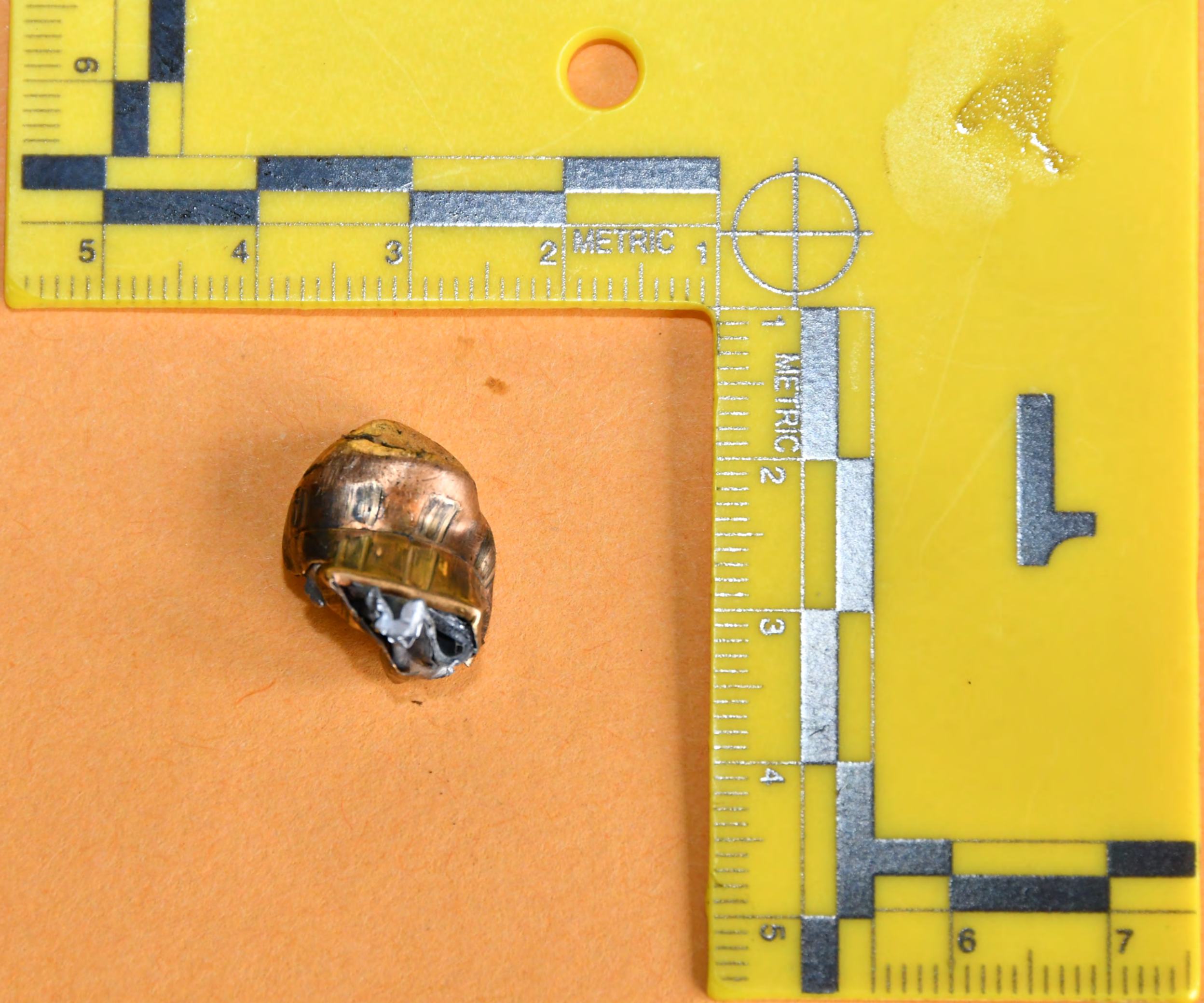
DANGER
SHIELD EYES FROM EXPLODING GASES
SEE OWNER'S MANUAL FOR DETAILS

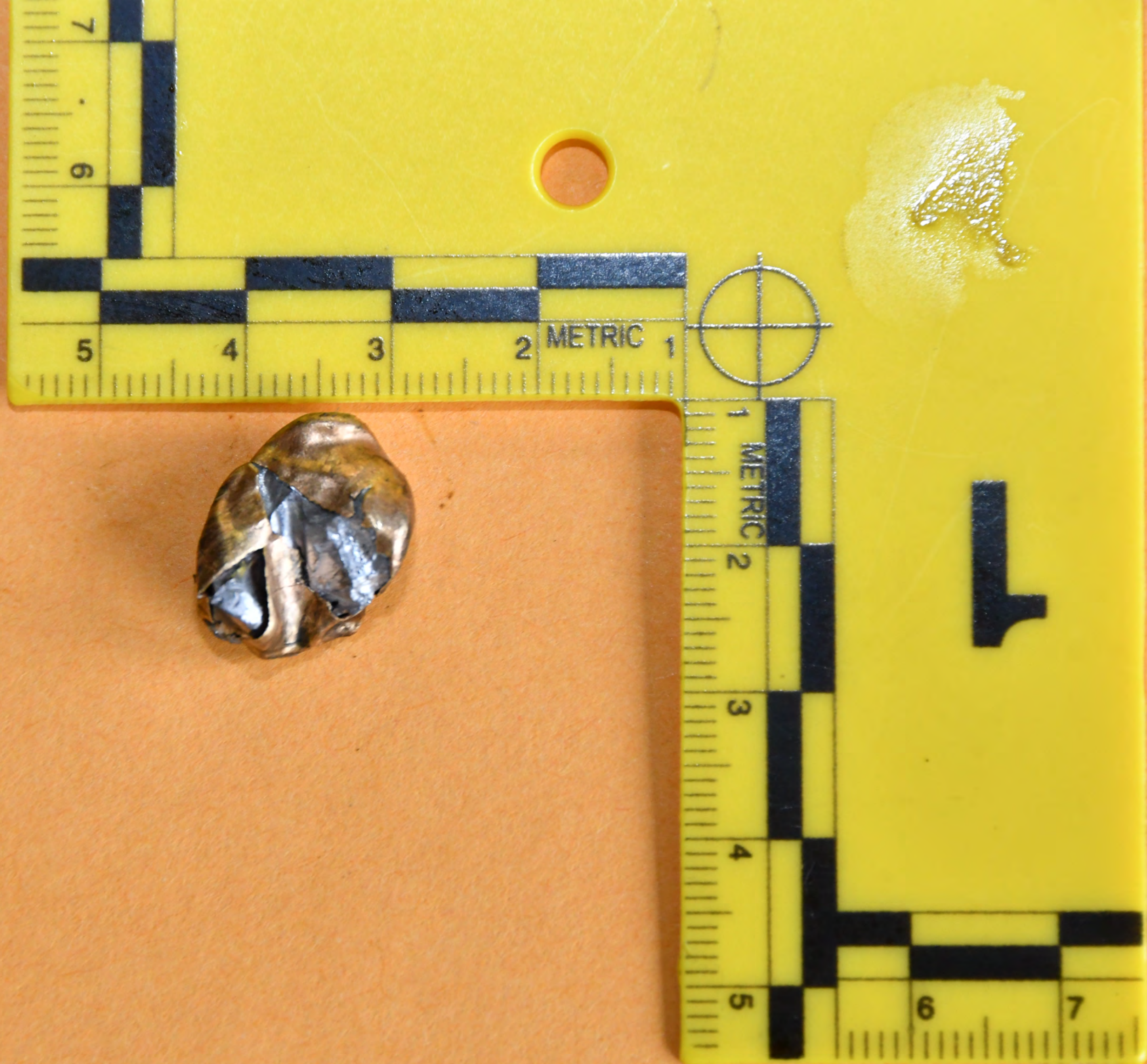
FOMOCO
MS380

MS380











0259

AA53-9A600-AD
AA53-9C675-AC
S768C
MADE IN U.S.A.
CAV. 2 OF 2
>PP-TD20, TEO<

FOMOCO



WARNING
CAUTION
WEIGHT CAPACITY
INCREASE





CAUTION K-9
POLICE
CITY OF CAMBRIDGE

WestBanco

CHEVROLET
TAHOE

White paper or cardboard placed on the ground under the damaged front of the vehicle.

504-657-8330 #MCS2-X2

SCENE USA DATE

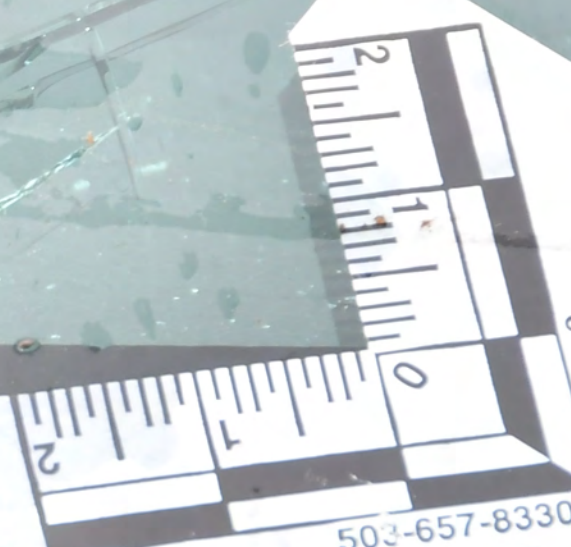
ORC FORENSICS

BENGO



EM1 1308979
FBI
A

INCHES
50-511-8-300
FBI
LABORATORY
DEPARTMENT OF JUSTICE
FEDERAL BUREAU OF INVESTIGATION



#MCS2X2

503-657-8330

USA
SCENE

EVIDENCE

ORC FORENSICS



