



Ohio Attorney General's Office
Bureau of Criminal Investigation
Investigative Report



2022-0001

Officer Involved Critical Incident - 2307 10th Street SW, Canton, Ohio

Investigative Activity: Receipt and Review of GPS Data
Activity Date: January 25, 2022
Activity Location: BCI - Richfield
Authoring Agent: SA Matthew Armstrong #146

Narrative:

On Tuesday, January 25, 2022, Ohio Bureau of Criminal Investigation (BCI) Special Agent (SA) Matthew Armstrong (Armstrong) received GPS records associated with Canton Police Department (CPD) Officer Robert Huber's police cruiser. SA Armstrong had requested the records for the 15 minutes prior to the January 1, 2022, officer-involved shooting in Canton, Ohio. The records were provided in an Excel document titled, *K9 Car 60*, by CPD Captain John Gabbard. The document has been saved as a .PDF file and attached to this report.

SA Armstrong reviewed the records and noted the following:

- The records contained 169 longitude and latitude coordinates. The first record was on 12/23/2021, at 2350 hours. The last record was on 01/01/2022, at 0021 hours.
- The time provided was to the nearest minute. This caused multiple location points to be recorded within the same minute.
- The location of the first record at 2350 hours was 714 12th St NW, Canton, Ohio (40.809343, -81.378476).
- The cruiser speed became zero near 2307 10th Street SW, Canton, Ohio (40.7927, -81.40026) on 01/01/2022, at 0006 hours.

SA Armstrong provided the records to BCI Criminal Intelligence Analyst Lauren Mshar (Mshar). Mshar plotted the GPS coordinates on a map, utilizing Google Earth Pro, and saved the map as a .kmz file titled, *Copy of K9 Car 60.csv.kmz*. It has been uploaded to Matrix.

SA Armstrong reviewed the .kmz file and obtained screenshots of the most relevant data points. They are included in the images below. For additional details, refer to the original GPS records provided by the Canton Police Department and the .kmz file titled, *Copy of K9 Car 60.csv.kmz*.

This document is the property of the Ohio Bureau of Criminal Investigation and is confidential in nature. Neither the document nor its contents are to be disseminated outside your agency except as provided by law - a statute, an administrative rule, or any rule of procedure.

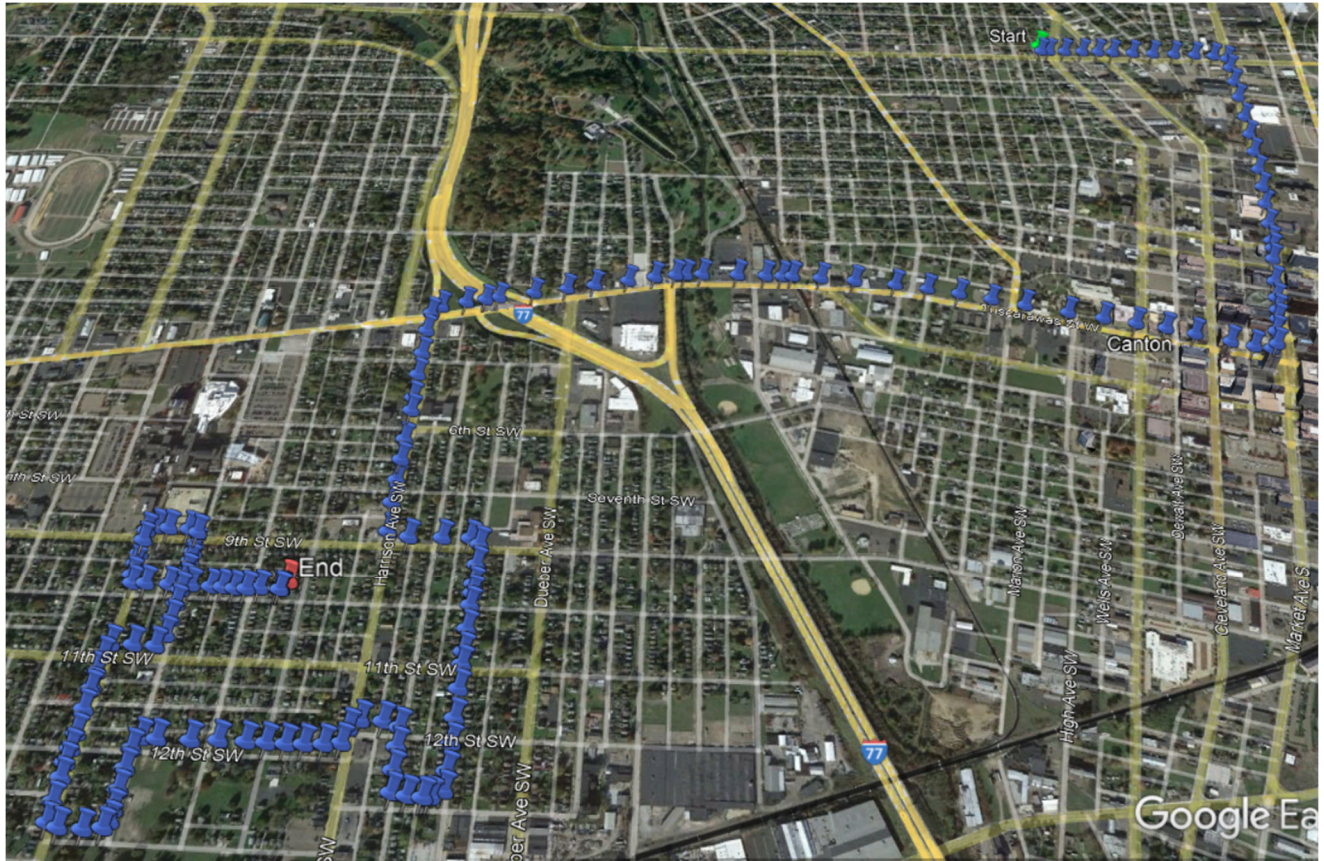


Ohio Attorney General's Office
Bureau of Criminal Investigation
Investigative Report



2022-0001

Officer Involved Critical Incident - 2307 10th Street SW, Canton, Ohio



Google Earth GPS Plotting Image 1

This document is the property of the Ohio Bureau of Criminal Investigation and is confidential in nature. Neither the document nor its contents are to be disseminated outside your agency except as provided by law - a statute, an administrative rule, or any rule of procedure.

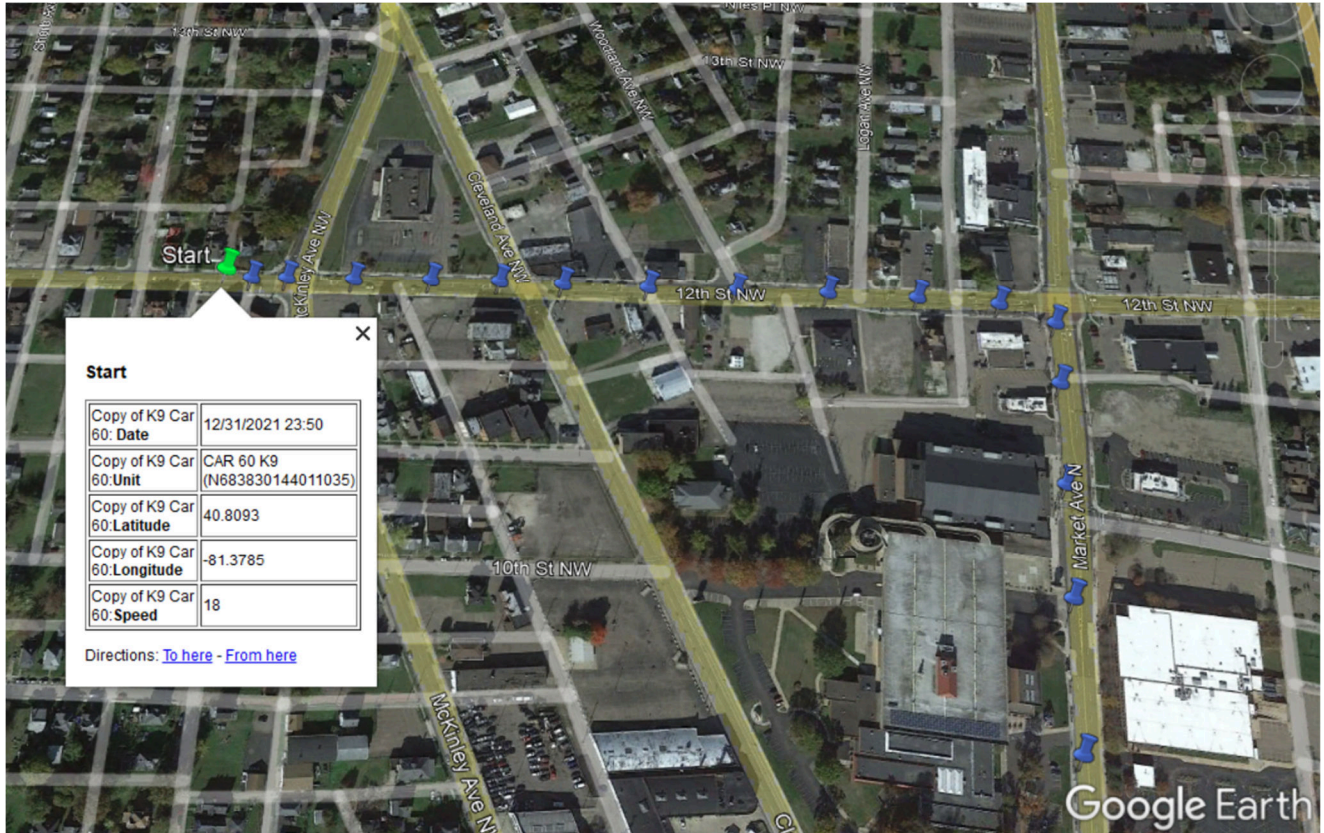


Ohio Attorney General's Office
Bureau of Criminal Investigation
 Investigative Report



2022-0001

Officer Involved Critical Incident - 2307 10th Street SW, Canton, Ohio



Google Earth GPS Plotting Image 2

This document is the property of the Ohio Bureau of Criminal Investigation and is confidential in nature. Neither the document nor its contents are to be disseminated outside your agency except as provided by law - a statute, an administrative rule, or any rule of procedure.

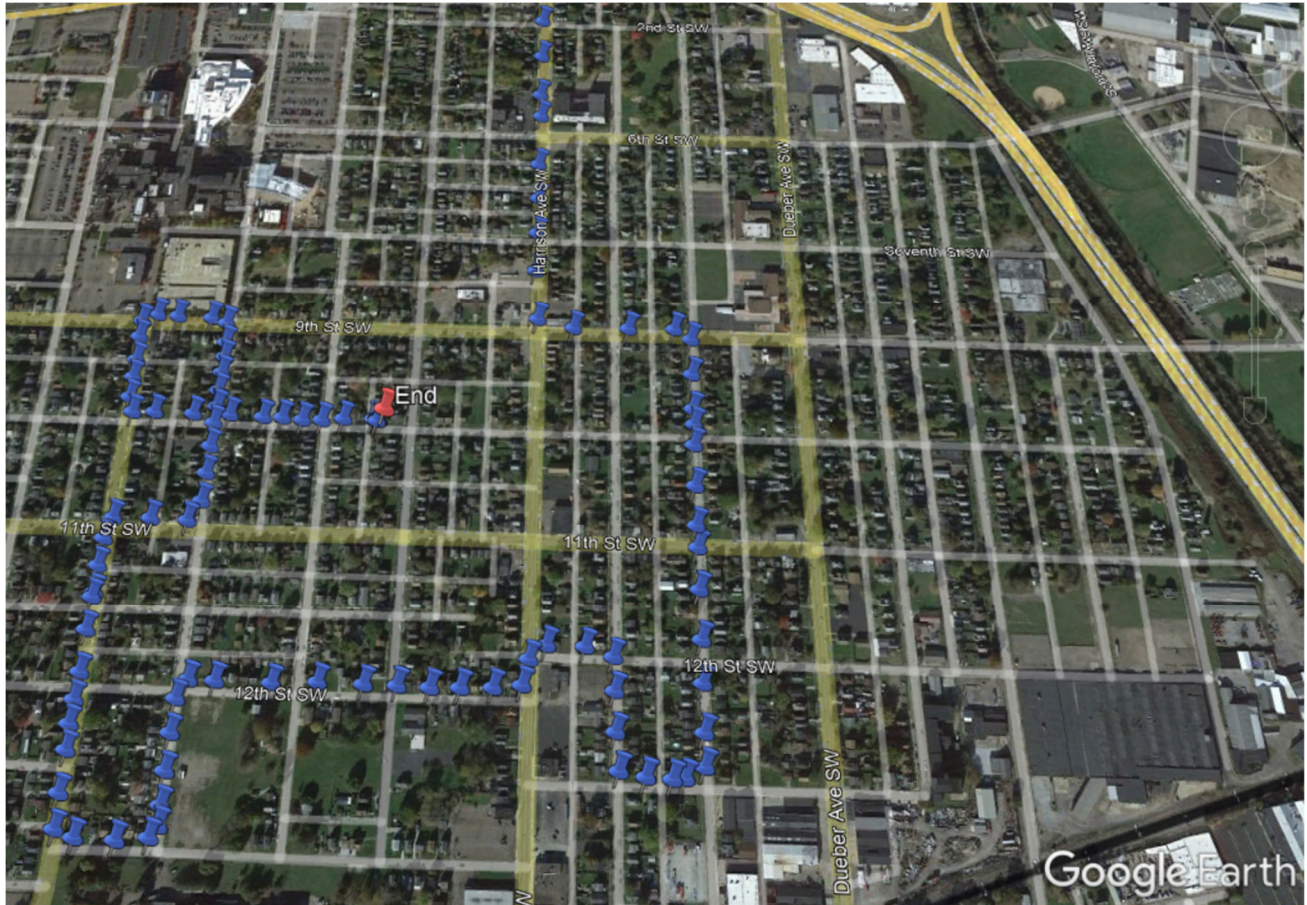


Ohio Attorney General's Office
Bureau of Criminal Investigation
Investigative Report



2022-0001

Officer Involved Critical Incident - 2307 10th Street SW, Canton, Ohio



Google Earth GPS Plotting Image 3

This document is the property of the Ohio Bureau of Criminal Investigation and is confidential in nature. Neither the document nor its contents are to be disseminated outside your agency except as provided by law - a statute, an administrative rule, or any rule of procedure.

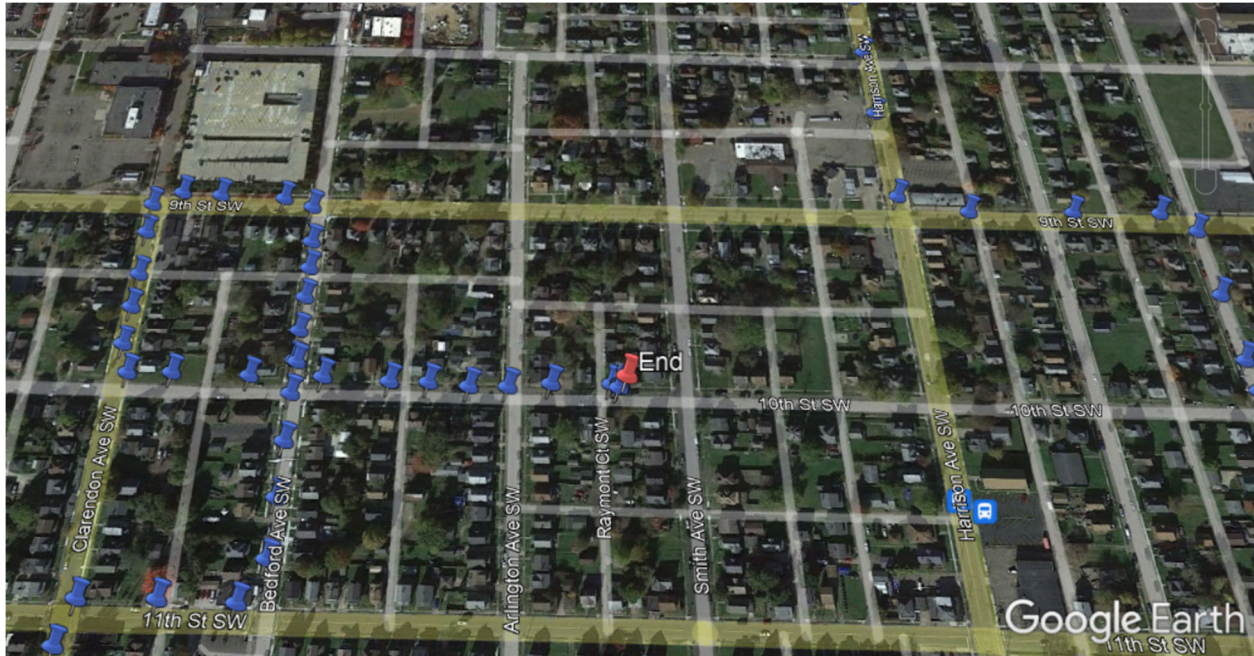


Ohio Attorney General's Office
Bureau of Criminal Investigation
 Investigative Report

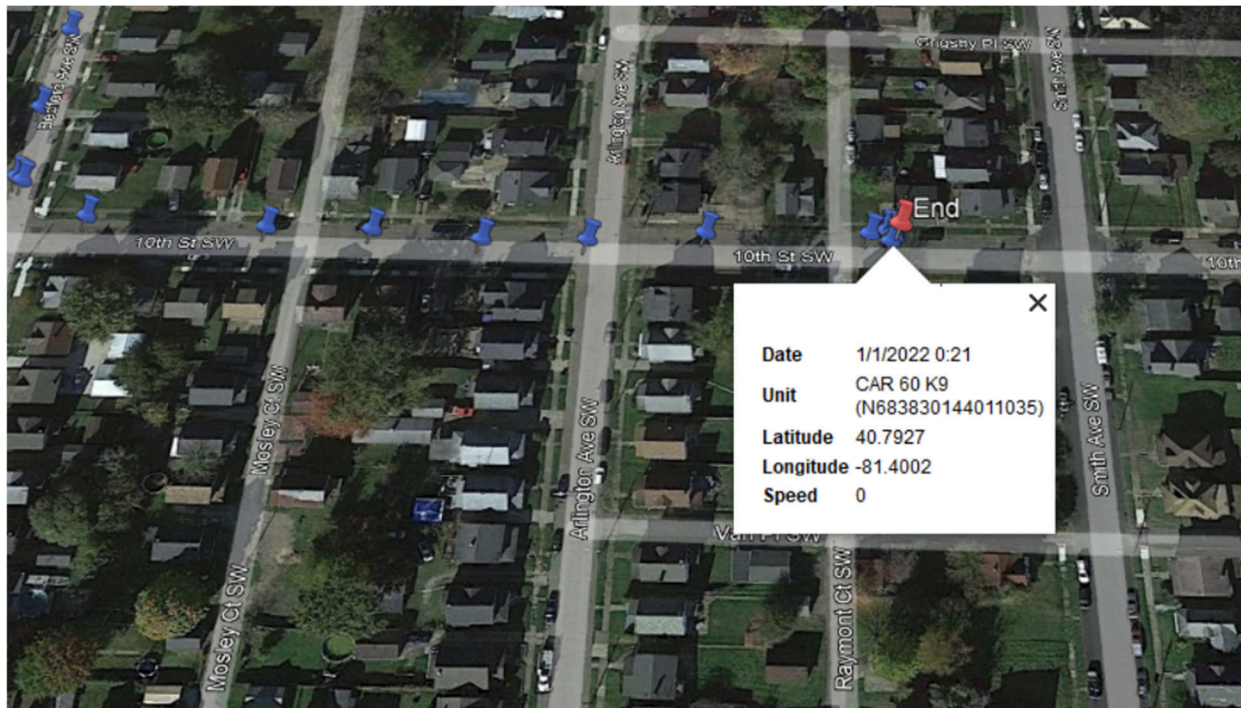


2022-0001

Officer Involved Critical Incident - 2307 10th Street SW, Canton, Ohio



Google Earth GPS Plotting Image 4



Google Earth GPS Plotting Image 5

This document is the property of the Ohio Bureau of Criminal Investigation and is confidential in nature. Neither the document nor its contents are to be disseminated outside your agency except as provided by law - a statute, an administrative rule, or any rule of procedure.



Ohio Attorney General's Office
Bureau of Criminal Investigation
Investigative Report



2022-0001

Officer Involved Critical Incident - 2307 10th Street SW, Canton, Ohio

Attachments:

- Copy of K9 Car 60 GPS Data
- Google Earth GPS Plotting Image 1
- Google Earth GPS Plotting Image 2
- Google Earth GPS Plotting Image 3
- Google Earth GPS Plotting Image 4
- Google Earth GPS Plotting Image 5

This document is the property of the Ohio Bureau of Criminal Investigation and is confidential in nature. Neither the document nor its contents are to be disseminated outside your agency except as provided by law - a statute, an administrative rule, or any rule of procedure.

Date	Unit	Latitude	Longitude	Speed
12/31/2021 23:50	CAR 60 K9 (N683830144011035)	40.809343	-81.378476	18
12/31/2021 23:50	CAR 60 K9 (N683830144011035)	40.809341	-81.378232	18
12/31/2021 23:50	CAR 60 K9 (N683830144011035)	40.809339	-81.377957	7
12/31/2021 23:50	CAR 60 K9 (N683830144011035)	40.809324	-81.377438	16
12/31/2021 23:50	CAR 60 K9 (N683830144011035)	40.809315	-81.376839	23
12/31/2021 23:50	CAR 60 K9 (N683830144011035)	40.809301	-81.376305	21
12/31/2021 23:50	CAR 60 K9 (N683830144011035)	40.809278	-81.375814	17
12/31/2021 23:50	CAR 60 K9 (N683830144011035)	40.809248	-81.375154	19
12/31/2021 23:50	CAR 60 K9 (N683830144011035)	40.809222	-81.374475	24
12/31/2021 23:50	CAR 60 K9 (N683830144011035)	40.8092	-81.373767	26
12/31/2021 23:50	CAR 60 K9 (N683830144011035)	40.809162	-81.373082	26
12/31/2021 23:50	CAR 60 K9 (N683830144011035)	40.809113	-81.372462	24
12/31/2021 23:51	CAR 60 K9 (N683830144011035)	40.80898	-81.37206	14
12/31/2021 23:51	CAR 60 K9 (N683830144011035)	40.808587	-81.372121	17
12/31/2021 23:51	CAR 60 K9 (N683830144011035)	40.807965	-81.372233	31
12/31/2021 23:51	CAR 60 K9 (N683830144011035)	40.807311	-81.372346	31
12/31/2021 23:51	CAR 60 K9 (N683830144011035)	40.806499	-81.372489	31
12/31/2021 23:51	CAR 60 K9 (N683830144011035)	40.805796	-81.372615	34
12/31/2021 23:51	CAR 60 K9 (N683830144011035)	40.805113	-81.372759	34
12/31/2021 23:51	CAR 60 K9 (N683830144011035)	40.804443	-81.372893	34
12/31/2021 23:51	CAR 60 K9 (N683830144011035)	40.803806	-81.373046	32
12/31/2021 23:51	CAR 60 K9 (N683830144011035)	40.803192	-81.373214	32
12/31/2021 23:51	CAR 60 K9 (N683830144011035)	40.802495	-81.373409	29
12/31/2021 23:52	CAR 60 K9 (N683830144011035)	40.801927	-81.373578	29
12/31/2021 23:52	CAR 60 K9 (N683830144011035)	40.80168	-81.37364	29
12/31/2021 23:52	CAR 60 K9 (N683830144011035)	40.801331	-81.373781	31

12/31/2021 23:52	CAR 60 K9 (N683830144011035)	40.800613	-81.374041	31
12/31/2021 23:52	CAR 60 K9 (N683830144011035)	40.800071	-81.37423	29
12/31/2021 23:52	CAR 60 K9 (N683830144011035)	40.799703	-81.374355	23
12/31/2021 23:52	CAR 60 K9 (N683830144011035)	40.799424	-81.374465	14
12/31/2021 23:52	CAR 60 K9 (N683830144011035)	40.799071	-81.374664	17
12/31/2021 23:52	CAR 60 K9 (N683830144011035)	40.798709	-81.37478	17
12/31/2021 23:52	CAR 60 K9 (N683830144011035)	40.798575	-81.374983	7
12/31/2021 23:52	CAR 60 K9 (N683830144011035)	40.798633	-81.375427	11
12/31/2021 23:52	CAR 60 K9 (N683830144011035)	40.798775	-81.376006	19
12/31/2021 23:53	CAR 60 K9 (N683830144011035)	40.798994	-81.376882	26
12/31/2021 23:53	CAR 60 K9 (N683830144011035)	40.799158	-81.377617	29
12/31/2021 23:53	CAR 60 K9 (N683830144011035)	40.799301	-81.378379	27
12/31/2021 23:53	CAR 60 K9 (N683830144011035)	40.799454	-81.379226	31
12/31/2021 23:53	CAR 60 K9 (N683830144011035)	40.799621	-81.380142	34
12/31/2021 23:53	CAR 60 K9 (N683830144011035)	40.799841	-81.381272	37
12/31/2021 23:53	CAR 60 K9 (N683830144011035)	40.800021	-81.382158	34
12/31/2021 23:53	CAR 60 K9 (N683830144011035)	40.8002	-81.383019	32
12/31/2021 23:53	CAR 60 K9 (N683830144011035)	40.800359	-81.383878	32
12/31/2021 23:53	CAR 60 K9 (N683830144011035)	40.8005	-81.384749	32
12/31/2021 23:53	CAR 60 K9 (N683830144011035)	40.800629	-81.385872	34
12/31/2021 23:53	CAR 60 K9 (N683830144011035)	40.800714	-81.386818	37
12/31/2021 23:54	CAR 60 K9 (N683830144011035)	40.800772	-81.387613	31
12/31/2021 23:54	CAR 60 K9 (N683830144011035)	40.80077	-81.3879	27
12/31/2021 23:54	CAR 60 K9 (N683830144011035)	40.800788	-81.388367	27
12/31/2021 23:54	CAR 60 K9 (N683830144011035)	40.800814	-81.38916	30
12/31/2021 23:54	CAR 60 K9 (N683830144011035)	40.800834	-81.39016	30
12/31/2021 23:54	CAR 60 K9 (N683830144011035)	40.800816	-81.39063	26

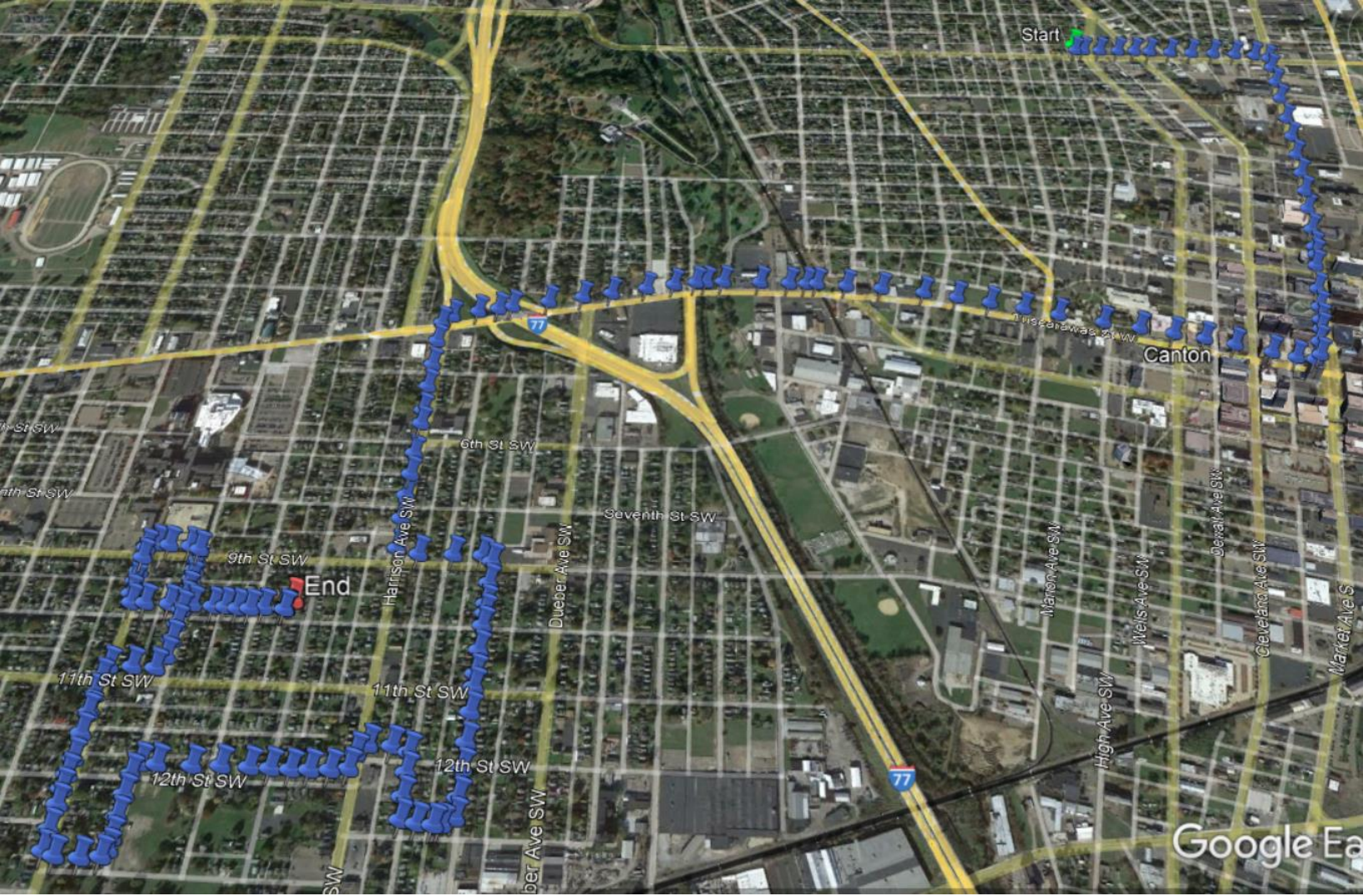
12/31/2021 23:54	CAR 60 K9 (N683830144011035)	40.800809	-81.390906	14
12/31/2021 23:54	CAR 60 K9 (N683830144011035)	40.800747	-81.391501	24
12/31/2021 23:54	CAR 60 K9 (N683830144011035)	40.800631	-81.392252	30
12/31/2021 23:54	CAR 60 K9 (N683830144011035)	40.800484	-81.393196	30
12/31/2021 23:54	CAR 60 K9 (N683830144011035)	40.800366	-81.393967	27
12/31/2021 23:54	CAR 60 K9 (N683830144011035)	40.800233	-81.394878	31
12/31/2021 23:55	CAR 60 K9 (N683830144011035)	40.800087	-81.395848	37
12/31/2021 23:55	CAR 60 K9 (N683830144011035)	40.80002	-81.39621	37
12/31/2021 23:55	CAR 60 K9 (N683830144011035)	40.799942	-81.39674	33
12/31/2021 23:55	CAR 60 K9 (N683830144011035)	40.799806	-81.397417	23
12/31/2021 23:55	CAR 60 K9 (N683830144011035)	40.799606	-81.397679	9
12/31/2021 23:55	CAR 60 K9 (N683830144011035)	40.799094	-81.397732	22
12/31/2021 23:55	CAR 60 K9 (N683830144011035)	40.798443	-81.397767	31
12/31/2021 23:55	CAR 60 K9 (N683830144011035)	40.797852	-81.397801	27
12/31/2021 23:56	CAR 60 K9 (N683830144011035)	40.797225	-81.39784	25
12/31/2021 23:56	CAR 60 K9 (N683830144011035)	40.79689	-81.39784	25
12/31/2021 23:56	CAR 60 K9 (N683830144011035)	40.796152	-81.397903	26
12/31/2021 23:56	CAR 60 K9 (N683830144011035)	40.79565	-81.397918	26
12/31/2021 23:56	CAR 60 K9 (N683830144011035)	40.795154	-81.397951	26
12/31/2021 23:56	CAR 60 K9 (N683830144011035)	40.794628	-81.397986	26
12/31/2021 23:56	CAR 60 K9 (N683830144011035)	40.793968	-81.397976	29
12/31/2021 23:56	CAR 60 K9 (N683830144011035)	40.793845	-81.397461	18
12/31/2021 23:56	CAR 60 K9 (N683830144011035)	40.793828	-81.396665	27
12/31/2021 23:56	CAR 60 K9 (N683830144011035)	40.793815	-81.396002	24
12/31/2021 23:56	CAR 60 K9 (N683830144011035)	40.793682	-81.395774	9
12/31/2021 23:56	CAR 60 K9 (N683830144011035)	40.793237	-81.395803	18
12/31/2021 23:57	CAR 60 K9 (N683830144011035)	40.792808	-81.39583	21

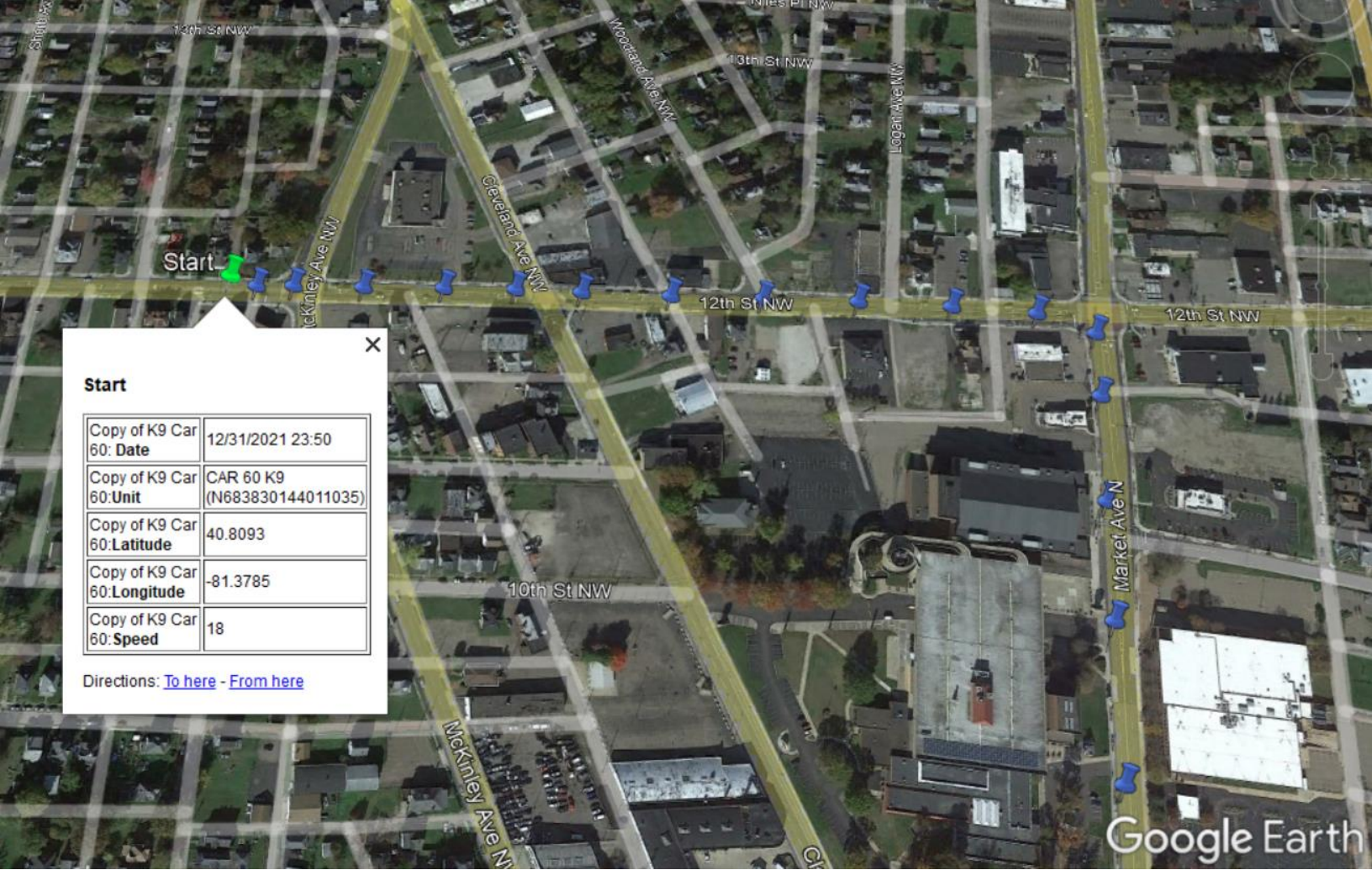
12/31/2021 23:57	CAR 60 K9 (N683830144011035)	40.79262	-81.39583	21
12/31/2021 23:57	CAR 60 K9 (N683830144011035)	40.792373	-81.395857	21
12/31/2021 23:57	CAR 60 K9 (N683830144011035)	40.791896	-81.395885	23
12/31/2021 23:57	CAR 60 K9 (N683830144011035)	40.791446	-81.395914	19
12/31/2021 23:57	CAR 60 K9 (N683830144011035)	40.791201	-81.395917	12
12/31/2021 23:57	CAR 60 K9 (N683830144011035)	40.790744	-81.395941	23
12/31/2021 23:57	CAR 60 K9 (N683830144011035)	40.790207	-81.395966	23
12/31/2021 23:57	CAR 60 K9 (N683830144011035)	40.789764	-81.395995	21
12/31/2021 23:57	CAR 60 K9 (N683830144011035)	40.789278	-81.396024	24
12/31/2021 23:57	CAR 60 K9 (N683830144011035)	40.788948	-81.396051	21
12/31/2021 23:58	CAR 60 K9 (N683830144011035)	40.788847	-81.396307	10
12/31/2021 23:58	CAR 60 K9 (N683830144011035)	40.78884	-81.39646	14
12/31/2021 23:58	CAR 60 K9 (N683830144011035)	40.788864	-81.396786	17
12/31/2021 23:58	CAR 60 K9 (N683830144011035)	40.788921	-81.397115	18
12/31/2021 23:58	CAR 60 K9 (N683830144011035)	40.789295	-81.397131	9
12/31/2021 23:58	CAR 60 K9 (N683830144011035)	40.789698	-81.397119	19
12/31/2021 23:58	CAR 60 K9 (N683830144011035)	40.79004	-81.397115	14
12/31/2021 23:58	CAR 60 K9 (N683830144011035)	40.790148	-81.397473	18
12/31/2021 23:58	CAR 60 K9 (N683830144011035)	40.790169	-81.397967	16
12/31/2021 23:58	CAR 60 K9 (N683830144011035)	40.790027	-81.398198	11
12/31/2021 23:58	CAR 60 K9 (N683830144011035)	40.789763	-81.398292	11
12/31/2021 23:58	CAR 60 K9 (N683830144011035)	40.789743	-81.39866	16
12/31/2021 23:59	CAR 60 K9 (N683830144011035)	40.789745	-81.399074	16
12/31/2021 23:59	CAR 60 K9 (N683830144011035)	40.78975	-81.39946	16
12/31/2021 23:59	CAR 60 K9 (N683830144011035)	40.789772	-81.399875	11
12/31/2021 23:59	CAR 60 K9 (N683830144011035)	40.78979	-81.400303	15
12/31/2021 23:59	CAR 60 K9 (N683830144011035)	40.789815	-81.400885	22

12/31/2021 23:59	CAR 60 K9 (N683830144011035)	40.789811	-81.40147	22
12/31/2021 23:59	CAR 60 K9 (N683830144011035)	40.78984	-81.402192	22
12/31/2021 23:59	CAR 60 K9 (N683830144011035)	40.789856	-81.40253	19
12/31/2021 23:59	CAR 60 K9 (N683830144011035)	40.789669	-81.402664	7
12/31/2021 23:59	CAR 60 K9 (N683830144011035)	40.789333	-81.402689	15
12/31/2021 23:59	CAR 60 K9 (N683830144011035)	40.78897	-81.402704	15
1/1/2022 0:00	CAR 60 K9 (N683830144011035)	40.788649	-81.402713	15
1/1/2022 0:00	CAR 60 K9 (N683830144011035)	40.78846	-81.40272	15
1/1/2022 0:00	CAR 60 K9 (N683830144011035)	40.788355	-81.402814	12
1/1/2022 0:00	CAR 60 K9 (N683830144011035)	40.788334	-81.403215	18
1/1/2022 0:00	CAR 60 K9 (N683830144011035)	40.788362	-81.403721	18
1/1/2022 0:00	CAR 60 K9 (N683830144011035)	40.78844	-81.403966	7
1/1/2022 0:00	CAR 60 K9 (N683830144011035)	40.788774	-81.403971	18
1/1/2022 0:00	CAR 60 K9 (N683830144011035)	40.789179	-81.403959	18
1/1/2022 0:00	CAR 60 K9 (N683830144011035)	40.789431	-81.403965	16
1/1/2022 0:00	CAR 60 K9 (N683830144011035)	40.78967	-81.403945	14
1/1/2022 0:00	CAR 60 K9 (N683830144011035)	40.789944	-81.40392	14
1/1/2022 0:00	CAR 60 K9 (N683830144011035)	40.790378	-81.403915	18
1/1/2022 0:01	CAR 60 K9 (N683830144011035)	40.790729	-81.403901	16
1/1/2022 0:01	CAR 60 K9 (N683830144011035)	40.79078	-81.40388	16
1/1/2022 0:01	CAR 60 K9 (N683830144011035)	40.791071	-81.403879	16
1/1/2022 0:01	CAR 60 K9 (N683830144011035)	40.791368	-81.40385	12
1/1/2022 0:01	CAR 60 K9 (N683830144011035)	40.791596	-81.403762	6
1/1/2022 0:01	CAR 60 K9 (N683830144011035)	40.791586	-81.403257	17
1/1/2022 0:01	CAR 60 K9 (N683830144011035)	40.791559	-81.402759	22
1/1/2022 0:01	CAR 60 K9 (N683830144011035)	40.791776	-81.402597	10
1/1/2022 0:01	CAR 60 K9 (N683830144011035)	40.7921	-81.402571	16

1/1/2022 0:01	CAR 60 K9 (N683830144011035)	40.792415	-81.402551	16
1/1/2022 0:02	CAR 60 K9 (N683830144011035)	40.792696	-81.402536	11
1/1/2022 0:02	CAR 60 K9 (N683830144011035)	40.792808	-81.402834	16
1/1/2022 0:02	CAR 60 K9 (N683830144011035)	40.792835	-81.403379	18
1/1/2022 0:02	CAR 60 K9 (N683830144011035)	40.792839	-81.403689	12
1/1/2022 0:02	CAR 60 K9 (N683830144011035)	40.793021	-81.403757	7
1/1/2022 0:02	CAR 60 K9 (N683830144011035)	40.793268	-81.403746	11
1/1/2022 0:02	CAR 60 K9 (N683830144011035)	40.793489	-81.403732	9
1/1/2022 0:02	CAR 60 K9 (N683830144011035)	40.793784	-81.403732	11
1/1/2022 0:02	CAR 60 K9 (N683830144011035)	40.793988	-81.403723	3
1/1/2022 0:02	CAR 60 K9 (N683830144011035)	40.794072	-81.403503	10
1/1/2022 0:02	CAR 60 K9 (N683830144011035)	40.794048	-81.403206	7
1/1/2022 0:02	CAR 60 K9 (N683830144011035)	40.794018	-81.402713	21
1/1/2022 0:03	CAR 60 K9 (N683830144011035)	40.79395	-81.40249	7
1/1/2022 0:03	CAR 60 K9 (N683830144011035)	40.793697	-81.402476	11
1/1/2022 0:03	CAR 60 K9 (N683830144011035)	40.793512	-81.402477	0
1/1/2022 0:03	CAR 60 K9 (N683830144011035)	40.793314	-81.402491	7
1/1/2022 0:03	CAR 60 K9 (N683830144011035)	40.79309	-81.402514	7
1/1/2022 0:03	CAR 60 K9 (N683830144011035)	40.7929	-81.402527	3
1/1/2022 0:04	CAR 60 K9 (N683830144011035)	40.79289	-81.40251	0
1/1/2022 0:04	CAR 60 K9 (N683830144011035)	40.792794	-81.40232	9
1/1/2022 0:04	CAR 60 K9 (N683830144011035)	40.792759	-81.401853	15
1/1/2022 0:04	CAR 60 K9 (N683830144011035)	40.79275	-81.401582	10
1/1/2022 0:04	CAR 60 K9 (N683830144011035)	40.792721	-81.401301	7
1/1/2022 0:05	CAR 60 K9 (N683830144011035)	40.792715	-81.401031	4
1/1/2022 0:05	CAR 60 K9 (N683830144011035)	40.79273	-81.40073	4
1/1/2022 0:05	CAR 60 K9 (N683830144011035)	40.792721	-81.400311	12

1/1/2022 0:06	CAR 60 K9 (N683830144011035)	40.7927	-81.40026	0
1/1/2022 0:08	CAR 60 K9 (N683830144011035)	40.79271	-81.40025	0
1/1/2022 0:10	CAR 60 K9 (N683830144011035)	40.792728	-81.400268	0
1/1/2022 0:11	CAR 60 K9 (N683830144011035)	40.79272	-81.40025	0
1/1/2022 0:15	CAR 60 K9 (N683830144011035)	40.79273	-81.400266	0
1/1/2022 0:16	CAR 60 K9 (N683830144011035)	40.79272	-81.40025	0
1/1/2022 0:20	CAR 60 K9 (N683830144011035)	40.792727	-81.400273	0
1/1/2022 0:21	CAR 60 K9 (N683830144011035)	40.79272	-81.40025	0
Date	Unit	Location	GPS Distance to here	Left at
12/31/2021 23:50	CAR 60 K9 (N683830144011035)	Canton, OH 44703, USA	0	Trip Start
1/1/2022 0:05	CAR 60 K9 (N683830144011035)	Canton, OH 44706, USA	4.52	1/1/2022 0:29
1/1/2022 0:29	CAR 60 K9 (N683830144011035)	Canton, OH 44706, USA	4.52	Trip End



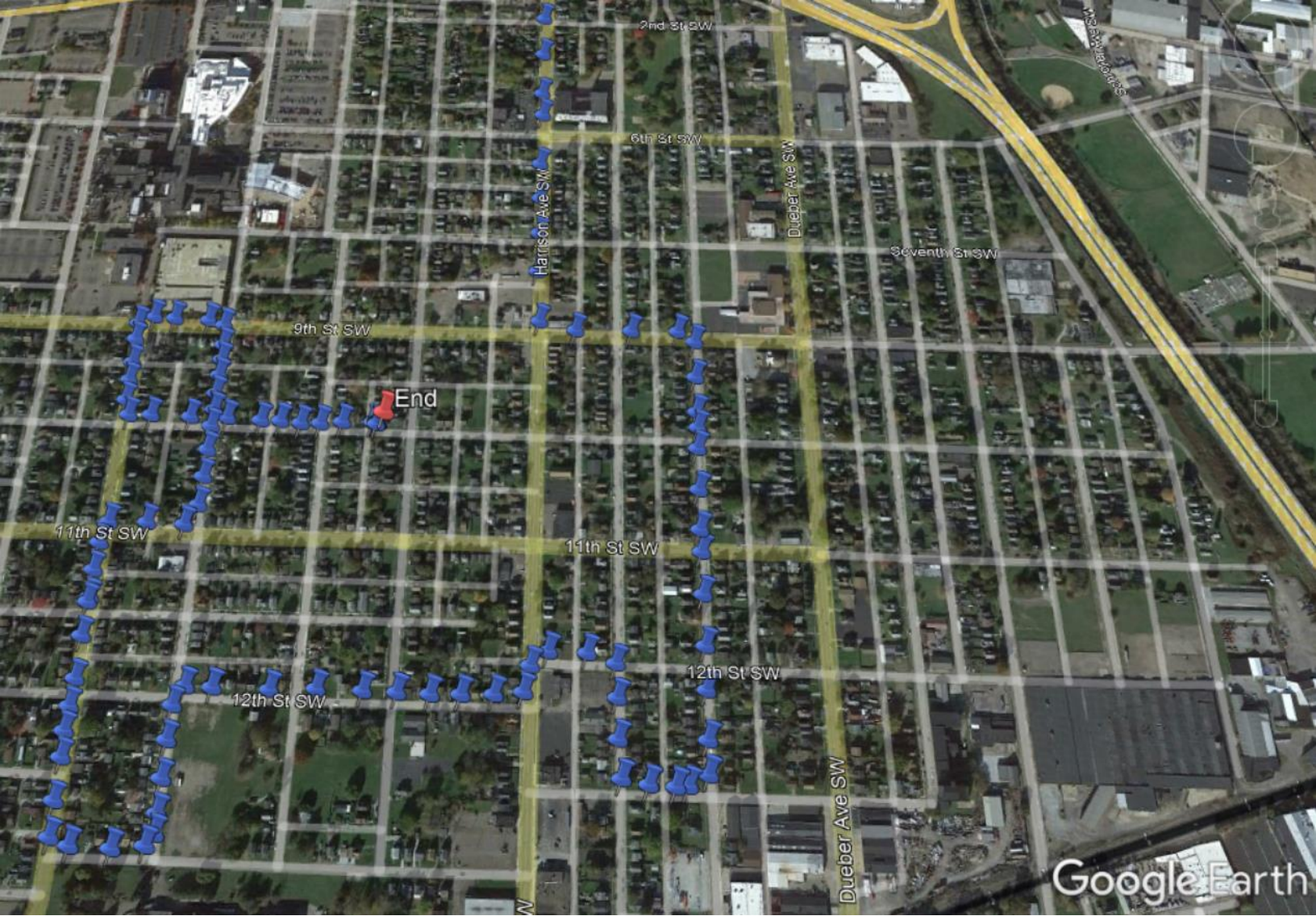


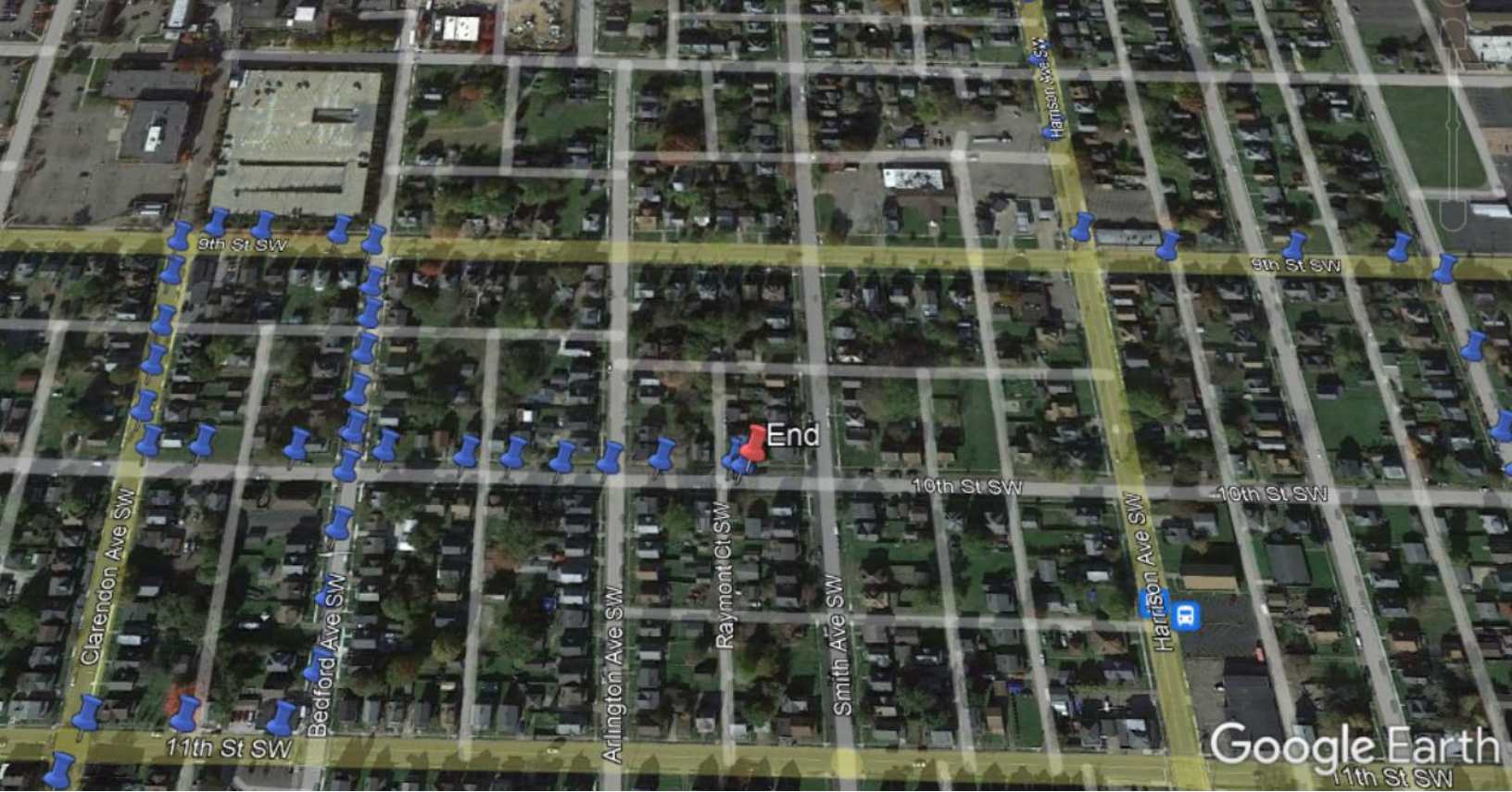
Start

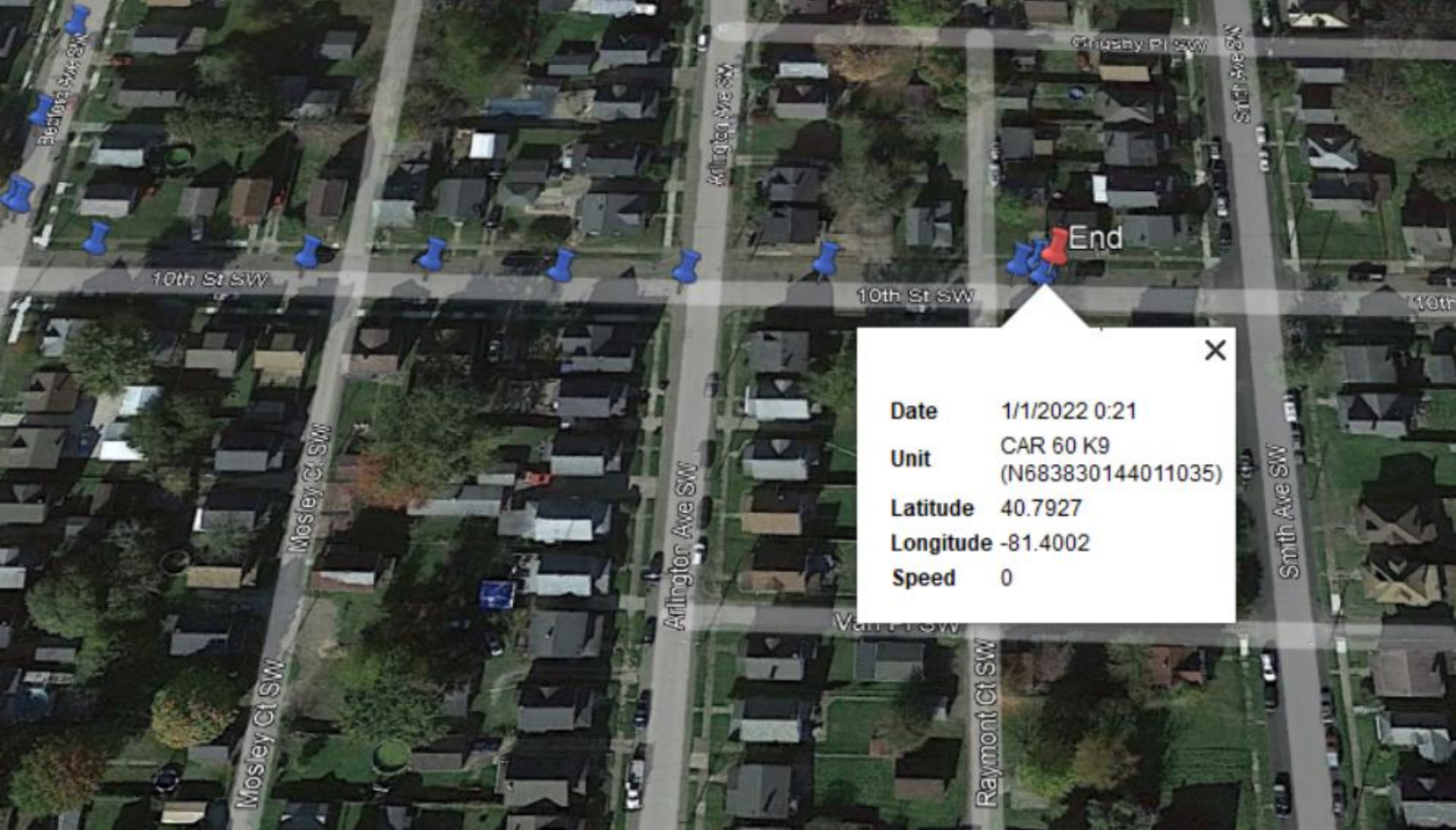
Copy of K9 Car 60: Date	12/31/2021 23:50
Copy of K9 Car 60: Unit	CAR 60 K9 (N683830144011035)
Copy of K9 Car 60: Latitude	40.8093
Copy of K9 Car 60: Longitude	-81.3785
Copy of K9 Car 60: Speed	18

Directions: [To here](#) - [From here](#)

Google Earth







Date 1/1/2022 0:21
Unit CAR 60 K9
(N683830144011035)
Latitude 40.7927
Longitude -81.4002
Speed 0