





ORC FORENSICS

SCENE

USA

DATE

503-657-8330

#MCS2x2

BE 4.0



#MCS2x2

DATE

0.5  
BE

2 1 0

2

8330-83-03

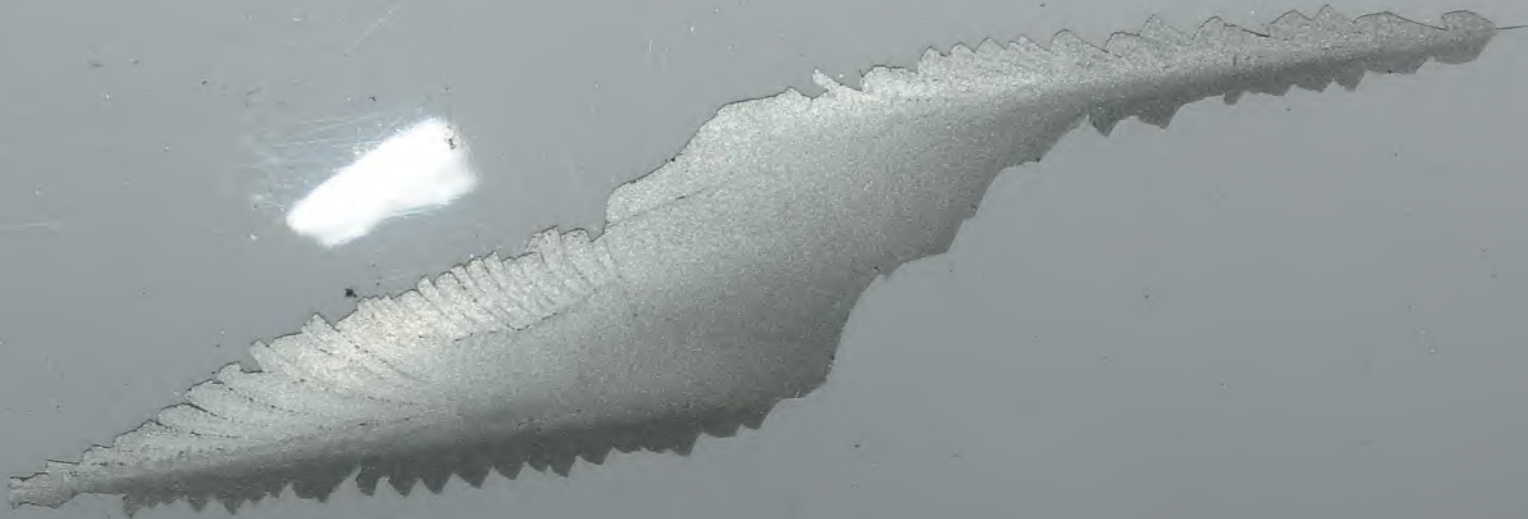


#MCS2x2

USA  
FORENSICS

DATE

BE 0.0



503-657-8330

#MCS2x2

SCENE

USA

DATE



**BE**

6.1





48  
SICHE® Produkt-Information-System  
www.siche.com







REAL  
MAG  
MAG

5.82





FRANKLIN TOWNSHIP

POLICE

49

50

A yellow evidence marker with the number 49 is placed on a concrete surface. The marker is a bright yellow trapezoid with the number '49' printed in large, bold, black digits. It is positioned in the lower right quadrant of the frame. The background shows a dark, textured surface, possibly the underside of a vehicle, with some mechanical components visible. The ground is a light-colored, textured concrete or asphalt surface.

49



50



57





5



CAMRY



JNJ 3078

LE

DAY

JNJ 3078

5 04 JNJ3078  
4-25  
EXPIRES ON APR 17



POLICE









**SHERIFF**

35



EDGE



**INFORMATION  
À LA CHARGE DU VEHICULE**

FRONT / REAR  
WEIGHT: 2 / ARRIERE: 3

do not exceed 410kg or 900lbs.  
ne pas dépasser 410kg ou 900lbs.

**SEE OWNER'S MANUAL  
FOR ADDITIONAL  
INFORMATION**

**CONSULTER LE GUIDE  
DU PROPRIÉTAIRE POUR  
DE PLUS AMPLES  
RENSEIGNEMENTS**

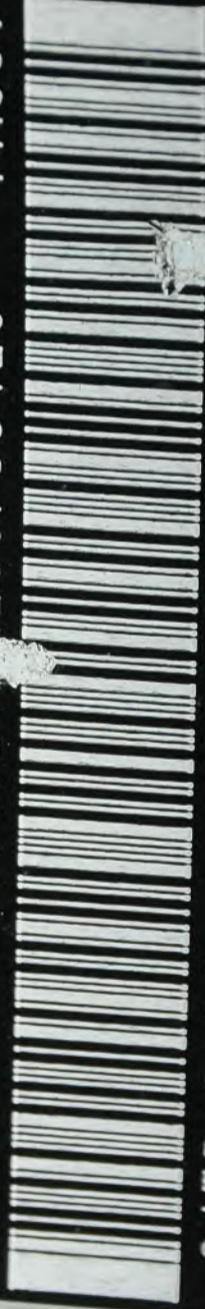
3H

42661-06650

MFD. BY: TOYOTA MOTOR MANUFACTURING,  
KENTUCKY, INC. 10/07

GVWR 4345LB GAWR FR 2668LB RR 2359LB  
THIS VEHICLE CONFORMS TO ALL APPLICABLE  
FEDERAL MOTOR VEHICLE SAFETY STANDARDS AND  
THEFT PREVENTION STANDARDS IN EFFECT ON  
THE DATE OF MANUFACTURE SHOWN ABOVE. CAR

4T1BE46K28U759128



C/TR: 040/FB40 ACV40L--CEANKA  
A/TM: --03A/U250E

96817





 4T1BE46K28U759128  
287









Turkey Hill

SHERIFF

EXTERIOR REPAIR PANEL

SUMIC





SHERIFF

ALWAYS BR