

62



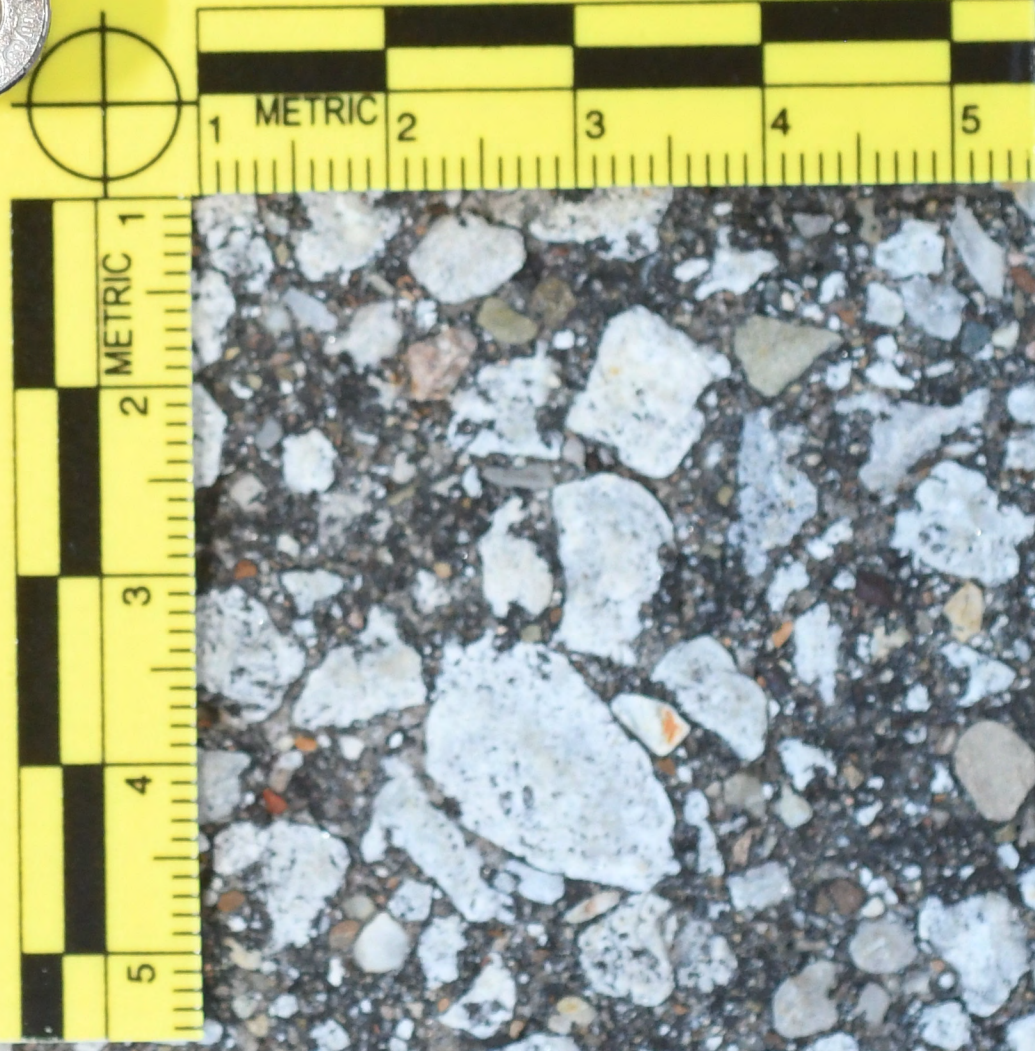
62





55

55





56

56

56





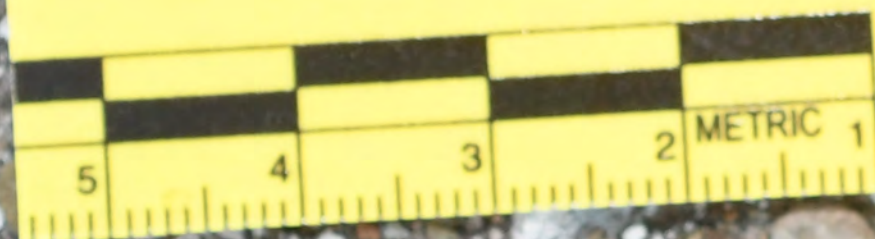
54

54





52



52



53



53



57



57



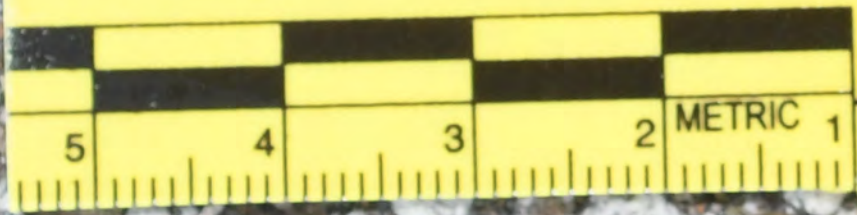


103





588



58





59

59

1 METRIC 2 3 4 5

SPEN  
MUNGER  
10

2 METRIC 3 4 5



60



60



61



61

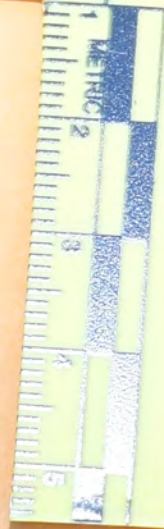


61



61

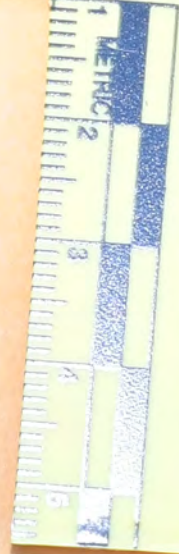
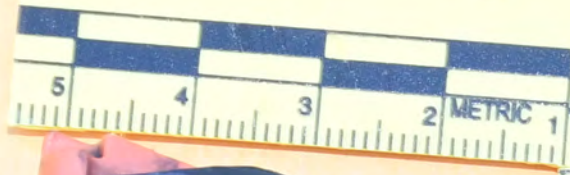




100

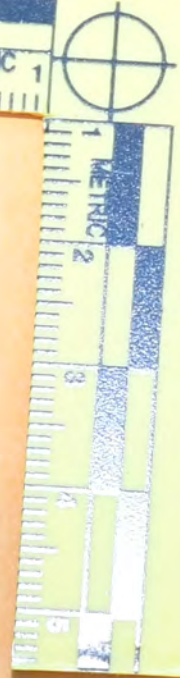




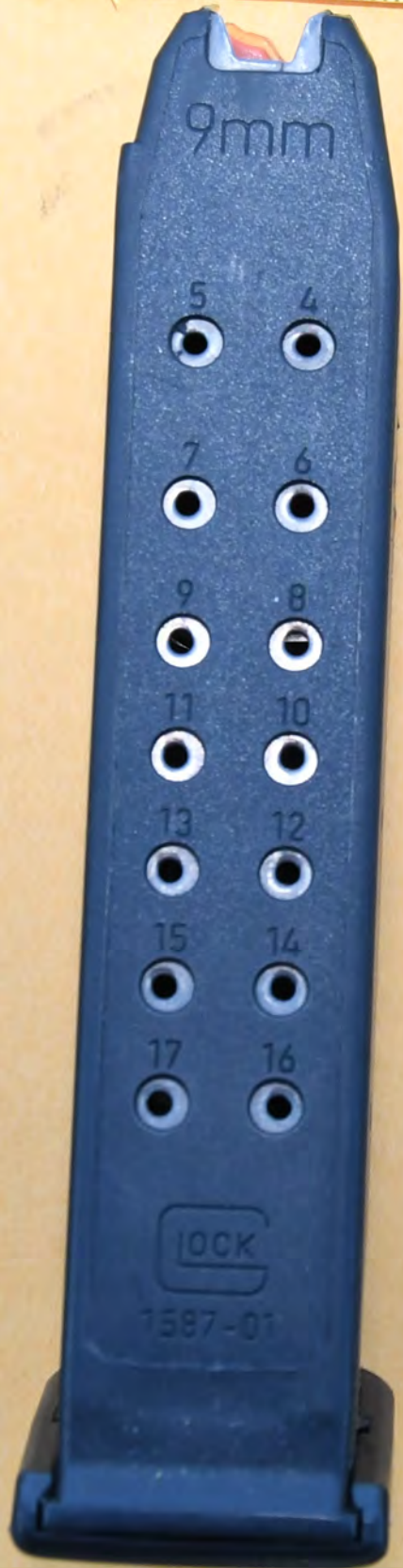


100





100



9mm

5

4

7

6

9

8

11

10

13

12

15

14

17

16

LOCK

1587-01





100

















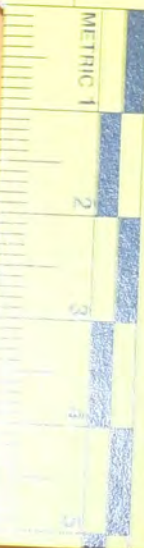




101



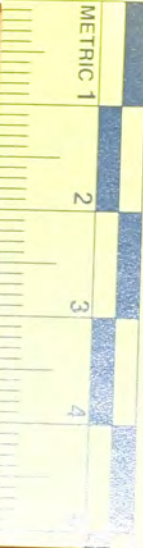
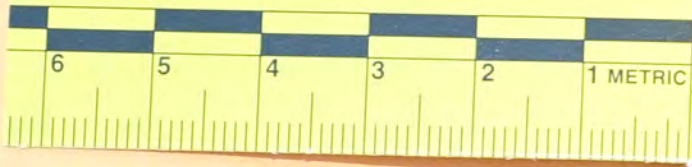
104



104



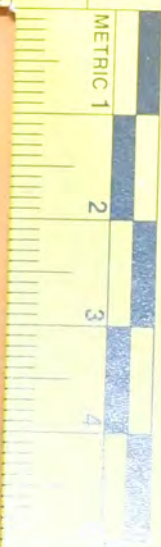
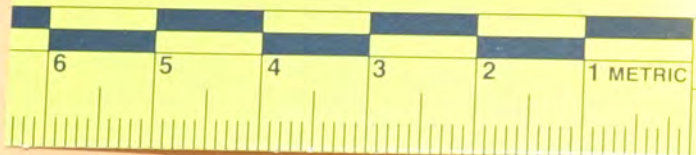




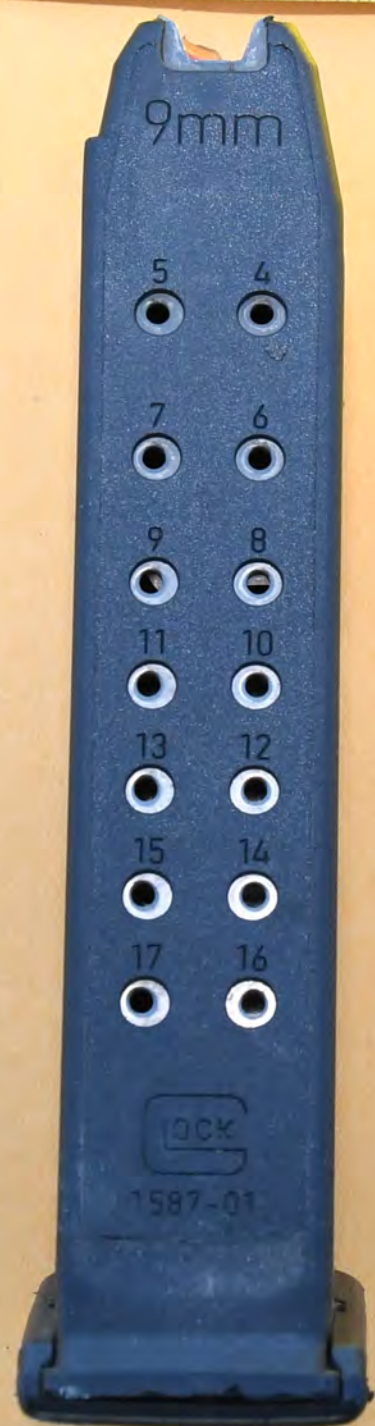
104







104



9mm

5

4

7

6

9

8

11

10

13

12

15

14

17

16

LOCK

1587-01



104

104











98

98

METRIC

1

2

3













MAX. OUTLINE RANGE  
WAVELENGTH: 635 nm  
CLASS IIIa LASER PRODUCT  
210911040 TO 21091211

**WARNING**  
ELECTRONIC CONTROL SERVICE  
• Do not use in wet or outdoors  
• Do not use on flammable  
• Do not use on surfaces  
• Do not use on surfaces  
• Do not use on surfaces  
• Do not use on surfaces

TRIEBEN INTERNATIONAL  
PO BOX 1000  
SPOKANE, WA 99207  
ASSEMBLED IN THE USA

CE

MADE BY TRIEBEN INTERNATIONAL  
TRIEBEN INTERNATIONAL  
PO BOX 1000  
SPOKANE, WA 99207  
ASSEMBLED IN THE USA



**DANGER**  
LASER IRRADIATION - AVOID  
DIRECT EYE EXPOSURE  
MAX OUTPUT: 5 mW  
WAVELENGTH: 630-690 nm  
CLASS IIIa LASER PRODUCT  
(21CFR1040.10 & 1040.11)

**WARNING**  
ELECTRONIC CONTROL DEVICE  
• Can temporarily incapacitate target.  
• Can cause death or serious injury.  
• Obey all safety instructions and warnings.  
• Comply with current labeling requirements and requirements.  
• See www.TARGET.com.  
TASER INTERNATIONAL  
SCOTTSDALE, AZ USA  
WWW.TASER.COM  
ASSEMBLED IN THE USA

**WARNING**  
This post program CEH  
to stop electrical discharge  
after 5 seconds and sounds  
an audible alert.  
Remove instructions and get  
blowing prior to use.  
CE

96



