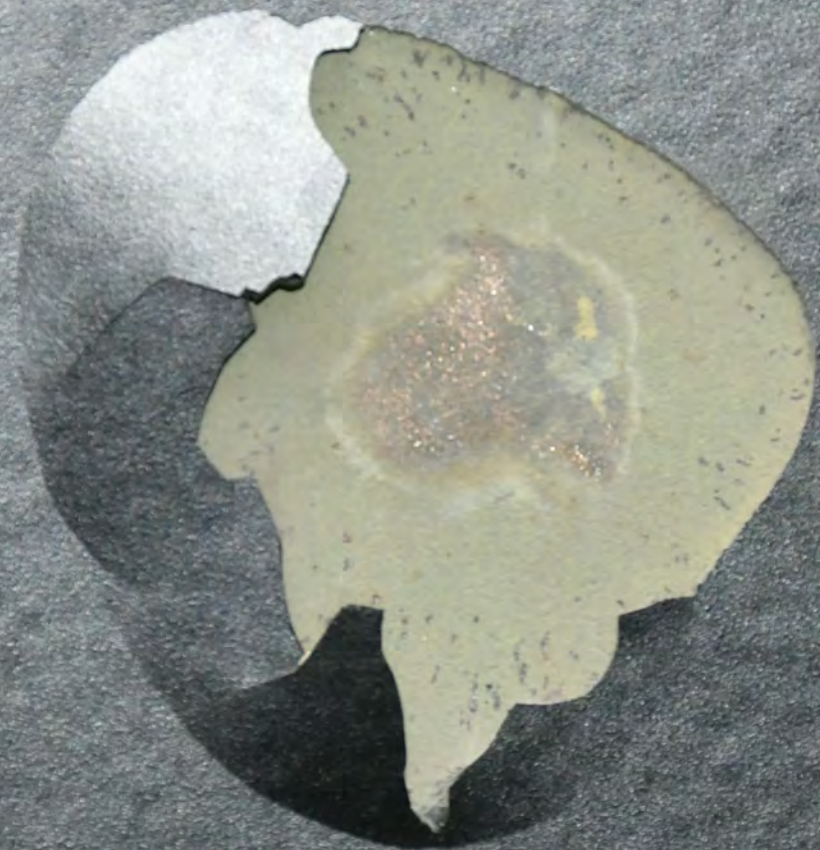
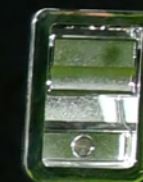
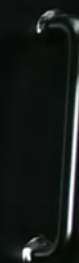


SWAW

ST 20



WAT





313



Small white label with illegible text.

Small white label with illegible text.

Small white label with illegible text.



T



313



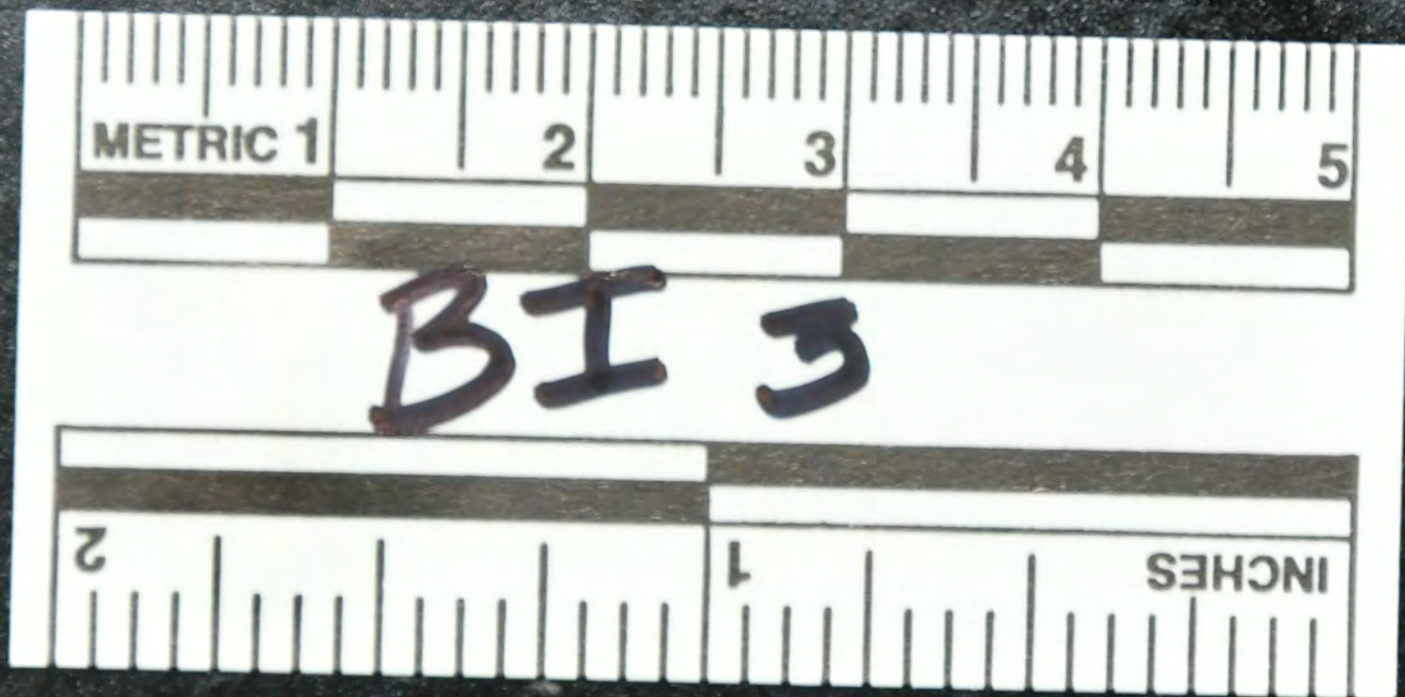
314

315





BI 3

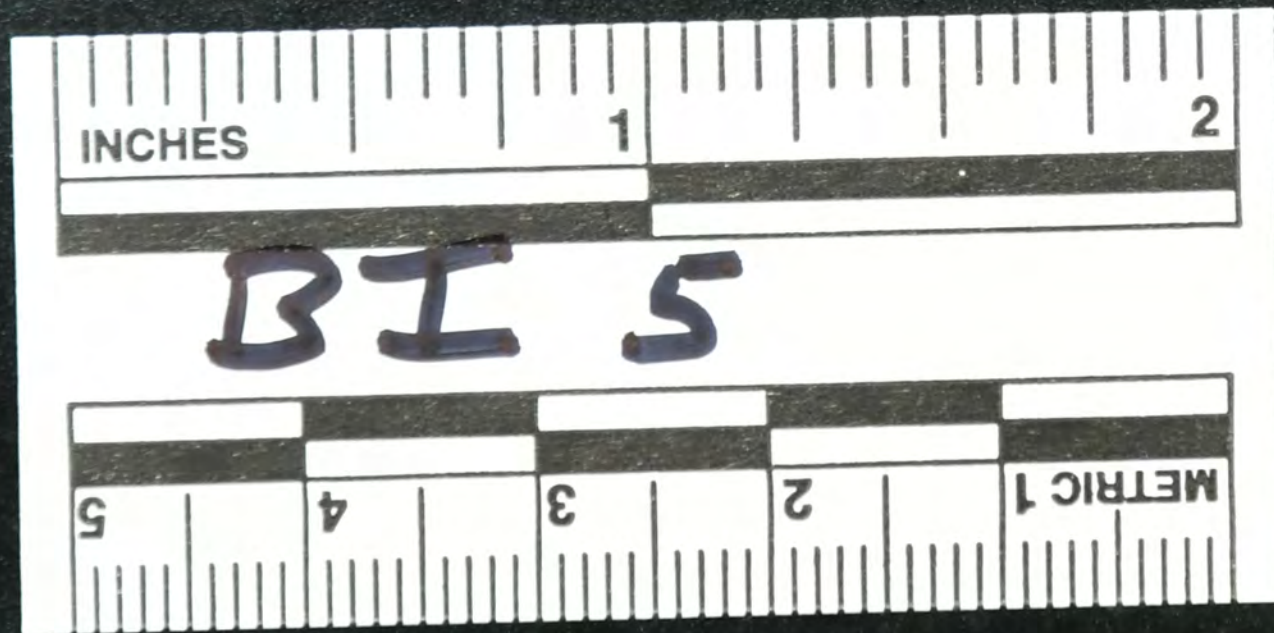


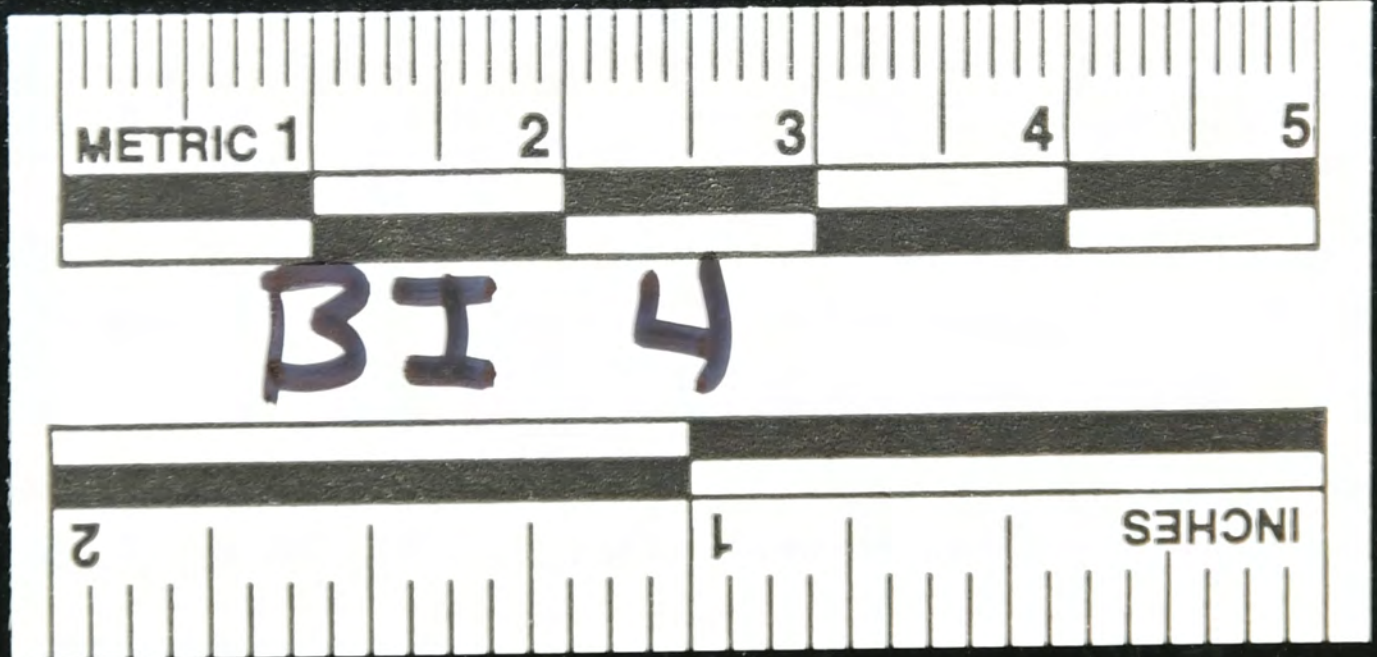
BI 4

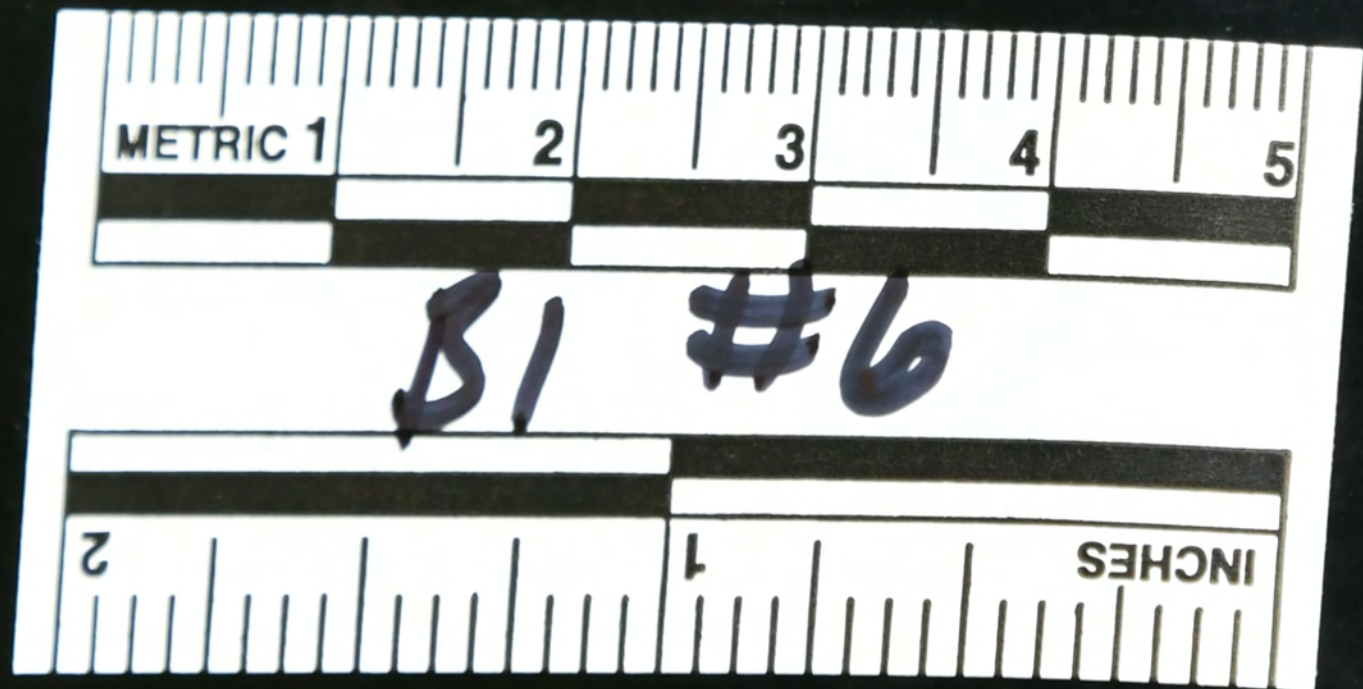
BI 4

BI 5





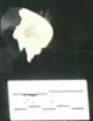
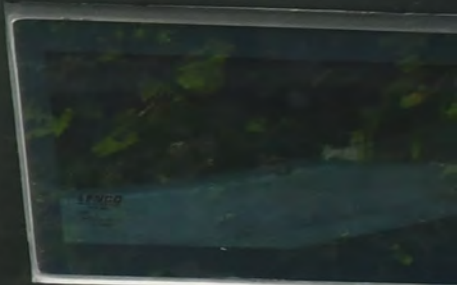




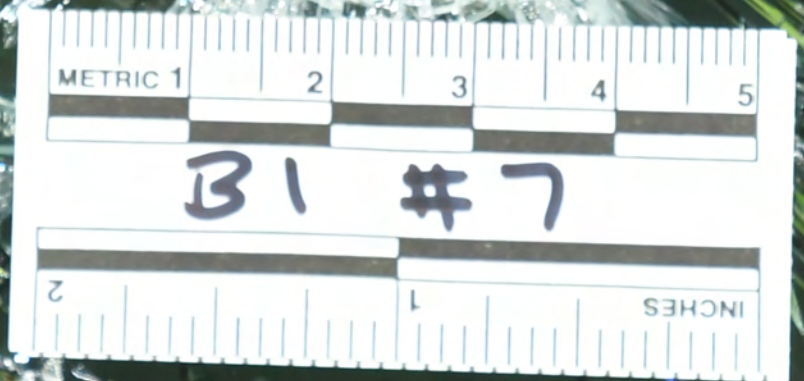
B1 #6

CRISIS RESPONSE TE

STVA



LENIX
ARMORED VEHICLE
TMP-66B
2005
Saint-Gobain Sully, A.
This Side Out



CRISIS R



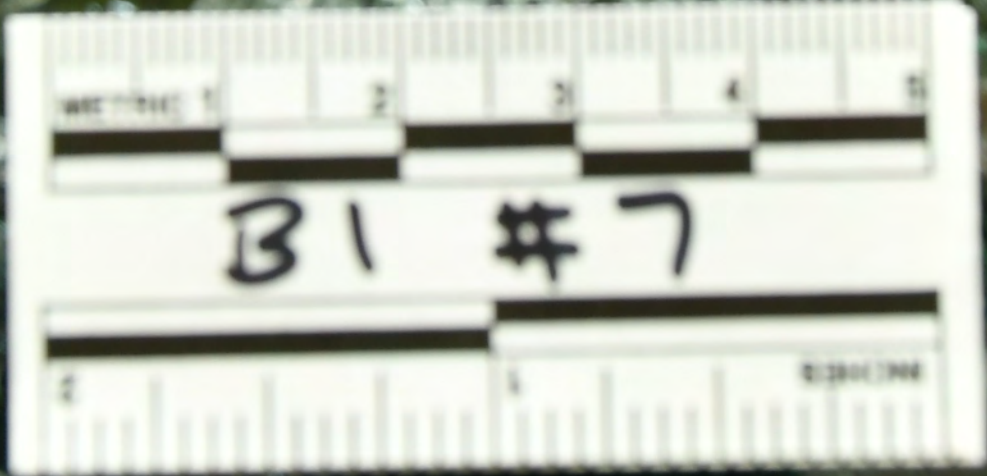
BT 1.0



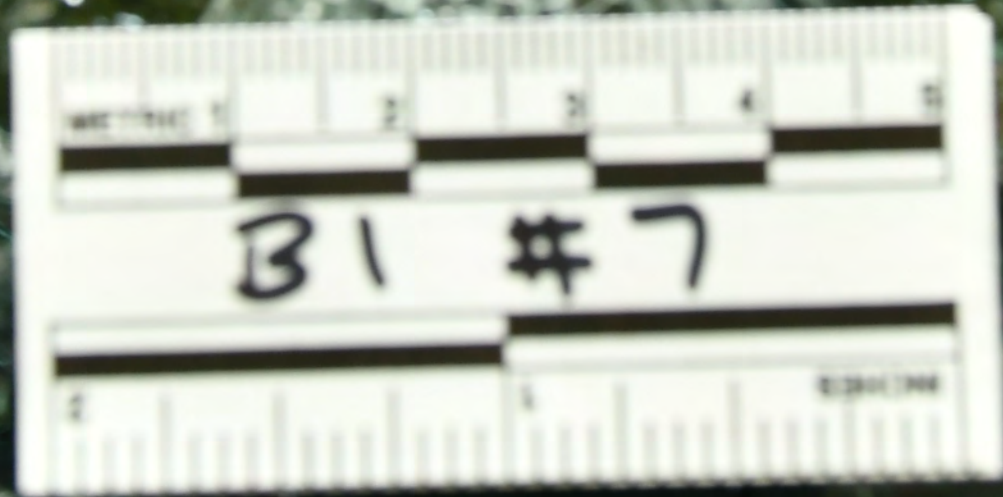


LENCO





B1 #7



B1 #7

LEA
ARMORED VEHICLE
TYPE 6000
2005
Saint-Gobain Sull
This Side Out

