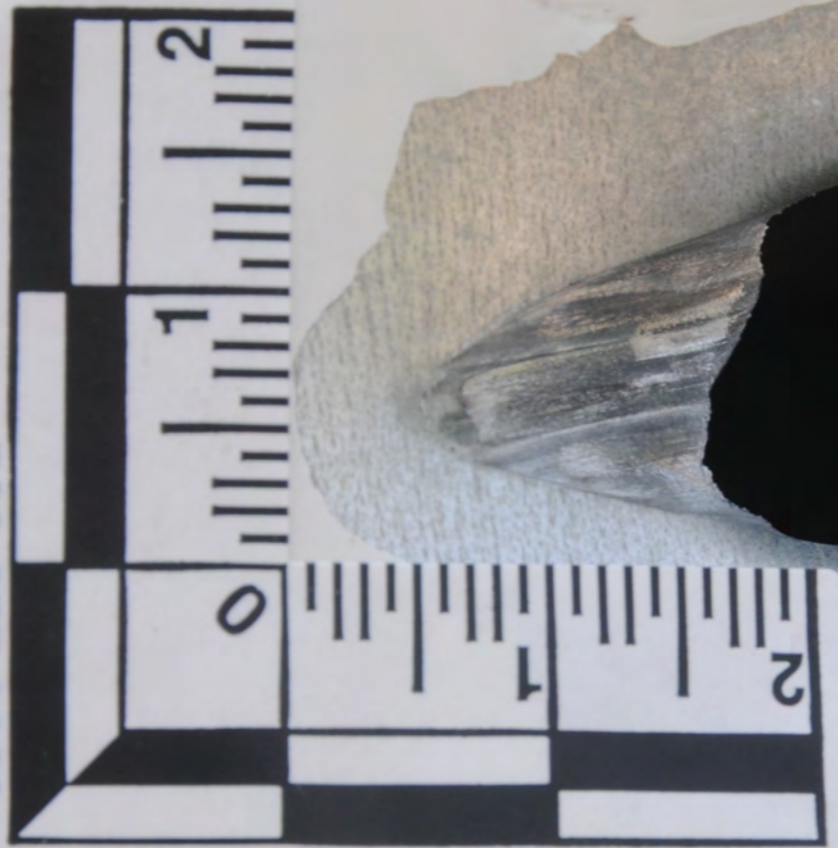


15.0

SCENE

503-657-8330



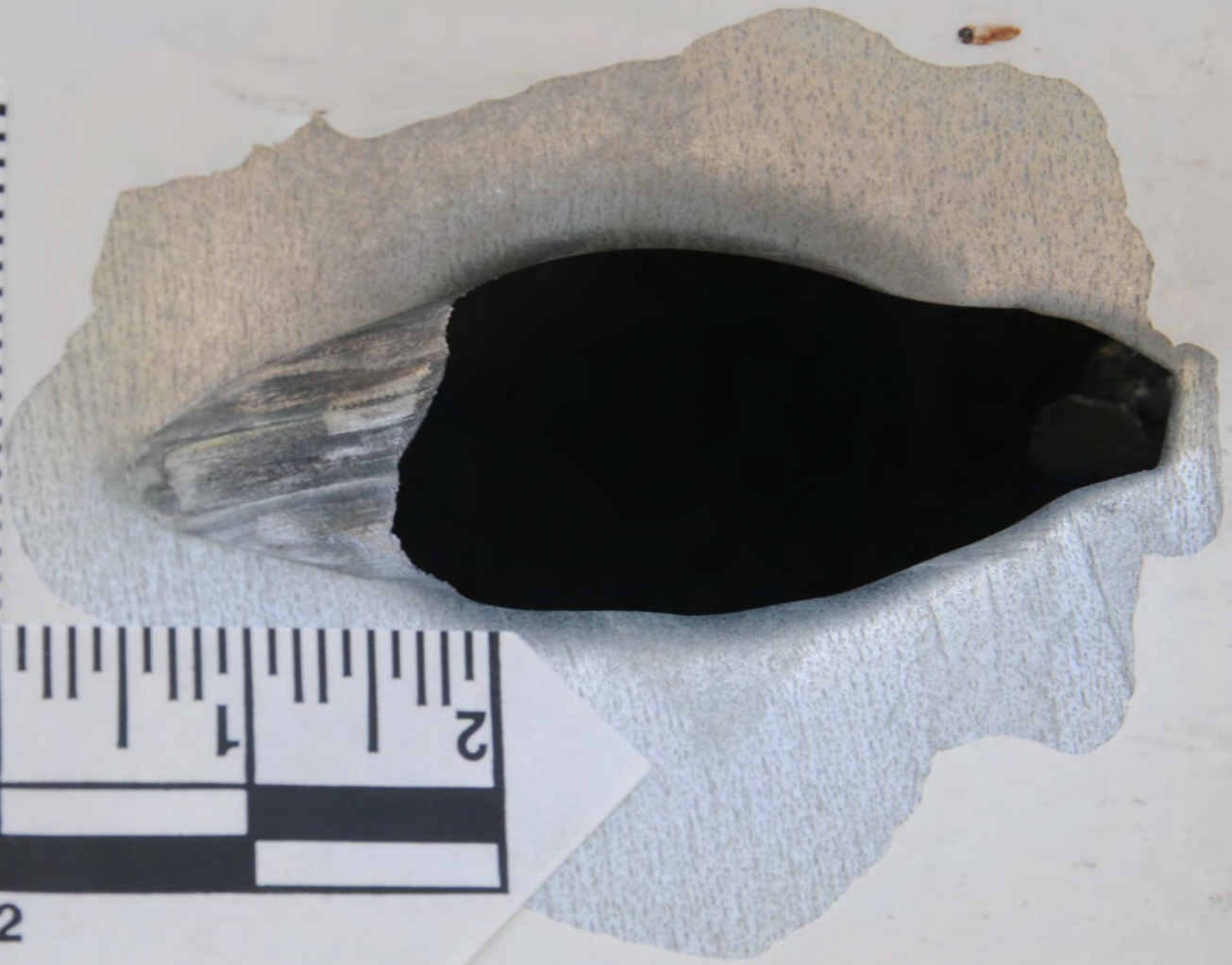
#MCS2x2

USA

DATE

15.0

ORC FORENSICS



0.9

SCENE

503-657-8330



#MCS2x2

USA



DATE 0.9





1 Million Miles

WERNER

FIRE EXTINGUISHER INSIDE

1 MILLION MILES

CAUTION  
WARNING  
FIRE EXTINGUISHER INSIDE  
USE HANDLES  
DO NOT TOUCH  
IN HOT SPOTS  
OR FLAMES  
OR OTHER  
HAZARDOUS  
SOURCES OF  
HEAT  
OR  
FLAME

BE-704  
17

WARNING  
FIRE EXTINGUISHER INSIDE  
USE HANDLES  
DO NOT TOUCH  
IN HOT SPOTS  
OR FLAMES  
OR OTHER  
HAZARDOUS  
SOURCES OF  
HEAT  
OR  
FLAME

1 Million



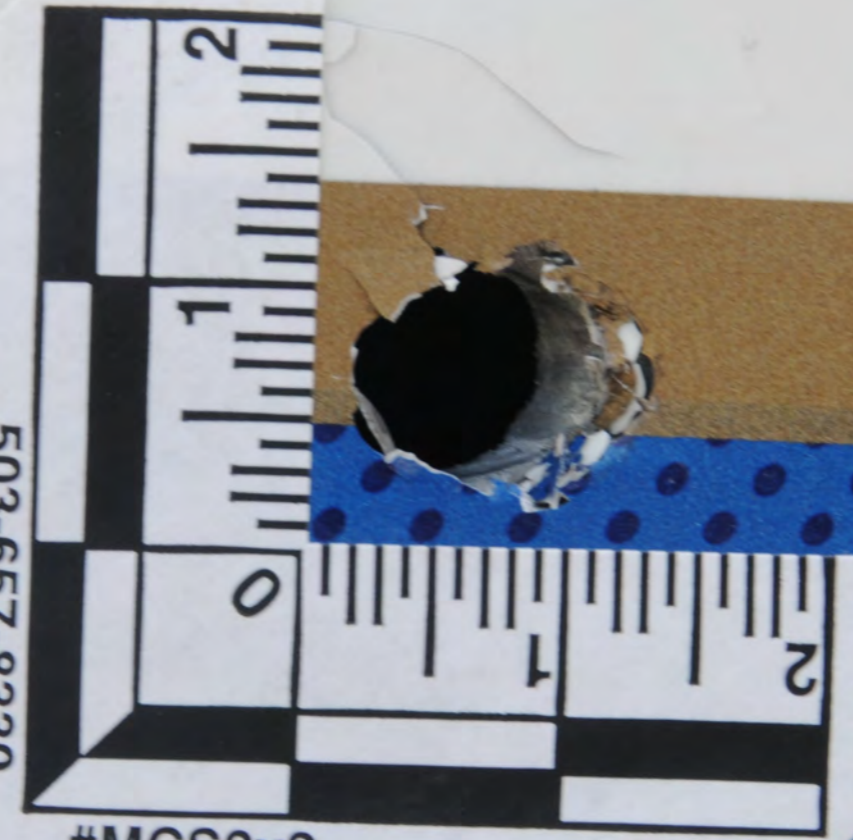
WER



BEV 15.0

SCENE

503-657-8330



#MCS2x2



USA

DATE 15.0



SEE VEHICLE OWNER MANUAL FOR REPAIR PARTS

**FREIGHTLINER COMPONENT**

MANUFACTURED BY: DAIMLER VEHICLOS CO.  
 MODEL: PT12004S1

VEHICLE ID NO: 3A9JHP0P06496  
 VIN: 3A9JHP0P06496

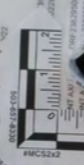
ENGINE MOD: 0113 GEN 3 BOP 14.8L  
 1ST AXLE MOD: 0112 1750 ONE EFFICEN  
 FRONT AXLE MOD: 0112 1750 ONE EFFICEN  
 1ST INT AXLE MOD: MERTON M6-40 14X 14 HE DUAL  
 2ND INT AXLE MOD: MERTON M6-40 14X 14 HE DUAL  
 3RD INT AXLE MOD: MERTON M6-40 14X 14 HE DUAL  
 4TH INT AXLE MOD: MERTON M6-40 14X 14 HE DUAL  
 5TH INT AXLE MOD: MERTON M6-40 14X 14 HE DUAL  
 REAR AXLE MOD: MERTON M6-40 14X 14 HE DUAL

YEAR: 2009  
 MAKE: MERITOR  
 PART NO: 215

FOR COMPLETE PRINT INFORMATION SEE VEHICLE SPECIFICATION SHEET

SEE VEHICLE SPECIFICATION SHEET

BE17.1



17.1



COMPONE



USA

SCENE

~~BE 17.1~~

SEE VEHICLE ID NO.  
WHEN ORDERING PART

9/22

0888-759-8330

DATE

#MCS2x2



89359

0228555

171.

AL MLK

DRF23829505

23825501

INT AXLE

INT A

INT A

INT A

INT AXLE

INT AXLE

INT AXLE

AL MLMS 40,000#

REAR AXLE NO: DRA23825502

RATIO:

2.15

TE ELITE EY

FOR COMPLETE PAINT INFORMATION  
SEE VEHICLE SPECIFICATION SHEET.



BE708  
10 10 0

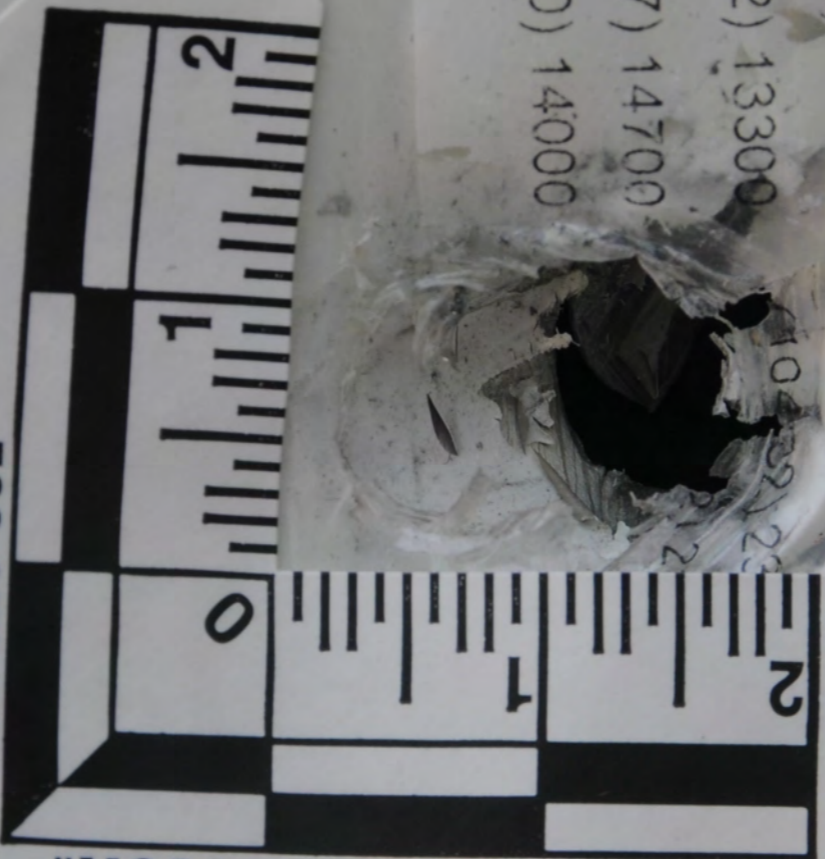
BE73  
472

FREIGHTLINER  
MAXIMUM LOAD BY  
COMPONENT PLACE  
SEE CHART  
MAXIMUM LOAD BY  
COMPONENT PLACE  
SEE CHART  
MAXIMUM LOAD BY  
COMPONENT PLACE  
SEE CHART  
MAXIMUM LOAD BY  
COMPONENT PLACE  
SEE CHART  
MAXIMUM LOAD BY  
COMPONENT PLACE  
SEE CHART  
MAXIMUM LOAD BY  
COMPONENT PLACE  
SEE CHART





COMPONENT	FRONT AXLE	1ST INT AXLE	2ND INT AXLE	3RD
S:	( 5670 ) 12500	( 9072 ) 20000		
ENSION:	( 5670 ) 12500	( 9072 ) 20000		
S:	( 6495 ) 14320	( 10296 ) 22700		
S:	( 6713 ) 14800	( 13426 ) 29600		
S/SPOKES:	( 6032 ) 13300			
ES:	( 6667 ) 14700			
ERING:	( 6350 ) 14000			



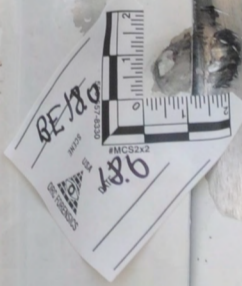
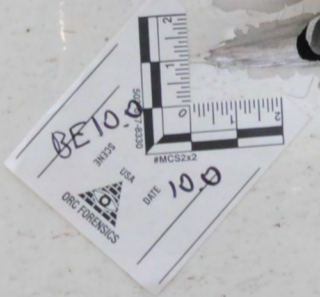
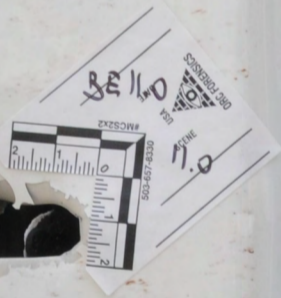
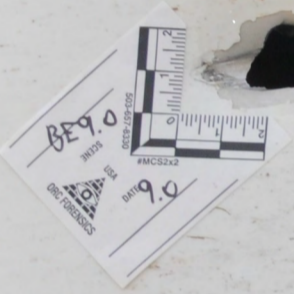
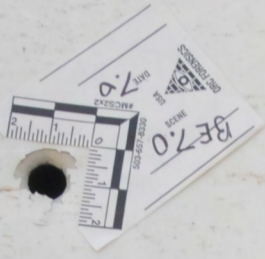
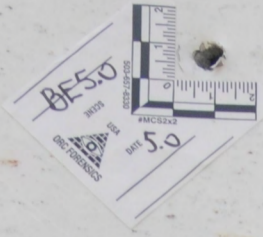
503-657-8330

#MCS2x2

BE 17.2  
SCENE



DATE 17.2



ORC FORENSICS

SCENE  
0.0

REF 70

588-557-8330

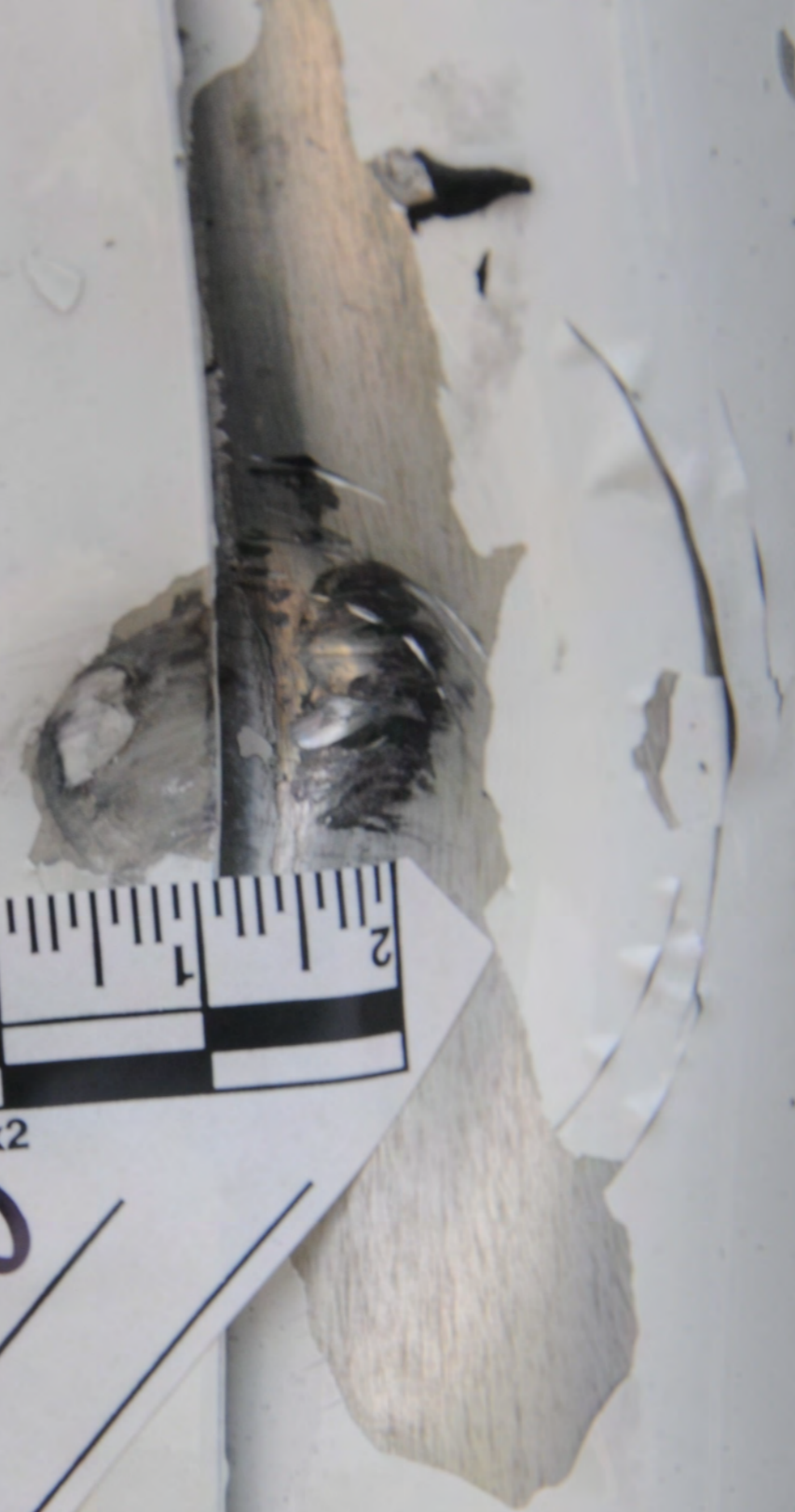
#MCS2x2

SCENE

USA

DATE 7.8.6

ORC FORENSICS



BA 19.0

590-657-8330

SCENE

USA

ORC FORENSICS

DA 19.0

#MCS2x2





ENCLOSURE  
DATE 10/14/13  
BY [illegible]  
BE14.1

ENCLOSURE  
DATE 10/14/13  
BY [illegible]  
BE13.1

PARK-60  
EXIT NOW, TURN RIGHT



#MCS2X2

503-657-8330

BE13.1

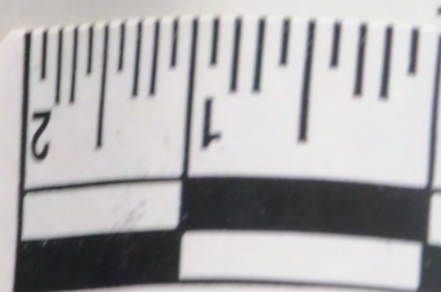
DATE

13 SCENE

USA



ORC FORENSICS



#MCS2x2

503-657-8330

BEKALI

DATE

14.1

SCENE

USA



ORC FORENSICS

**WARNING**  
Seated seat  
must be in forward  
facing locked  
position while  
vehicle is in motion

REMOVE DRIVESHAFT  
OR  
REMOVE ALL  
DRIVE SHAFTS  
OR  
TOW WITH ALL  
DRIVE WHEELS RAISED  
FAILING TO DO SO WILL  
DAMAGE TRANSMISSION

Hot Exhaust  
DEF Refill Nozzle  
Hot exhaust can cause fire.  
Keep flammables and people away  
from exhaust.  
Diesel Exhaust Fluid (DEF) level is  
low. Engine derate likely.  
Refill tank with certified DEF.








503-627-8330  
ORC FORENSICS  
USA  
SCENE  
#MCS2x2  
2 1 0 1 2  
2 1 0 1 2

BE 220  
DATE  
USA  
ORC FORENSICS  
#MCS2X2  
503-657-8330



This block shows a forensic tag and a ruler placed above the top hole in the shattered glass. The tag is white with black text and a logo. The ruler is black and white with markings in inches and centimeters.

BE 210  
DATE  
USA  
ORC FORENSICS  
#MCS2X2  
503-657-8330



This block shows a forensic tag and a ruler placed below the bottom hole in the shattered glass. The tag is white with black text and a logo. The ruler is black and white with markings in inches and centimeters.



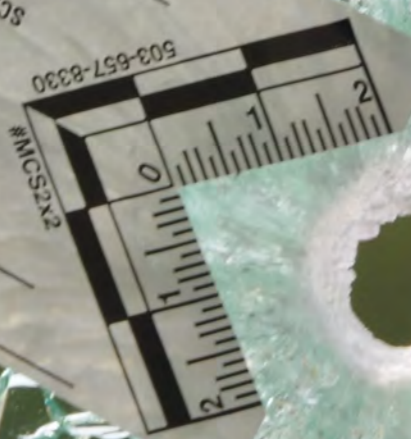
0.73 BE  
DATE  
USA  
ORIG FORENSICS  
#MCS2X2  
503-657-8330  
SCENE

A forensic tag and ruler are placed next to a hole in the glass. The tag is white with black text and a logo. It includes a date field, the text 'USA', 'ORIG FORENSICS', a phone number '503-657-8330', and the word 'SCENE'. A ruler is placed horizontally below the tag, showing markings from 0 to 2 inches.

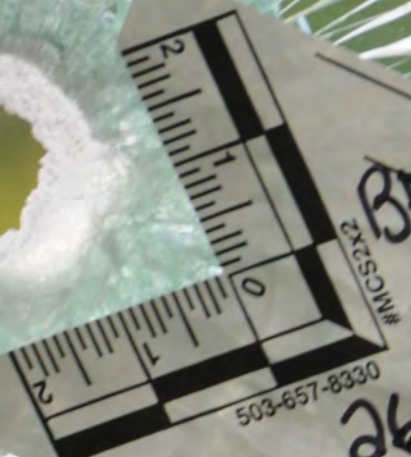
0.74 BE  
DATE  
USA  
ORIG FORENSICS  
#MCS2X2  
503-657-8330  
SCENE

A forensic tag and ruler are placed next to a hole in the glass. The tag is white with black text and a logo. It includes a date field, the text 'USA', 'ORIG FORENSICS', a phone number '503-657-8330', and the word 'SCENE'. A ruler is placed horizontally below the tag, showing markings from 0 to 2 inches.

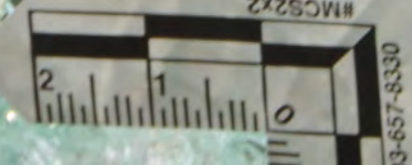
07270  
ORC FORENSICS  
SCENE  
USA  
503-657-8330  
DATE 27.0  
#MCS2X2

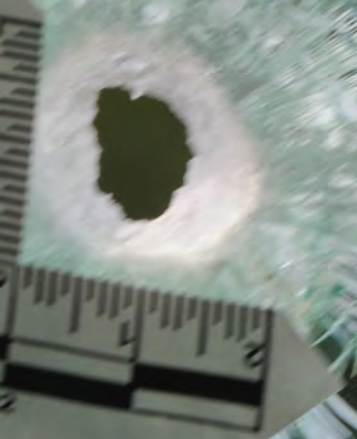


BE26.0  
ORC FORENSICS  
SCENE  
USA  
503-657-8330  
DATE  
#MCS2X2



BE28.0  
ORC FORENSICS  
SCENE  
USA  
503-657-8330  
DATE 28.0  
#MCS2X2





BE 28.0

Q10 FORENSICS  
USA

DATE

28.0

502-467-4665

Q10 FORENSICS  
USA

DATE

28.0

502-467-4665

BE 29.0

Q10 FORENSICS  
USA

DATE

29.0

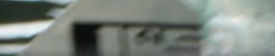
502-467-4665

Q10 FORENSICS  
USA

DATE

29.0

502-467-4665





BE 31.0  
503-657-8330  
#MCS2x2  
USA  
SCENE  
ORC FORENSICS  
DATE

BE 28.0  
503-657-8330  
#MCS2x2  
USA  
SCENE  
ORC FORENSICS  
DATE

BE 29.0  
503-657-8330  
#MCS2x2  
USA  
SCENE  
ORC FORENSICS  
DATE

BE 30.0  
503-657-8330  
#MCS2x2  
USA  
SCENE  
ORC FORENSICS  
DATE



BE33.0  
33.0

BE34.0  
34.0

503-657-8330  
#MCS2x2  
SCENE USA  
ORC FORENSICS  
PA 34.1  
34.1

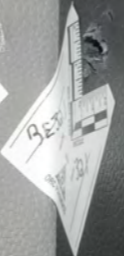








0.6L 3.0  
0.6L 3.0





REVOLVER 1911  
CALIBER .45  
JENSEN'S  
1911-1911

REV

Tube TV

BE 32.2

503-657-8330


SCENE

USA

DATE 32.2

ORC FORENSICS

#MCS2x2

A white forensic evidence tag is placed on a dark, textured surface. The tag features a ruler with markings from 0 to 2 inches. A small, irregular hole is visible in the material, positioned between the 1 and 2-inch marks on the ruler. The tag contains handwritten text in blue ink, including 'BE 32.2' at the top, '503-657-8330' on the left, 'SCENE' and 'DATE 32.2' in the center, and 'ORC FORENSICS' at the bottom. A small logo with an eye icon is also present. The tag is labeled '#MCS2x2' at the bottom.

BE

ORC

