

SHERIFF



SHERIFF



2

EVIDENCE
MARKING BY ALASKA
POLICE DEPARTMENT











1

FRUIT OF THE LOOM

FRUIT OF THE LOOM

FRUIT OF THE LOOM



1

X
SHIRT









1

Blauer

Blauer

Blauer

Blauer

Blauer

KN 7-25-22

clothing fragments

Montgomery County Coroner's Office
CC22-3992 U/F/47
JODIE ARBUCKLE (TENT)
Bil Bip Bih Bic Ur Spl Vit
Brain Liv Gas Decomp-FI
Pathologist **LDL** Path Tech **KN**

7-25-22



KN

Montgomery County Coroner's Office
CC22-3992 U/F/47
JODIE ARBUCKLE (TENT)
Blf Blp Blh Blc Ur Spl Vit
Brain Liv Gas Decomp-FI
Pathologist **LDL** Path Tech **KN**

7-25-22

clothing fragments

Montgomery County Coroner's Office

CC22-3992 U/F/47

JODIE ARBUCKLE (TENT)

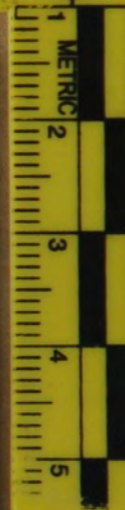
Blf Blp Blh Blc Ur Spl Vit

Brain Liv Gas Decomp-FI

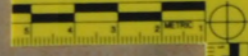
Pathologist **LDL** Path Tech **KN**

7-25-22

DNA blood card



2



3

Swabs:
Oral Rectal Vaginal

Montgomery County Coroner's Office
CC22-3992 U/F/47
JODIE ARBUCKLE (TENT)
Blf Blp Blh Blc Ur Spl Vit
Brain Liv Gas Decomp-FI
Pathologist LDL Path Tech KN

7-25-22

Montgomery County Coroner's Office
CC22-3992 U/F/47
JODIE ARBUCKLE (TENT)
Blf Blp Blh Blc Ur Spl Vit
Brain Liv Gas Decomp-FI
Pathologist LDL Path Tech KN

7-25-22

Montgomery County Coroner's Office
Fingerprints

Case Number: _____

Decedent Information

Name _____

SSN: _____

Location of Death: _____

Race: _____

Sex: _____

DOB: _____

Date of Death: _____

Fingerprint Section

MNI Number: _____

AFIS Number: _____

Checked by: _____

FBI Notified: Yes No BCI Notified: Yes No

MVRCL Number: _____ (If active Homicide Case)

After being checked in AFIS these prints should be filed according to the following schedule.

No AFIS Number: _____ Coroner's Office Files
AFIS Number: _____ MVRCL Fingerprint Files
Active Homicide: _____ MVRCL Case File

KN 7-25-22

PROPERTY OF:
JODIE ARBUCKLE (tent)
22-3992

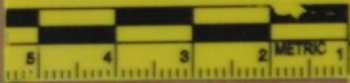


Montgomery County Coroner's Office
CC22-3992 U/F/47
JODIE ARBUCKLE (TENT)
Blf Blp Blh Blc Ur Spl Vit
Brain Liv Gas Decomp-FI
Pathologist LDL Path Tech KN

7-25-22

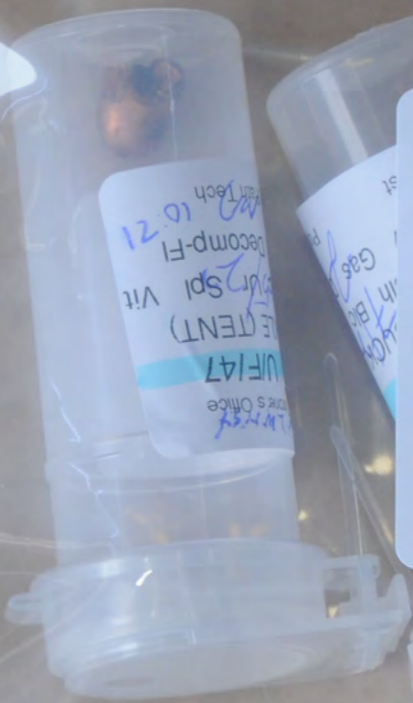
EVIDENCE

- Left fingernail scrapings
- Right fingernail scrapings
- Head hair plucked
- Pubic hair combed
- ~~Pubic hair plucked~~
- ~~Other (specify)~~



4

7-25-22
KJ



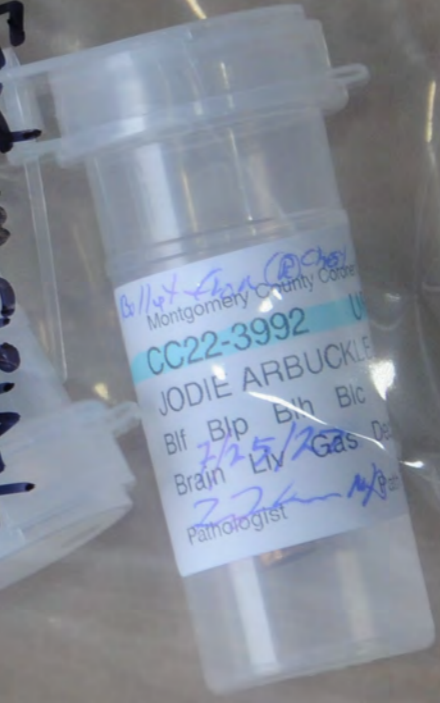
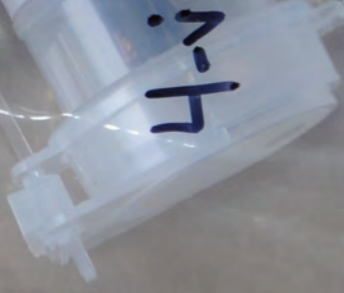
Montgomery County Coroner's Office
CC22-3992 U/F/47
 JODIE ARBUCKLE (TENT)
 Blf Blp Blh Blc Ur Spl Vit
 Brain Liv Gas Decomp-FI
 Pathologist **LDL** Path Tech **KN**

7-25-22

4-vials w/ projectiles



Montgomery County Coroner's Office
CC22-3992
 JODIE ARBUCKLE (TENT)
 Blf Blp Blh Blc Ur Spl Vit
 Brain Liv Gas Decomp-FI
 Pathologist **LDL** Path Tech **KN**



Montgomery County Coroner's Office
CC22-3992
 JODIE ARBUCKLE (TENT)
 Blf Blp Blh Blc Ur Spl Vit
 Brain Liv Gas Decomp-FI
 Pathologist **LDL** Path Tech **KN**

23-2

Coroner's Office
U/F/47
BUCKLE (TENT)
Bic Ur Spl Vit
Gas Decomp-FI
Path Tech 10:21

Montgomery County Coroner's Office
CC22-3992 U/F/47
DODIE ARBUCKLE (TENT)
Rt Bic Ur Spl Vit
Decomp-FI

hip
Coroner's Office
UJF/47

ner's Office
F/47
ENT)
pl Vit
F-100E ARBUICITE

3992

Foot & hip
County Coroner's Office

992 U/F/47

BUCKLE (TENT)

~~Blg~~ Ur Spl Vit

nn-Fl

530

Montgomery County Coroner's Office
CC22-3192 U/F
JODIE A. BUCKLE (TE
Blf Bip Blh Blc Ur
Brain 7/25/22 Gas Decor
Path Te

7-25-22

KN



Montgomery County Coroner's Office
CC22-3994 U/M/27
COLE WHITE (TENT)
Bir Bip Bih Blc Ur Spl Vit
Brain Liv Gas Decomp-FI
Pathology LDL Path Tech KN

7-25-22

clothing

Montgomery County Coroner's Office

CC22-3991 U/M/27

COLE WHITE(TENT)

Blf Blp Blh Blc Ur Spl Vit

Brain Liv Gas Decomp-Fl

Pathologist LDL Path Tech KN

7-25-22

clothing

Montgomery County Coroner's Office

CC22-3991 U/M/27

COLE WHITE(TENT)

Blf Blp Blh Blc Ur Spl Vit

Brain Liv Gas Decomp-Fl

Pathologist

Path Tech

DNA blood card



6



Swabs:
Oral Rectal Vaginal

Montgomery County Coroner's Office
CC22-3991 U/M/27
COLE WHITE(TENT)
Blf Blp Blh Blc Ur Spl Vit
Brain Liv Gas Decomp-FI
Pathologist **LDL** Path Tech **KW**

7-25-22

Montgomery County Coroner's Office
CC22-3991 U/M/27
COLE WHITE(TENT)
Blf Blp Blh Blc Ur Spl Vit
Brain Liv Gas Decomp-FI
Pathologist **LDL** Path Tech **KW**

7-25-22

EVIDENCE

- Left fingernail scrapings
- Right fingernail scrapings
- Head hair plucked
- Pubic hair combed
- Pubic hair plucked

~~Other (specify)~~

Montgomery County Coroner's Office
CC22-3991 U/M/27
COLE WHITE(TENT)
Blf Blp Blh Blc Ur Spl Vit
Brain Liv Gas Decomp-FI
Pathologist **LDL** Path Tech **KW**

7-25-22

Montgomery County Coroner's Office Fingerprints

Case Number: _____

Decedent Information

Name _____ Race: _____ Sex: _____ DOB: _____

SSN: _____ Date of Death: _____

Location of Death: _____

Fingerprint Section

MNI Number: _____ AFIS Number: _____

Checked by: _____

FBI Notified: Yes No BCI Notified: Yes No

MVRCL Number: _____ (If active Homicide Case)

After being checked in AFIS these prints should be filed according to the following schedule.

- No AFIS Number: Coroner's Office Files
- AFIS Number: MVRCL Fingerprint Files
- Active Homicide: MVRCL Case File



Montgomery County Coroner's Office

EX22-3986 B/M/41

MATTHEW YATES

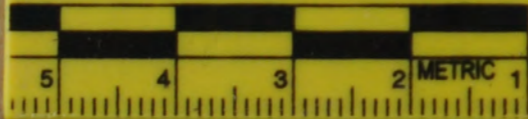
Blf Blp Blh Blc Ur Spl Vit

Brain Liv Gas Decomp-FI

Pathologist **LDL** Path Tech **KN**

7-25-22

DNA blood card

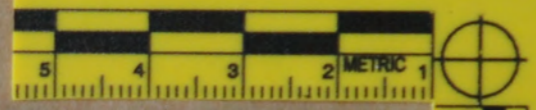


8

PC 7-25-22

PROPERTY OF:
MATTHEW YATES

22-3980



9

Swabs:
Oral Rectal Vaginal

Montgomery County Coroner's Office
EX22-3986 B/M/41
MATTHEW YATES
Blf Blp Blh Blc Ur Spl Vit
Brain Liv Gas Decomp-FI
Pathologist LDL Path Tech KN

7-25-22



Montgomery County Coroner's Office
EX22-3986 B/M/41
MATTHEW YATES
Blf Blp Blh Blc Ur Spl Vit
Brain Liv Gas Decomp-FI
Pathologist LDL Path Tech KN

7-25-22

Montgomery County Coroner's Office Fingerprints

Case Number: _____

Decedent Information

Name _____ Race: _____ Sex: _____ DOB: _____

SSN: _____ Date of Death: _____

Location of Death: _____

Fingerprint Section

MNI Number: _____ AFIS Number: _____

Checked by: _____

FBI Notified: Yes No BCI Notified: Yes No

MVRCL Number: _____ (If active Homicide Case)

After being checked in AFIS these prints should be filed according to the following schedule.

- No AFIS Number: Coroner's Office Files
- AFIS Number: MVRCL Fingerprint Files
- Active Homicide: MVRCL Case File

Montgomery County Coroner's Office
EX22-3986 B/M/41
MATTHEW YATES
Blf Blp Blh Blc Ur Spl Vit
Brain Liv Gas Decomp-FI
Pathologist LDL Path Tech KN

7-25-22

EVIDENCE

Left fingernail scrapings

Right fingernail scrapings

Head hair plucked

Pubic hair combed

~~Pubic hair plucked~~

~~Other (specify)~~