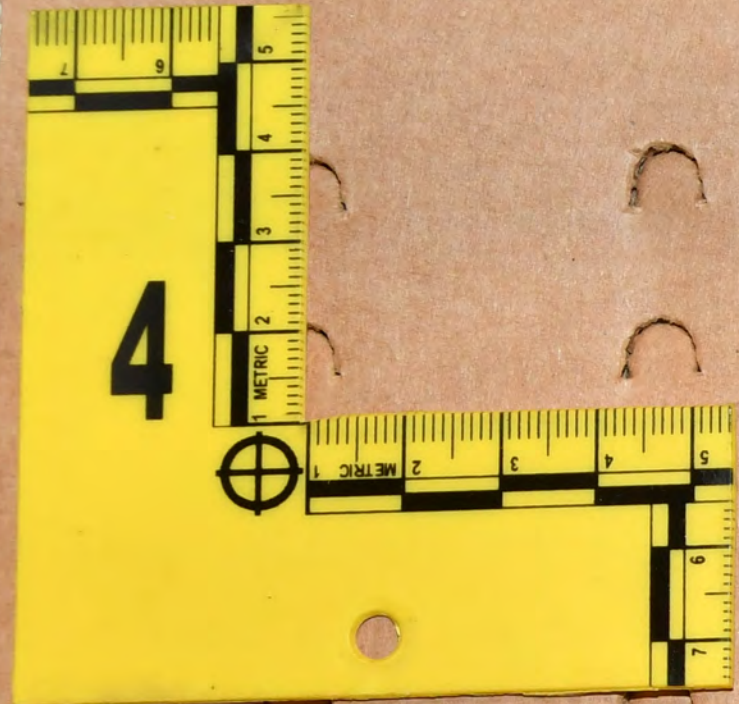


M&P₉

M2.0





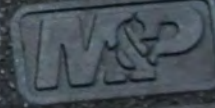


N&P₉

M2.0



TLR-1[®] STREAMLIGHT
S/N C4-849872 1221
Patented

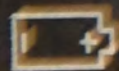


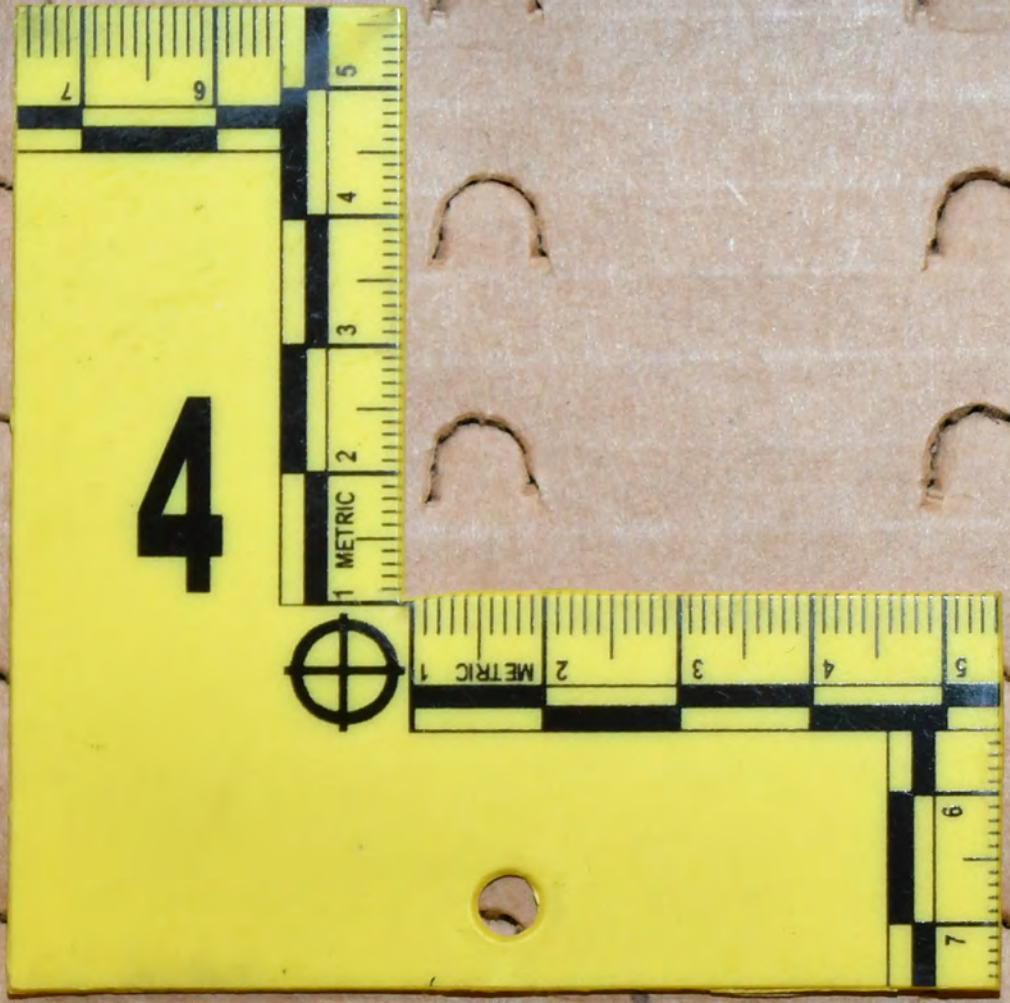
4

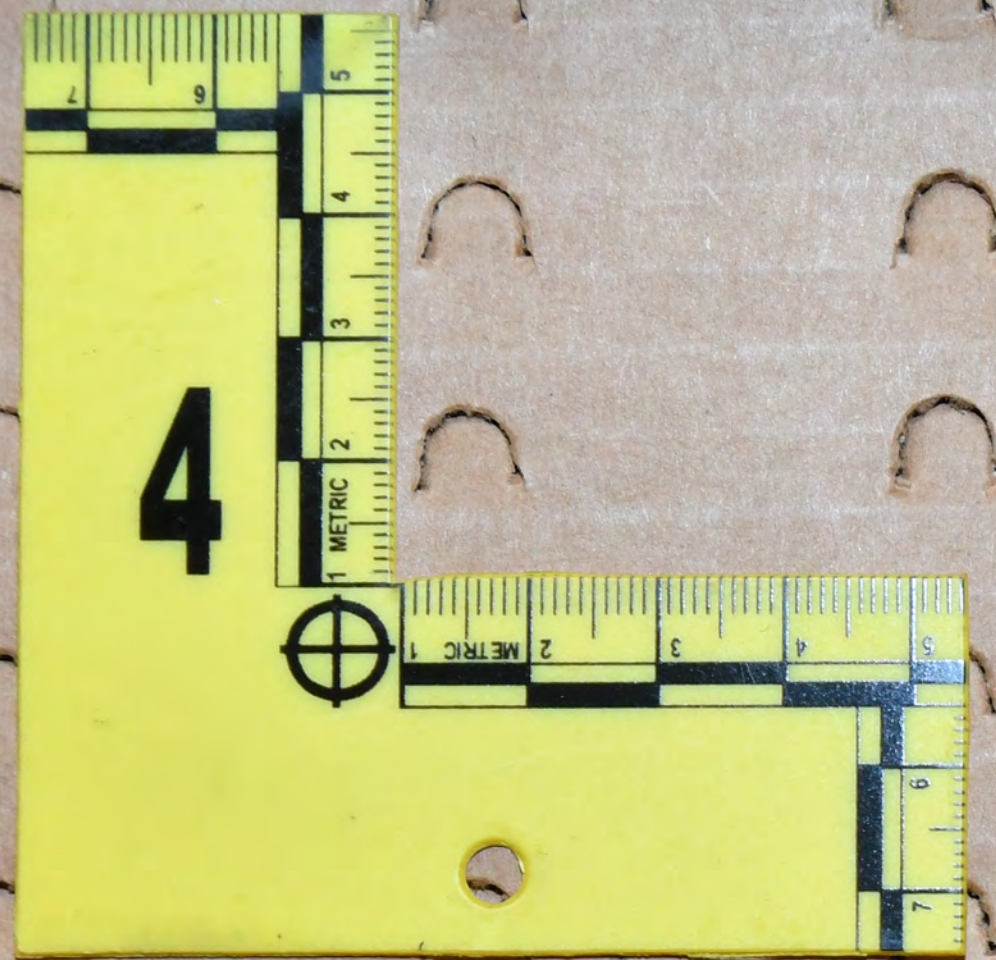
N&P₉

M2.0

 **STREAMLIGHT**
S/N C4-649672 1221
Patented









N&P 9

M2.0



HOT

TLR-1 HL
STREAMLIGHT

S/N 511240
0518

5



METRIC 1
2
3
4

METRIC 1
2
3
4



M&P₉

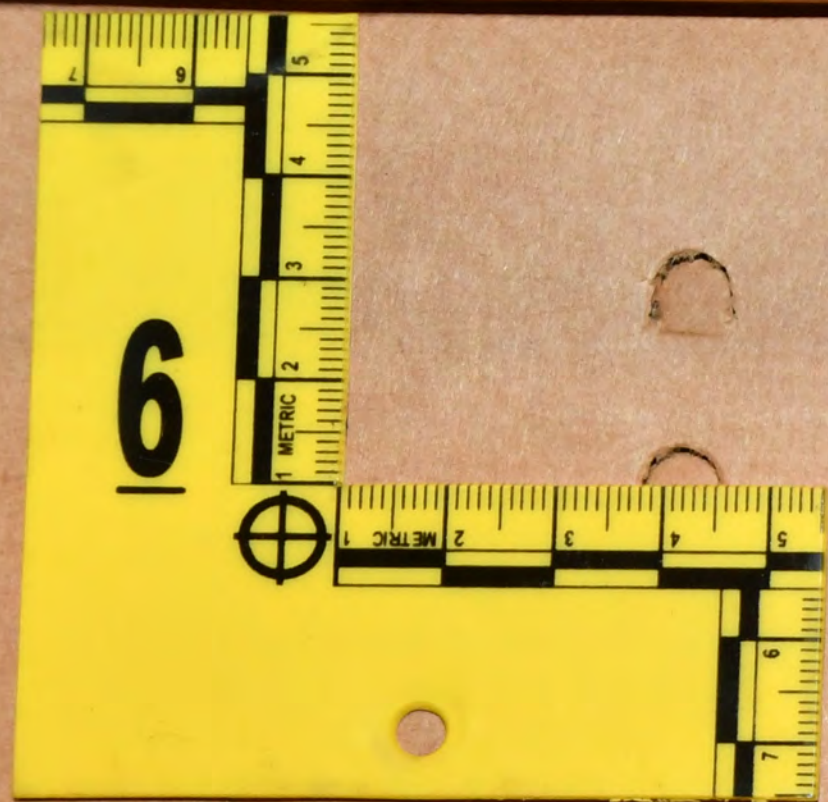
M2.0



HL[®] SN 511240
0518
LIGHT



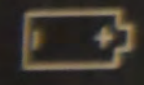






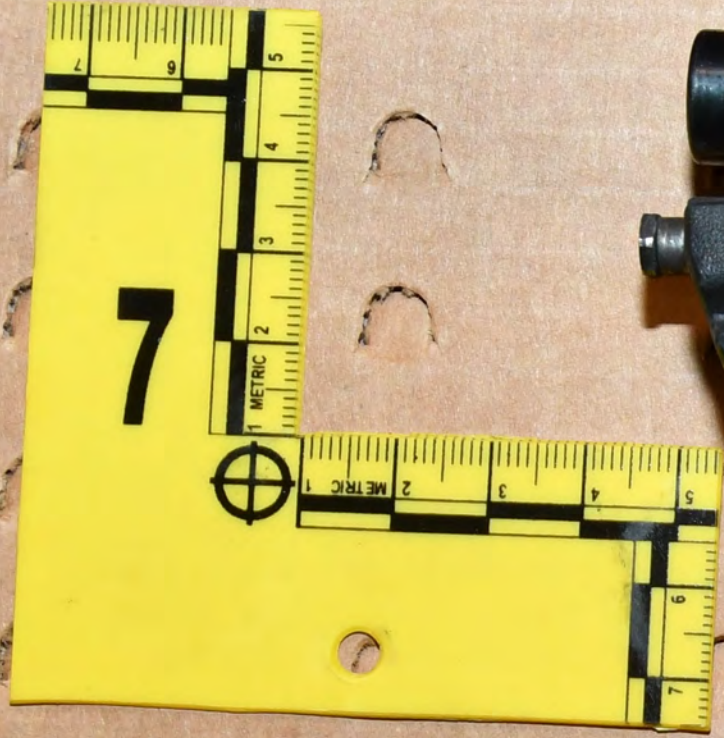
N&P₉

M2.0



S/N 552322
0918

GHT











POLICE

RIGHT LANE MUST EXIT

POLICE

48

RightWay
AUTOMOTIVE CREDIT



NAF11311 L3

BETTY BOOP
HDG 6364
25 She's So Fine 1923

14

13

11

35

34

16

17

32

31

30

23

29

27

28

26

24

22

21





48

11

20

CRIME



OHIO
7H63304

OHIO
HDG 6364
25

18

1

4

5

1