



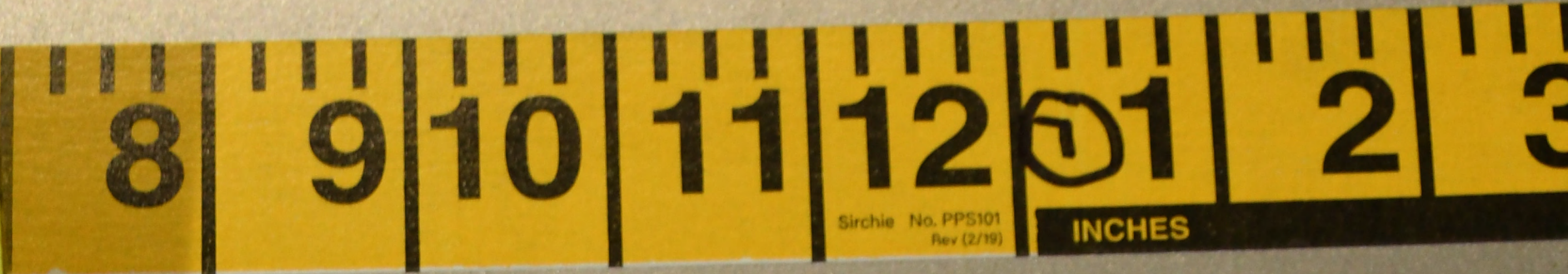
(418) 586-2345



1

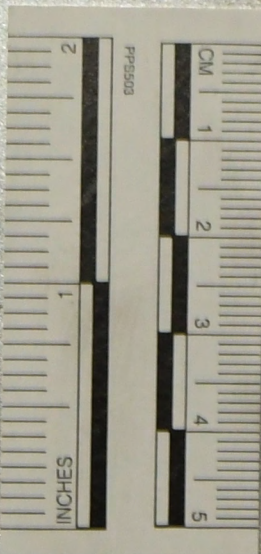
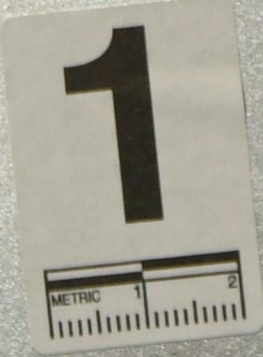
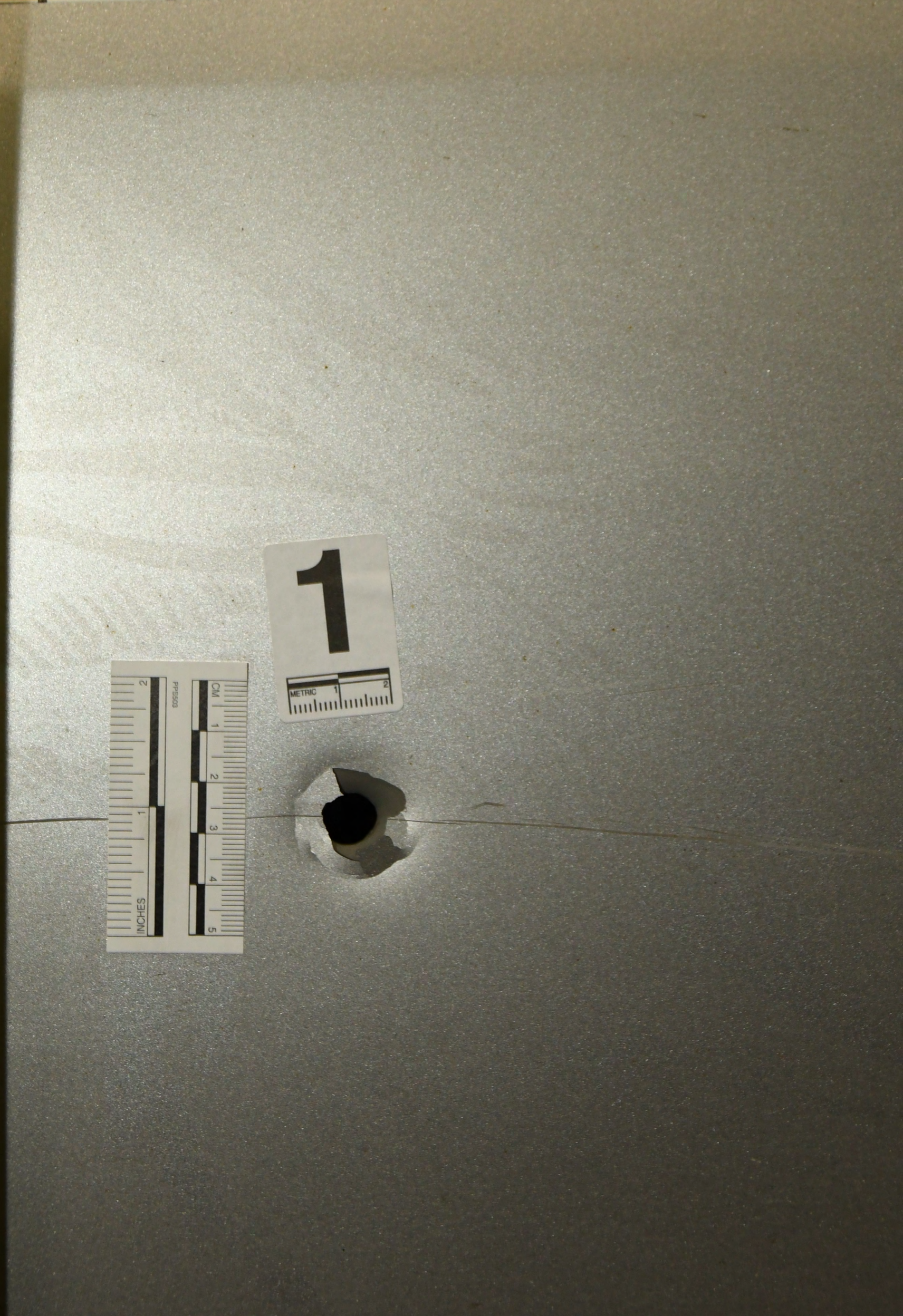
2

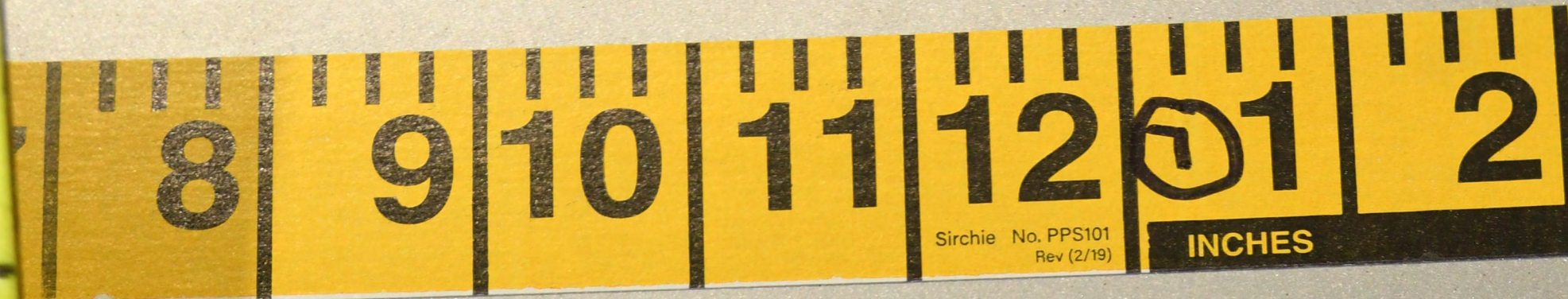
3



Sirchie No. PPS101
Rev (2/19)

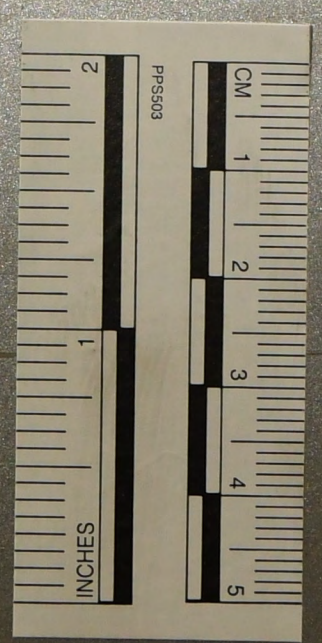
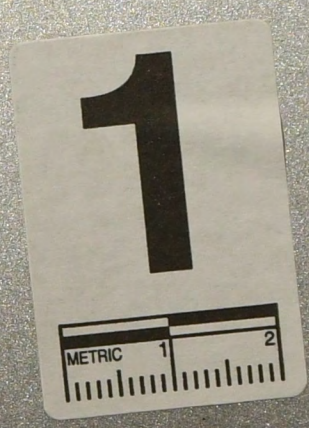
INCHES





Sirchie No. PPS101
Rev (2/19)

INCHES





11
10
9
8
7
6
5
4
3
2
1
5
11
10
9
8
7
6
5
4
3
2
1
4
11
10
9
8
7
6

2

3

4/25/23

2014

5 6 7 8 9 10 11 12 1 2 3 4 5 6 7 8 9 10 11 9 1 2 3 4 5 6 7 8 9 10 11 12

INCHES

INCHES

INCHES

Start

END

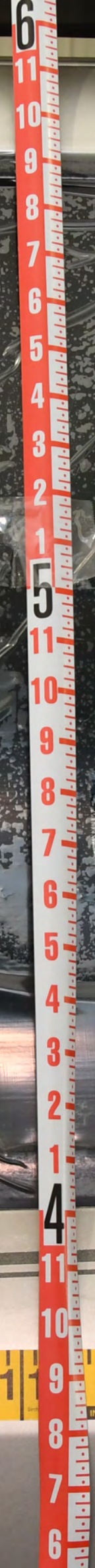
82323

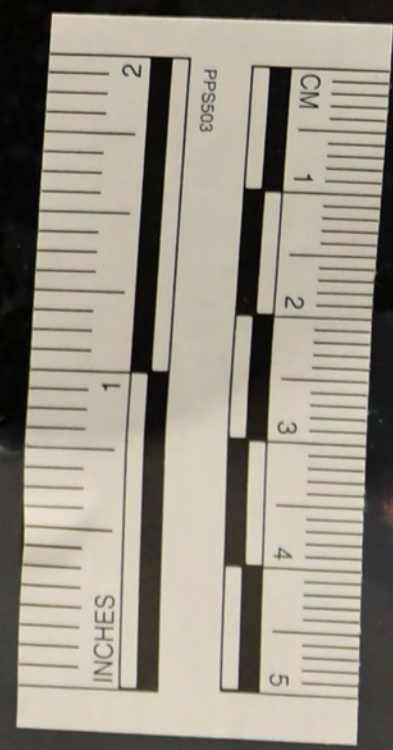
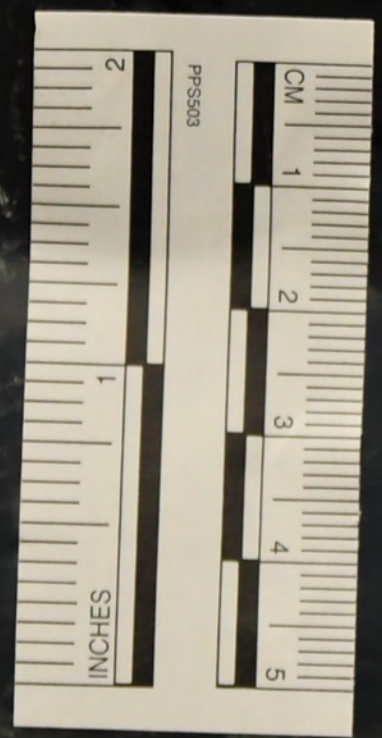
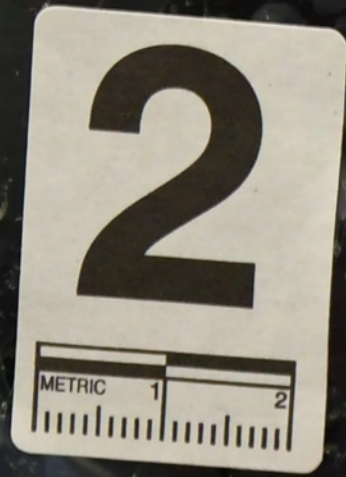
204

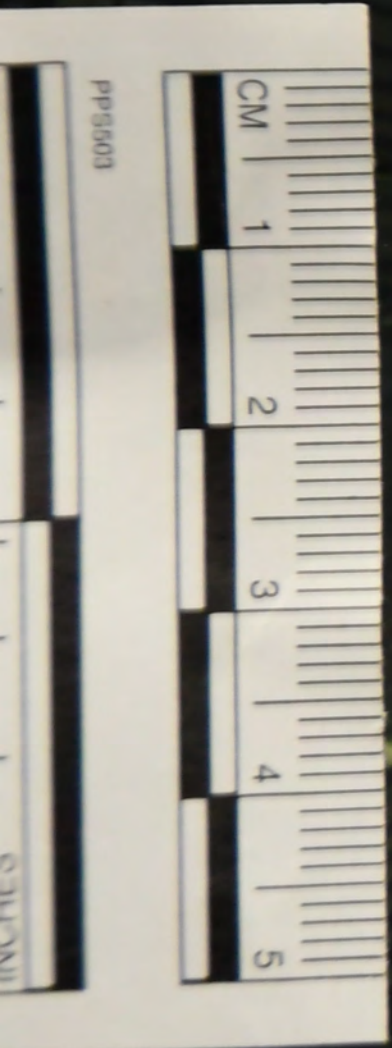
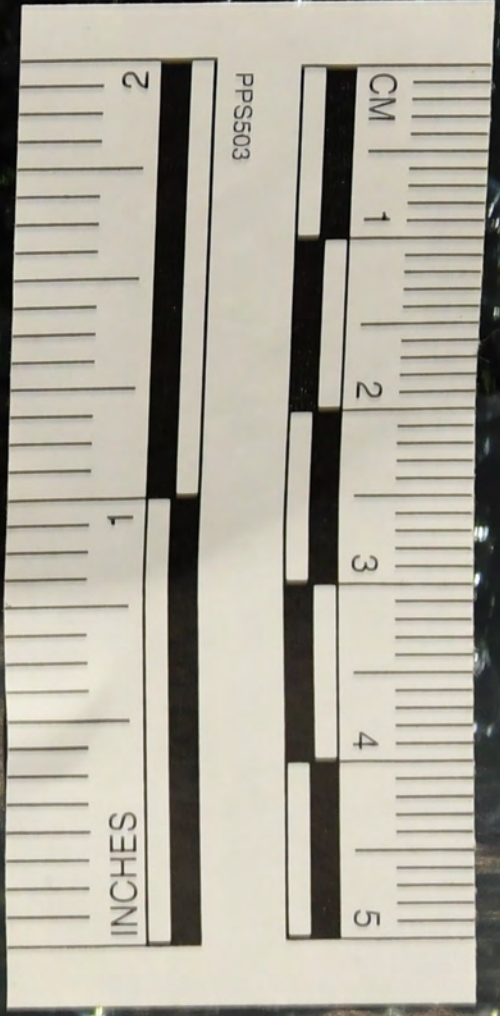
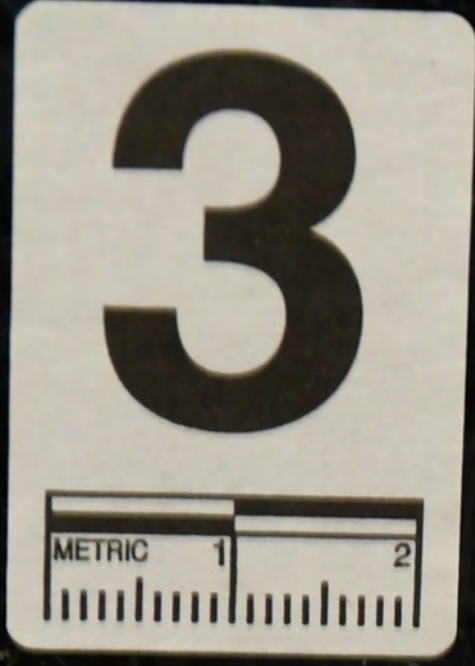


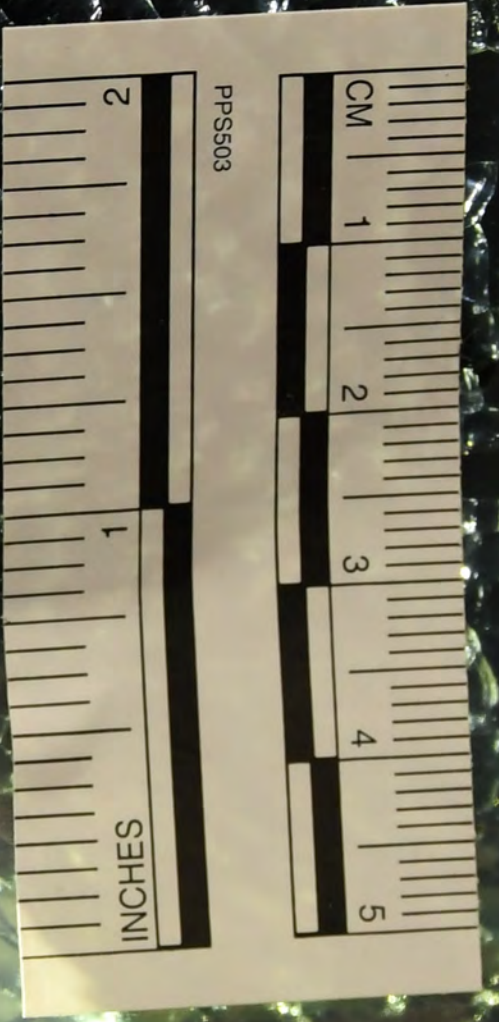
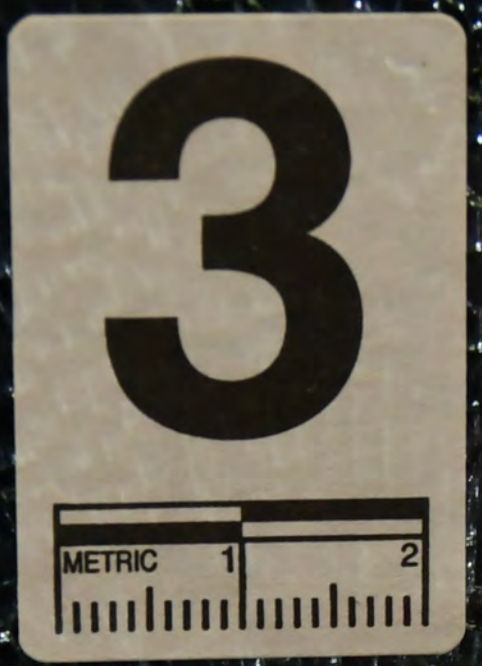
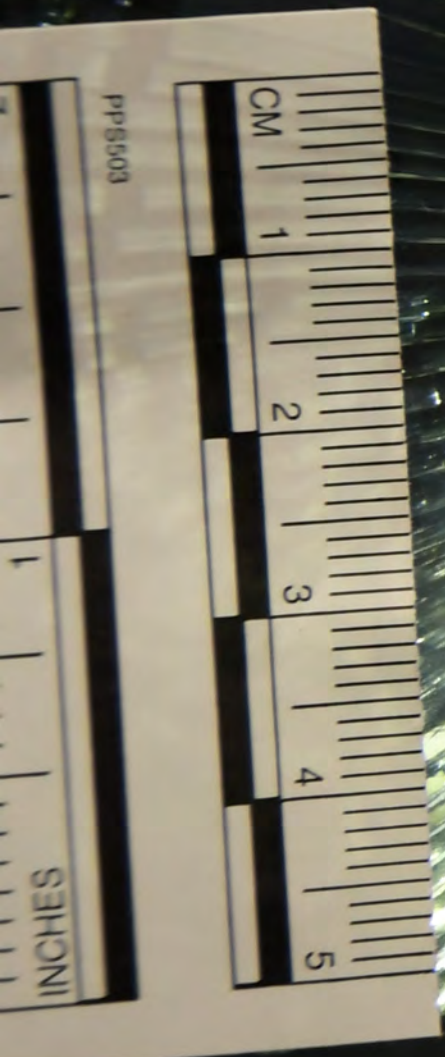
2

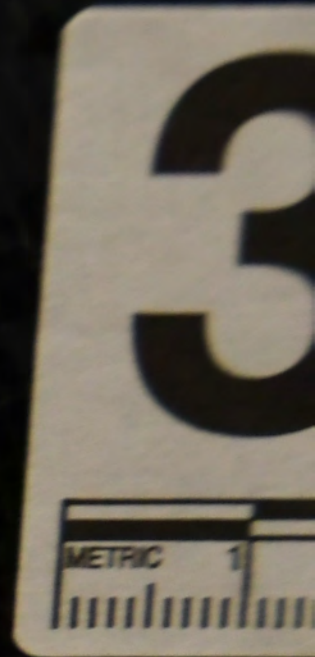
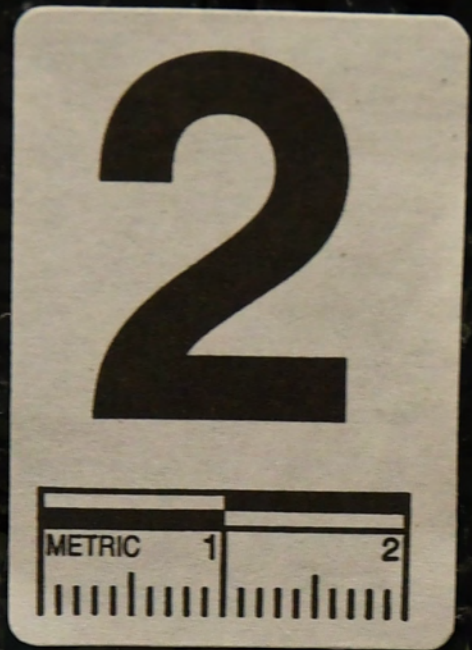
3

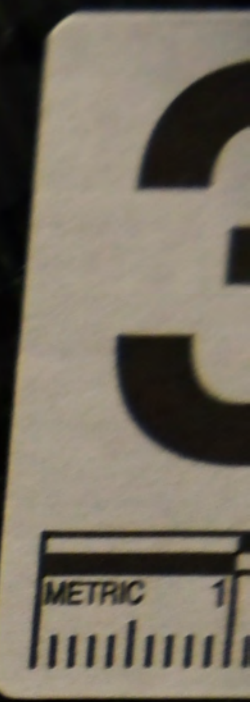
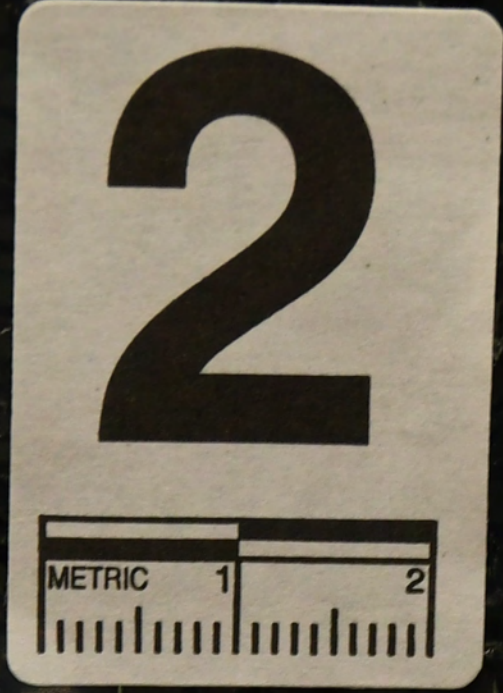


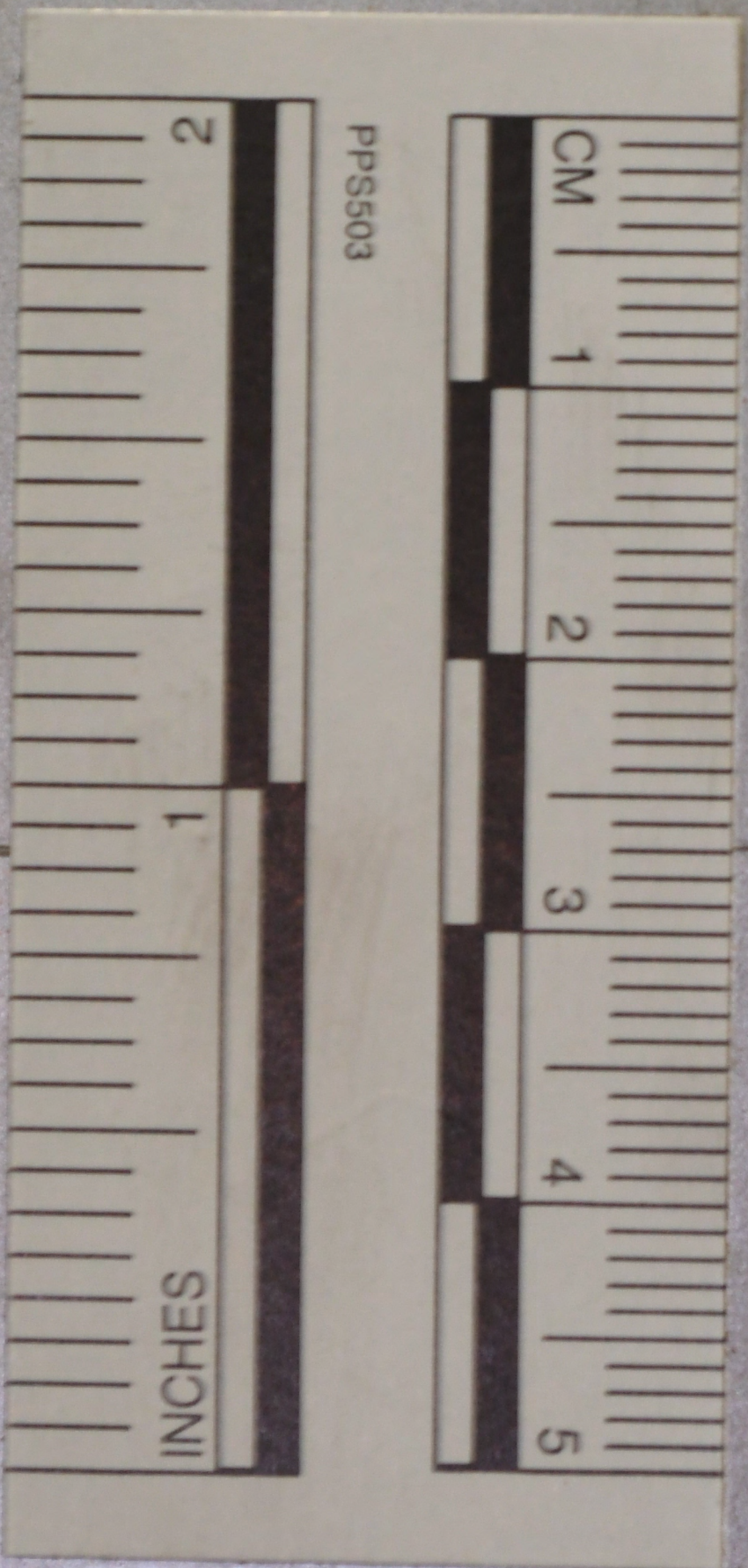
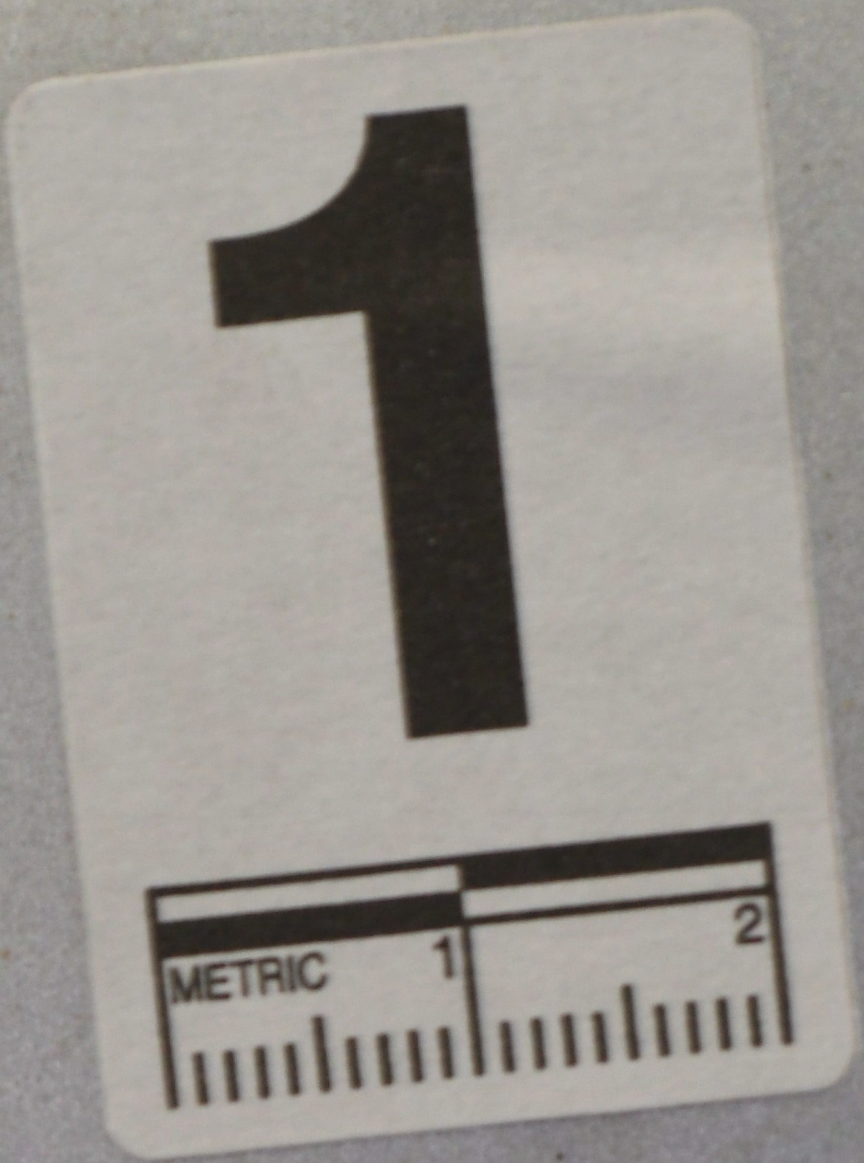




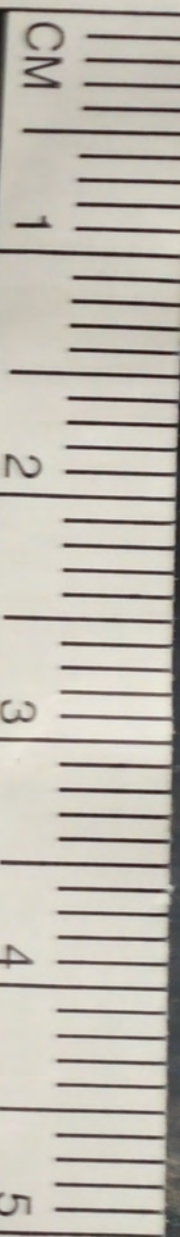
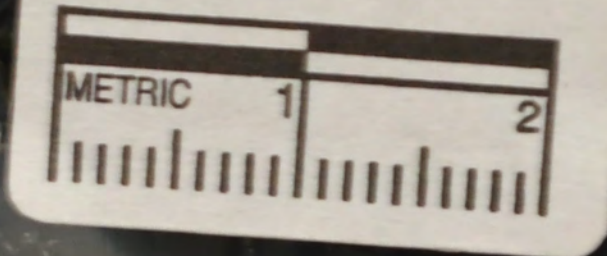




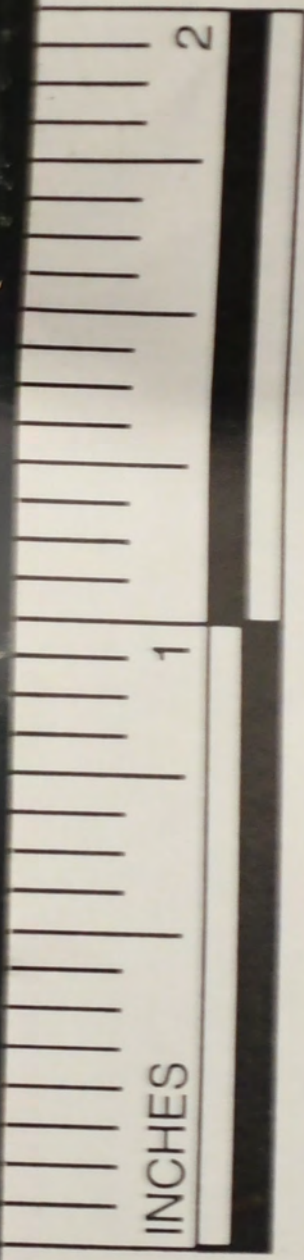




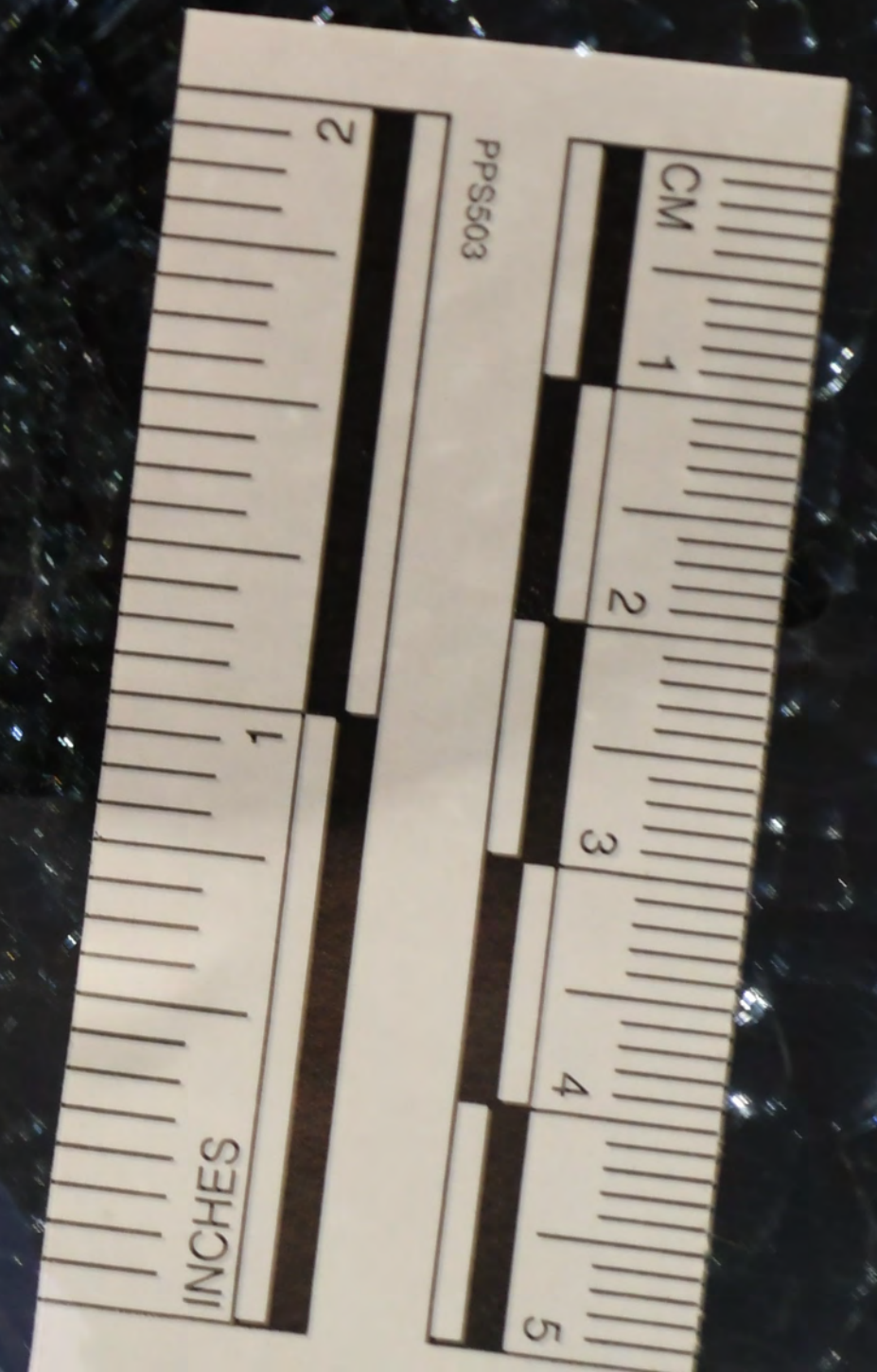
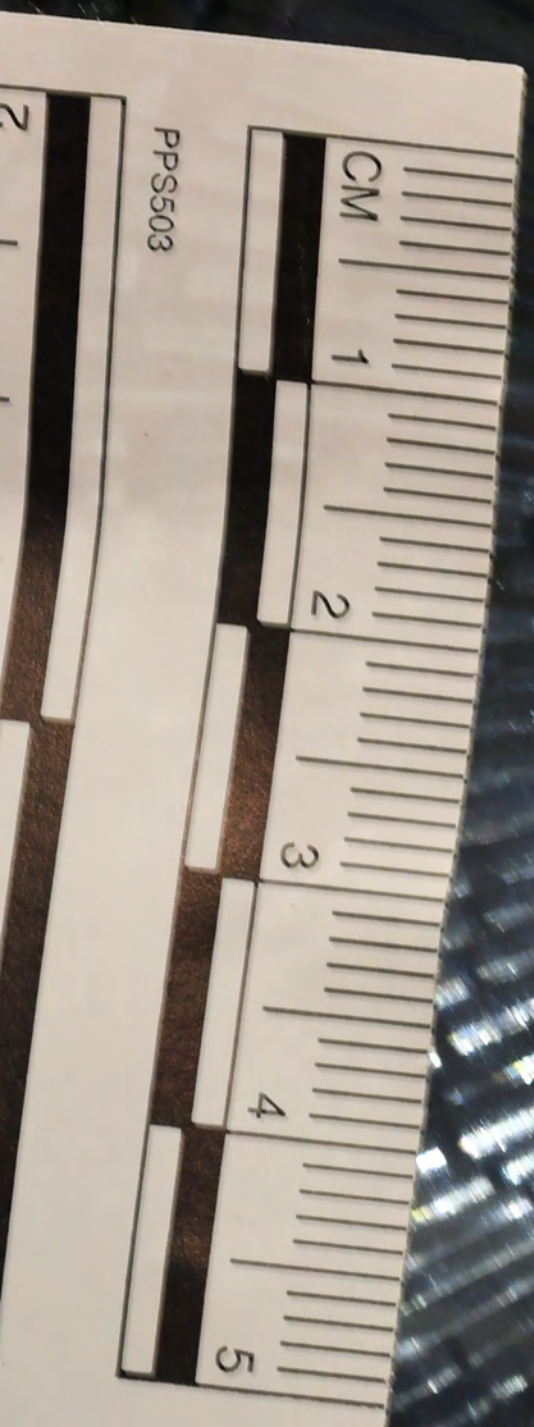
2



PPSS503



3





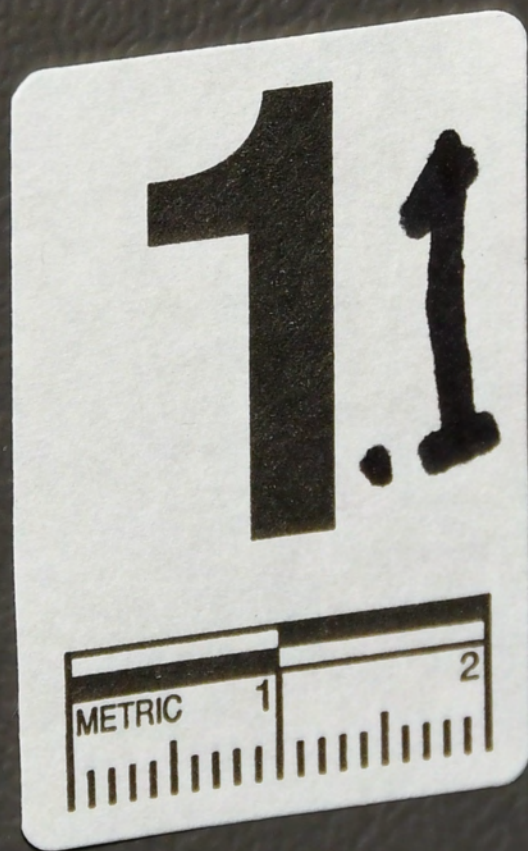
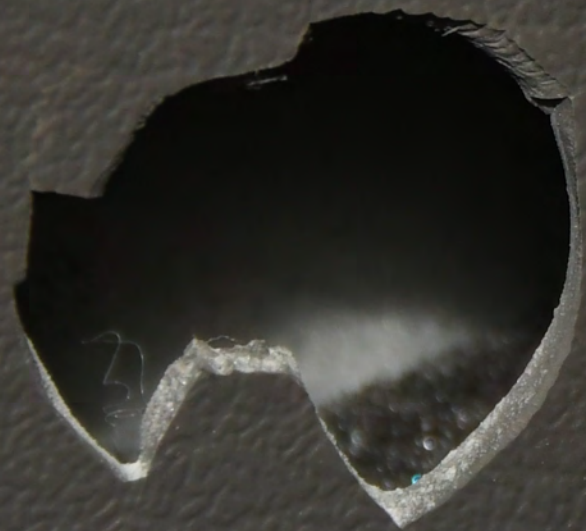




1.1

6
5
4
3
2
1
3
11
10
9
8
7
6
5
4
3
2
1
2
11
10
9
8
7

34
35





888-2345



3 9 10 11

CHEVROLET

RL 5072
02442A

SAFETY BELT USE CAN SAVE LIVES
PLEASE ALWAYS WEAR YOUR SEATBELT
AND PLEASE DON'T DRINK AND DRIVE

RL 5072
02442A







CHEVROLET



CELINA POLICE DEPARTMENT
MOBILE EMERGENCY
OPERATIONS CENTER

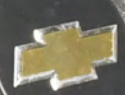
(419) 588-2348

PASSENGER AIR BAG

SUPERNOVA

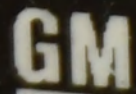
RPM X 1000

MPH



AIRBAG





MFD BY GENERAL MOTORS CORP.

08/05

GVWR
2903KG(6400LB)

GAWR FRT
1452KG(3200LB)

GAWR RR
1542KG(3400LB)

THIS VEHICLE CONFORMS TO ALL APPLICABLE U.S. FEDERAL MOTOR VEHICLE SAFETY STANDARDS IN EFFECT ON THE DATE OF MANUFACTURE SHOWN ABOVE.

1GNET16S866107693

TYPE: M.P.V.

MODEL: T15806

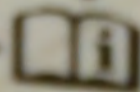
TPMU TIRE SIZE SPEED RTG

FRT P245/65R17 S

RR P245/65R17 S

SPA P245/65R17 S

SEE OWNER'S MANUAL



FOR MORE INFORMATION.

RIM

17X7J

17X7J

17X7J

COLD TIRE PRESSURE

210KPA(30PSI)

240KPA(35PSI)

240KPA(35PSI)



8 9 10 11 12 1 2 3 4 5 6 7

Sirchie No. PPS101 Rev. (2/19)

INCHES

43
42
41
40
39
38
37
36
35
34
33
32
31
30
29
28
27
26
25
24
23
22
21

10 11 12 13





38

37

36

35

34

33

32

31

30

29

28

27

26

25





31-

30-

29-

28-