



⚠ WARNING: NOT
A TOY. MISUSE OR
CARELESS USE
MAY CAUSE SERIOUS
INJURY OR DEATH.
BEFORE USING, READ
OWNER'S MANUAL.
AVAILABLE FREE FROM
UMAREX USA, FORT SMITH,
AR. MADE IN TAIWAN.
WWW.UMAREXUSA.COM

COLT.

UMAREX USA, FORT SMITH, AR. MADE IN TAIWAN.







FLOWMASTER

FLOWMASTER

WARNING

WARNING





RED
MIT
0

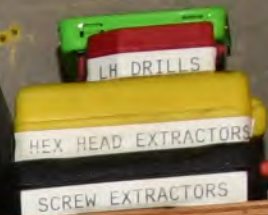
SAE 10W-30
Castrol
GTX
HIGH MILEAGE
PART NO. 150780

meijer
Purified
DRINKING WATER
40
GALLONS





HEAD
LIMIT
O



MILWAUKEE
FASTEST DURABLE LIGHTER
DRIVEN TO OUTPERFORM.
M18 FUEL
M18 FUEL
TOOL-ONLY
MILWAUKEE
2821-20

PROFESMAN

WILE PLISSY

MUDJUG
portable spittoons

Stoker's
Refillable Pocket
Can Inside

Cheaper
www.Cheaper.com

Receipts

40

Roll of paper towels

JZE 47
Ohio

Sharpie









EXIT

Ford

KGJ 1883
LUCAS 7-24

12,000 lbs.

12,000 lbs.

12,000 lbs.

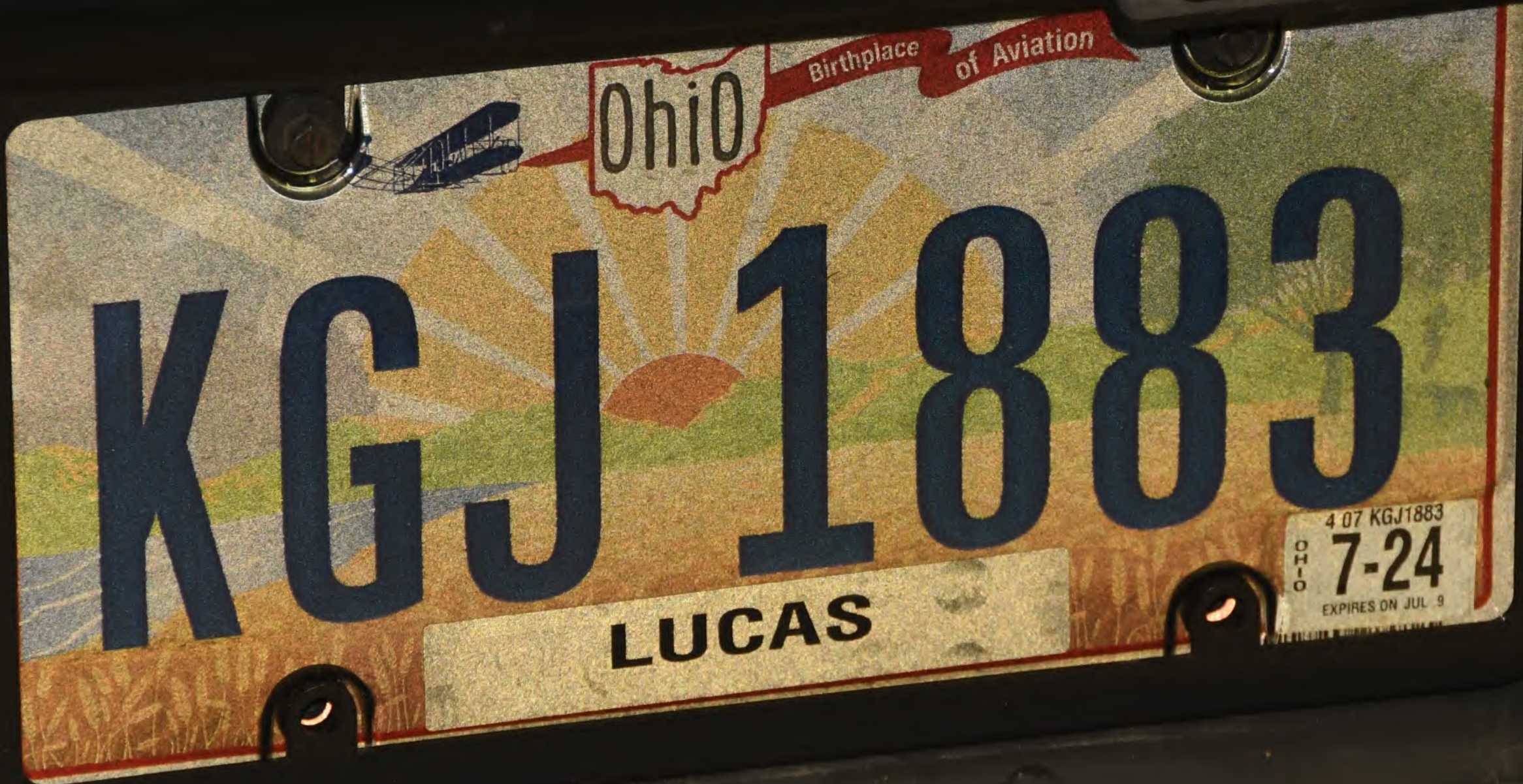
12,000 lbs.



Ohio
KGJ 1883

LUCAS

REGISTRATION
7-24



Ohio

Birthplace of Aviation

KGJ 1883

LUCAS

4 07 KGJ1883
OHIO
7-24
EXPIRES ON JUL 9













BOSCH

1FAHP2MK2FG183235





MFD. BY FORD MOTOR CO.

DATE: 07/15

FRONT GAWR: 1388 KG (3060 LB)

GVWR: 2586 KG (5700 LB)

REAR GAWR: 1216 KG (2680 LB)

THIS VEHICLE CONFORMS TO ALL APPLICABLE FEDERAL MOTOR VEHICLE SAFETY, BUMPER, AND THEFT PREVENTION STANDARDS IN EFFECT ON THE DATE OF MANUFACTURE SHOWN ABOVE.

VIN: 1FAHP2MK2FG183235

TYPE: Passenger Car

MAXIMUM LOAD = OCCUPANTS + LUGGAGE = 607KG/1340LB
OCCUPANTS = 5 TOTAL; 2 FRONT, 3 REAR

TIRE (FR): 245/55R18 103V

(RR): 245/55R18 103V

PRESSURE (FR): 240 kPa/ 35 PSI COLD

RIMS (FR): 18X8.0J

(RR): 18X8.0J

(RR): 240 kPa/ 35 PSI (C)LD



1FAHP2MK2FG183235

TRAILER TOWING - SEE OWNER GUIDE

EXT PNT: G1

INT TR | TP/PS | R | AXLE | TR | SPR | RC: 48 | DSO:

RW

Z

3A

J

GGPP

F0195

R0237

1201507293350

CMC

5U5A-5420472-AA



AND LOADING INFORMATION
SEE OWNERS MANUAL FOR ADDITIONAL INFORMATION
FORD MOTOR COMPANY

elite

1571

WINE

A black plastic tray containing a clear plastic cup with several coins (including a copper one), a brown bottle, and a white cable. The tray is mounted on the left side of the car's center console.

A black handgun, two magazines, and other items inside a car's center console. The items are resting on a patterned fabric. The handgun is a semi-automatic pistol with a black finish. One magazine is marked "GIBBS 21". A small white object, possibly a lighter or a small container, is also visible. The console is lined with a dark, textured material.



RANGEWEST



RANGEWEST





CE

Meijer
Purified
DRINKING
Water
40 Pack

