

Handwritten mark, possibly initials or a signature.

3E 36.0
SCENE
USA
ORC FORENSICS
#MCS2x2
500-557-8330
36.0
2
1
0
1
2

A white forensic evidence tag is placed in the corner of a grey, textured material. The tag is rectangular with a small hole punched in the center. It features a ruler at the top and bottom, and a central area with a black and white checkerboard pattern. The tag is labeled with 'ORC FORENSICS USA' and '#MCS2x2'. Handwritten in black ink are '3E 36.0' and '36.0'. A phone number '500-557-8330' is printed on the tag. The tag is positioned over a small hole in the material.

MADE FOR DIESELS
POWER SERVICE PS
Winterizable
-oz. Containers
Container

Fresh Stacks

⚠ WARNING
Keep up and locked while vehicle is moving unless bunk restraint is installed.

39.0
6E39.0



MADE IN GERMANY
POWER SERVICE PS

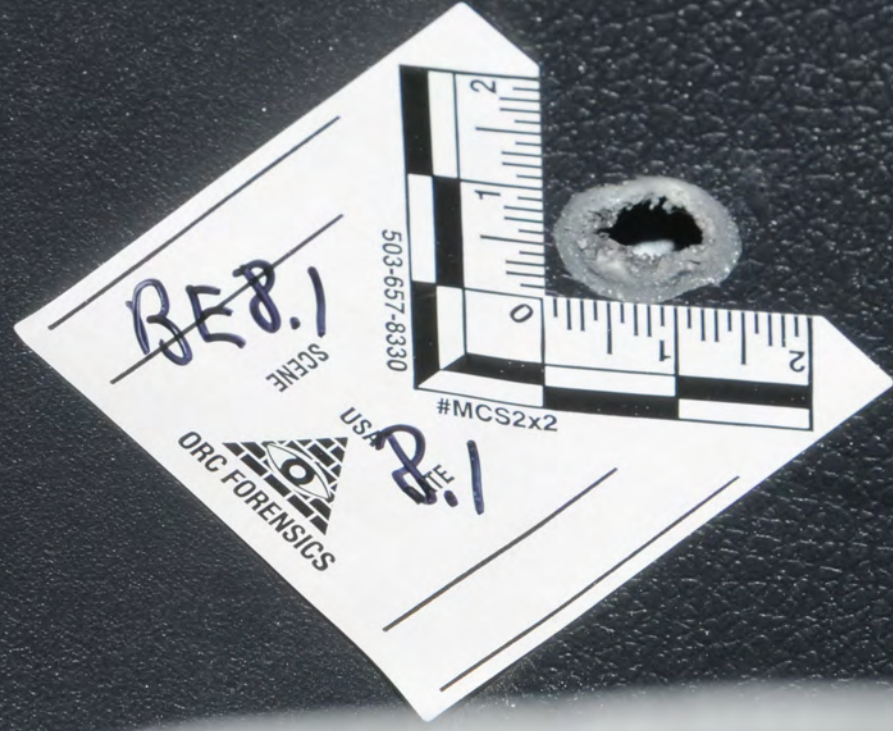
Keep up unless

BE39.0
39.0

BE37.0
37.0

BE32.0
38.0

BE40.0
40.0



BE8.1

SCENE

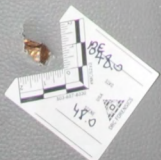
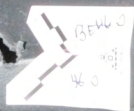
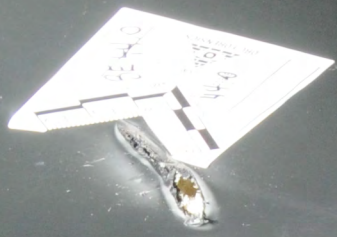
503-657-8330

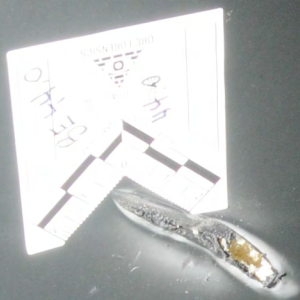
#MCS2x2

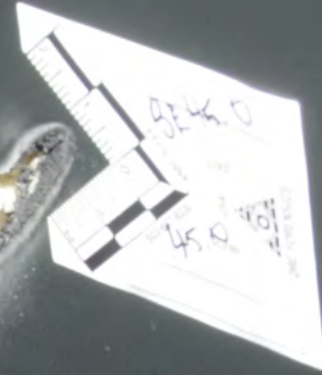
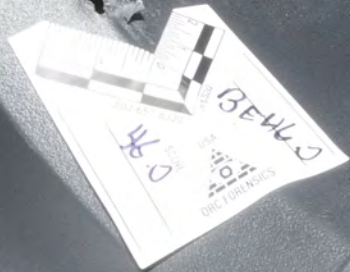
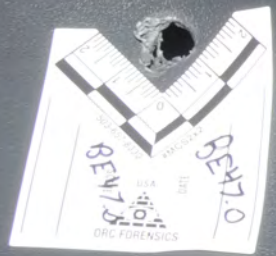
ORC FORENSICS

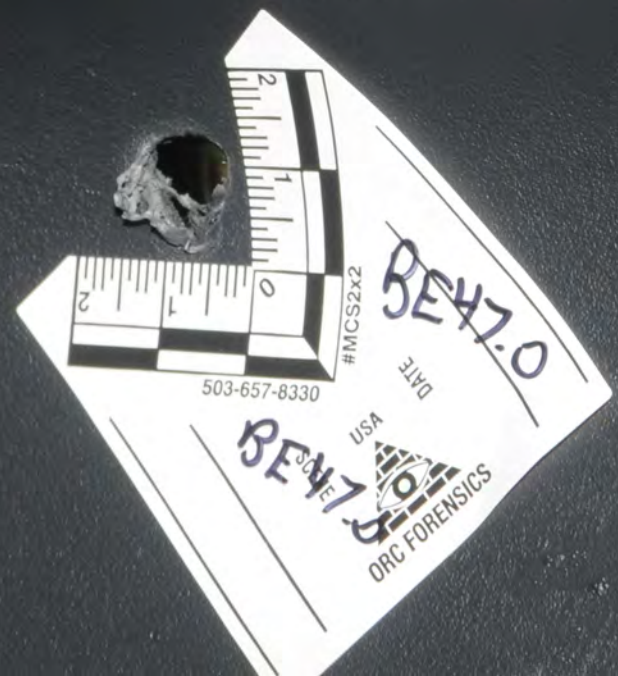
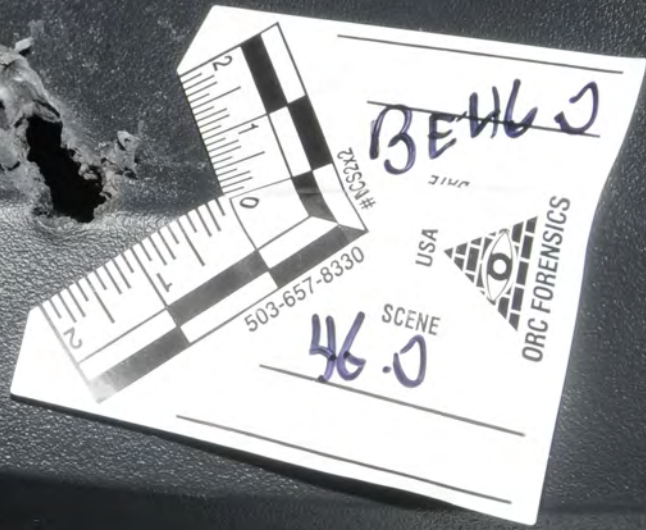
USA

18.1









503-657-8330

#MCS2x2

DATE

USA

ORC FORENSICS

SCENE

0.2x4

0.2x4.0



POLICE LINE DO NOT CROSS

POLICE PERSONNEL ONLY

POLICE



CARGOSMART

POLICE PERSONNEL
ONLY

POLICE
ENTRANCE - EXIT



GRAND CARAVAN

BUREAU OF
SCEN

CARGO SMART

CARGO SMART

GRAND CARAVAN

EXT

BUREAU
SCEN







AUG 09 23
021826N

GRAND CARAVAN

DODGE

SXT



COLORADO
2005
AUG 09 23
021826N

GRAND CARAVAN

DODGE



Temporary **COLORADO** Registration

2D4GP44KX5R166127	BLUE	
2005	CARAVAN	
AUG	09	23
<small>MONTH</small>	<small>DAY</small>	<small>YEAR</small>
021826N		

SAFEGUARD
DOT-22 00-MATCH
ABS 04
PH
12 L
SL

GRA







POLICE
ENTRANCE - EXIT

DO NOT CROSS

surf
ONN.
Lap Desk
with Wireless
Portable Charger

make
fresh



Beauty
st.

Little Troop

Little Troop

Black Air

surf

onn.
Lap Desk
Portable Workspace

Cubba

Cubba

Apple Appin



onn.
Laptop Desk
Portable Workspace

Cubba
Cubba

APPLE APPLES

Colgate
Max Fresh



POLICE
ENTRANCE - EXIT

Beautyrest.
Beautyrest.
Beautyrest.

1 1/2 Size
KINDA CHIPS
2 1/2 Size

TOOLBOX
FLASHLIGHT
MULTI-TOOL

COOLER

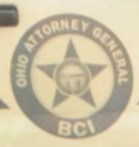
COOLER



POLICE_L
ENTRANCE - EXIT



POLICE



NOTICE
IN THE EVENT OF AN
ACCIDENT
OR
BREAKDOWN
TOW TO:
**PREMIER
AUTOMALL**
1815 W. Fremont Street
Midvale, Utah 84046
801-552-1234









CARGOSMART.



Beautyrest.

Beautyrest.

Smart
GUESTREST AIRBED
WITH BUILT IN PUMP
QUEEN
PILDTIGHT