





















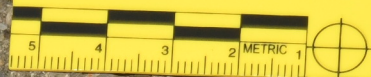


1

2

3





1





3

2

OPS THEFT CHIP







3

A yellow evidence marker with the number '3' in black. Below the number is a small black and white diagram of a rectangular object with a vertical line extending from its right side. A small, light-colored object, possibly a bullet casing, is positioned to the left of the diagram.

2

A yellow evidence marker with the number '2' in black, partially visible in the bottom right corner of the image.