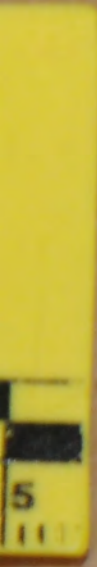




1





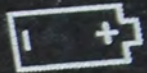
M&P₉

**WASHINGTON COUNTY
SHERIFF**

M2.0







TLR-1
STRA

WIN
9MM LUGER
WIN







ERIE







SHERIFF





SHERIFF



SETMA

SHERIFF











V603.21 Front Plate
V603.21 Fax to register
V603.15 Fax to Dim
V610.11 OIL S
V610.12 No OL
V610.14 DA avl temp
V610.16 FAA Supp
V610.18 Truck



2 3 4 5 6
RPM X 1000

Ford
SILVER

PUSH ON/OFF

Moisturizing Hand Sanitizer
KILLS 99.9% OF GERMS
12 FL OZ / 354 mL

4403-21 Front Panel
4403-11 Front Panel
4403-15 Front Panel
4403-12 Front Panel
4403-14 Front Panel
4403-16 Front Panel

771000







SETINA
MFG. CO.
1998





WARNING

- BEFORE BEGINNING PARTITION INSTALLATION, ALL VEHICLES MUST BE UNLOCKED FOR SIDE CURTAIN AIRBAGS.
- VEHICLES EQUIPPED WITH SIDE CURTAIN AIRBAGS MUST USE "AIRBAG COMPATIBLE" PARTITION MOUNTING SYSTEM.
- DO NOT TRANSFER PARTITION TO SIDE CURTAIN AIRBAG EQUIPPED VEHICLE USING ROOF UPPER PILEL PANEL FROM NON-AIRBAG VEHICLE.
- DO NOT INSTALL PARTITION INTO SIDE CURTAIN AIRBAG EQUIPPED VEHICLE WITHOUT JDM TRANSPORT KIT.
- DO NOT ATTACH AIRBAG MOUNTING BRACKET TO SIDE CURTAIN AIRBAG.
- DO NOT ATTACH AIRBAG MOUNTING BRACKET TO SIDE CURTAIN AIRBAG.
- DO NOT ATTACH AIRBAG MOUNTING BRACKET TO SIDE CURTAIN AIRBAG.













TTL Red
1000
OFF
ON
MODE
B30
B32
B34
B36
B38

B26
B24
B22
B20
B18
B16

WARNING
BEFORE BEGINNING
UNUSUAL WEAR OR
ADJUST
VEHICLE EQUIPMENT
CALL FOR SERVICE
P212K

RECYCLE BOTTLE
WASH CAP ON



84-16

RECYCLED BOTTLE
250
Nutrition Facts
20 FL OZ
591 mL

WHILEN

XCIVGEO
DS1HSP

WHILEN
NAV / HI / T1
1 2 3 4 5

7.0300.COM
0 1 2 3 4 5 6 7 8 9

IBBY









