



CAUTION: High temperature. Keep electrical cords, drapery, and other furnishings at least 3 feet (0.9m) from the front of the heater and away from the side and rear. Do NOT operate without feet attached. Read instructions carefully.
 PRECAUCIÓN: Altas temperaturas. Mantenga los cables eléctricos, cortinas y otro mobiliario alejado al menos 3 pies (0.9m) del frente del calefactor y de la parte posterior. NO opere sin colocar los pies. Lea el manual de instrucciones antes de usar este calefactor.

CAUTION: USE SUPPLY WIRES SUITABLE FOR 105 °C.
DO NOT LOCATE AGAINST WALLS OR BEHIND DRAPES OR FURNITURE WHEN IT IS FREE-STANDING USED.
WARNING: RISK OF FIRE-KEEP COMBUSTIBLE MATERIAL AWAY FROM FRONT OF HEATER.
PRECAUCIÓN: UTILIZA CABLES DE SUMINISTRO ADECUADOS PARA 105 °C.

METRIC 1 2 3 4
BI 6.0

NO UBICAR CONTRA LAS PAREDES O DETRÁS DE CAJONES O MUEBLES CUANDO SE UTILICE DE FORMA LIBRE.
ADVERTENCIA: RIESGO DE MATERIAL COMBUSTIBLE CONTRA INCENDIOS SI LOS DEL FRENTES DEL CAIEFACTOR.

METRIC 1 2 3 4 5
BI 5.0
INCHES 1 2

ELECTRIC SHOCK MATCH WIDE BLADE
FULLY INSERT
EVITAR EL CHOQUE ELÉCTRICO ENCHUFE
ENCHUFE A LA RANURA ANCHA, INSERTELO

FOR DOMESTIC USE ONLY
PARA USO DOMÉSTICO SOLAMENTE



CAUTION
RISK OF ELECTRIC SHOCK
DO NOT OPEN
NO USER-SERVICEABLE PARTS INSIDE

PRECAUCIÓN
RIESGO DE DESCARGA ELÉCTRICA
NOTA PARA EL USUARIO
LAS PARTES INTERNAS NO DEBEN SER
MANIPULADAS POR EL USUARIO



SA1965A

SA 1965A
8118

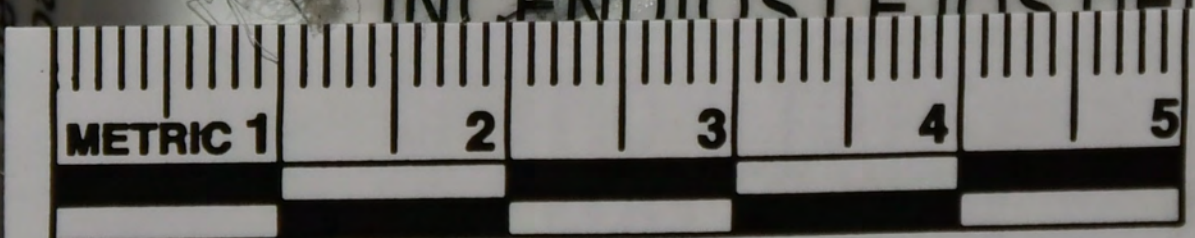
12

CAUTION: High temperature, keep electrical furnishings at least 3 feet (0.9m) from the front, side and rear. Do NOT operate without instruction manual before using this heater.
PRECAUCIÓN: Altas temperaturas, mantenga cortinas y otro mobiliario alejado al menos 3 pies del frente y los lados y la parte posterior. Lea el manual de instrucciones antes de usarlo.

WARNING: RISK OF FIRE.
FROM FRONT OF HEATER.
PRECAUCIÓN: UTILIZA CABLES DE SUMINISTRO ADECUADO PARA 105 °C.



NO UBICAR CONTRA LAS PAREDES O DETRÁS DE CAJONES O MUEBLES CUANDO SE UTILICE DE FORMALIBRE.
ADVERTENCIA: RIESGO DE MATERIAL COMBUSTIBLE CONTRA INCENDIOS LEJOS DEL FRENTE DEL CAIEFACTOR.



BI 5.0

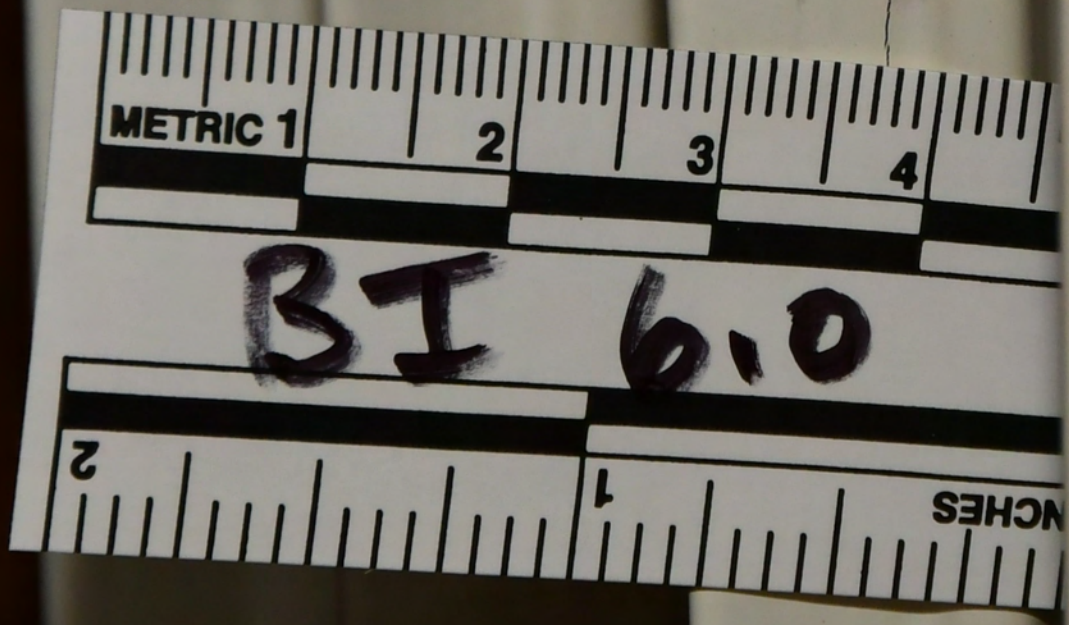


ELECTRIC SHOCK MATCH WIDE BLADE FULLY INSERT
EVITAR EL CHOQUE ELÉCTRICO ENCHUFE ANCHO A LA RANURA ANCHA, INSÉRTELO

PARA USO DOMÉSTICO SOLAMENTE

CAUTION RISK OF ELECTRIC SHOCK DO NOT OPEN NO USER-SERVICEABLE PARTS INSIDE





METRIC 1

2

3

4

BI 6.0

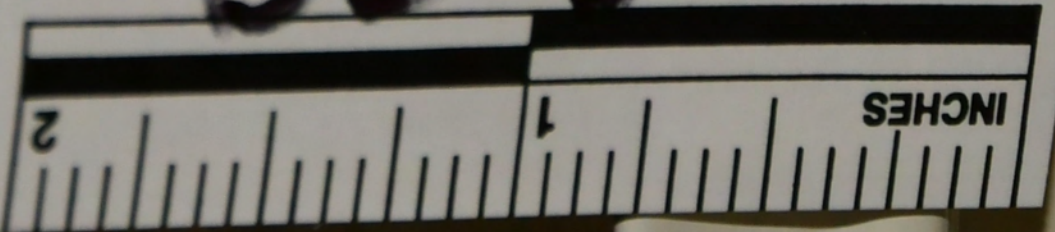
INCHES

1

2



BI 6.0





A black, rectangular coffee table with a smooth top surface and four legs. On the table, there is a clear plastic jar with a red lid filled with colorful candies, a wooden spatula, and a white stick. A small white label is attached to the front edge of the table.

A wooden shelf mounted on a wooden cabinet. The shelf holds a black card holder with a white card featuring a red heart and a spiral design, and a stack of white cards. To the right, a portion of a plate with a floral pattern and a stack of clear plastic cups are visible.

A blue and white box for 'TOPFIN' air pump, sitting on a wooden surface. The box features an image of the air pump and the text 'TOPFIN Air Pump'.

A colorful, zig-zag patterned blanket draped over the back of a grey sofa. The colors include yellow, green, orange, and white.

A grey fabric sofa with a wooden frame. A colorful blanket is draped over the backrest. The sofa is positioned against a wooden wall.

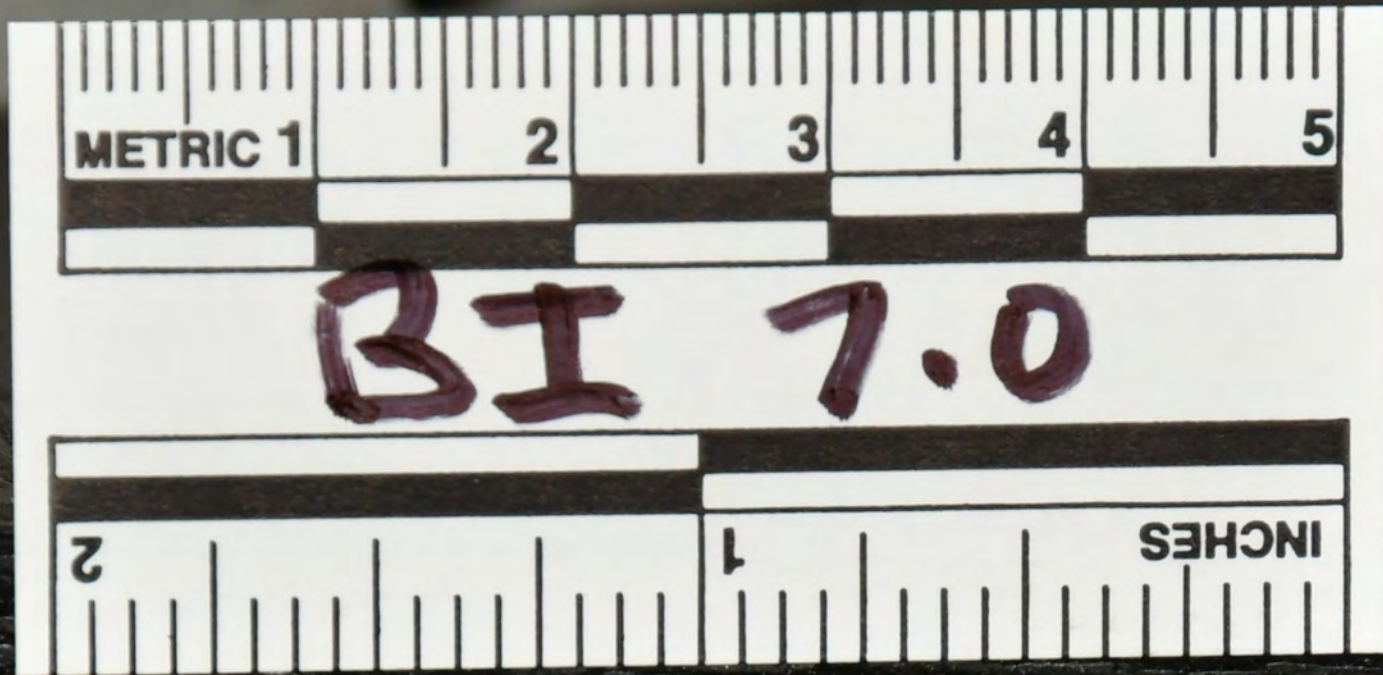
A collection of items on the left side of the room, including a red plastic crate, a black vacuum cleaner, and a wooden chair. A blue bag is also visible on the floor.



METRIC 1 2 3 4 5
BI 7.0
INCHES 1 2



Part 1









160
CALORIES
PER CAN

No. 1

No. 1

JULY





Brisk
ICED TEA

Fanta
Fanta Zero

Fanta
Fanta Zero

Fanta

CANADA DRY
ZERO SUGAR
GINGER ALE

MOUNTAIN DEW

16



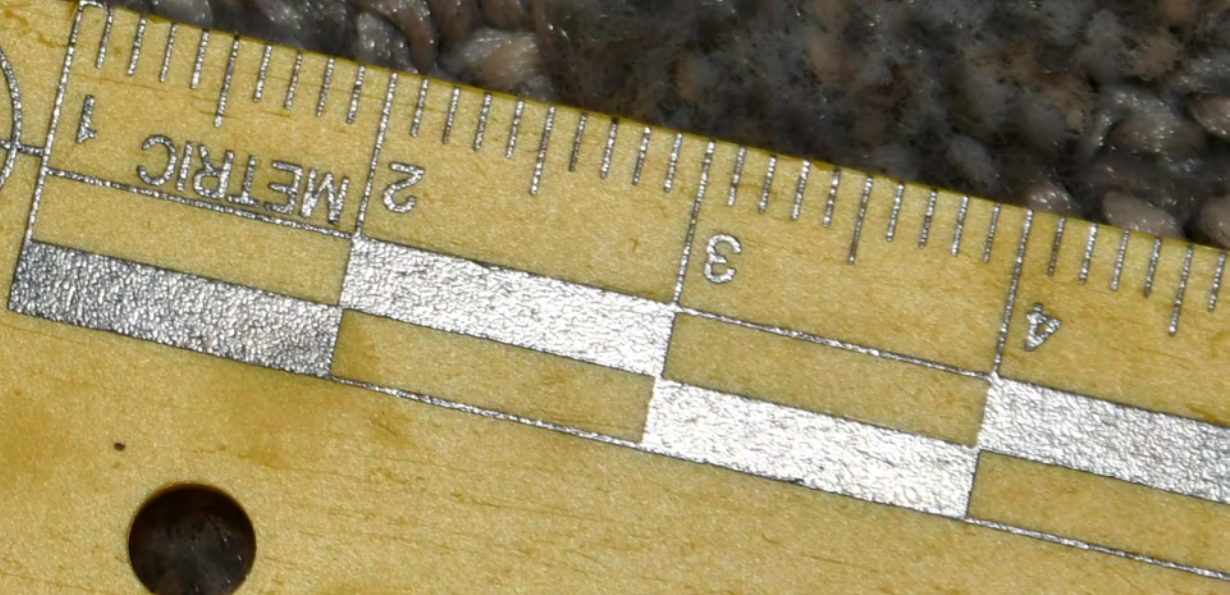
S&W
MUNGER

METRIC 1

METRIC 1

1

2



30/150W/C

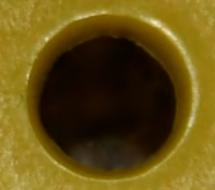
3

5.5 REAR P
+P
9 MM LUGER



METRIC 1 2 3 4

METRIC 1 2 3 4 5

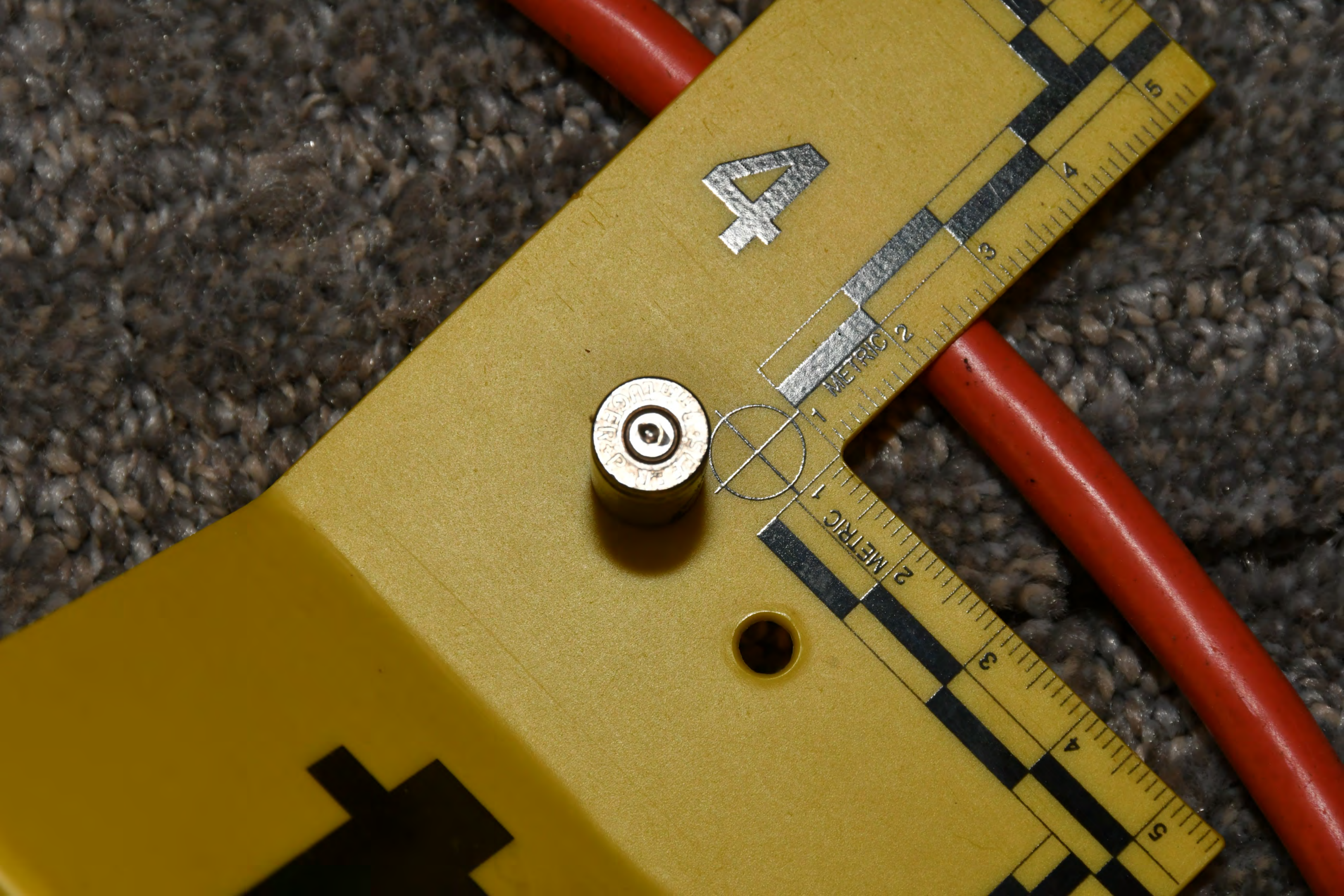


57



Q





4





9





157
S&W

7

METRIC
1

METRIC
2

2

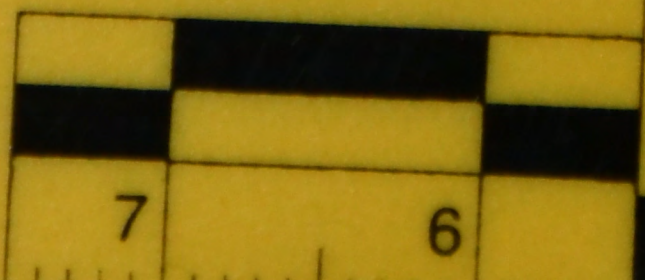
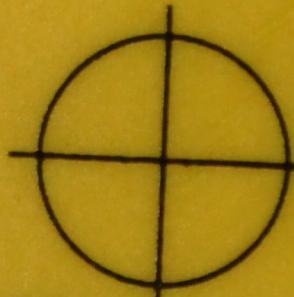
3

4

5

6

7





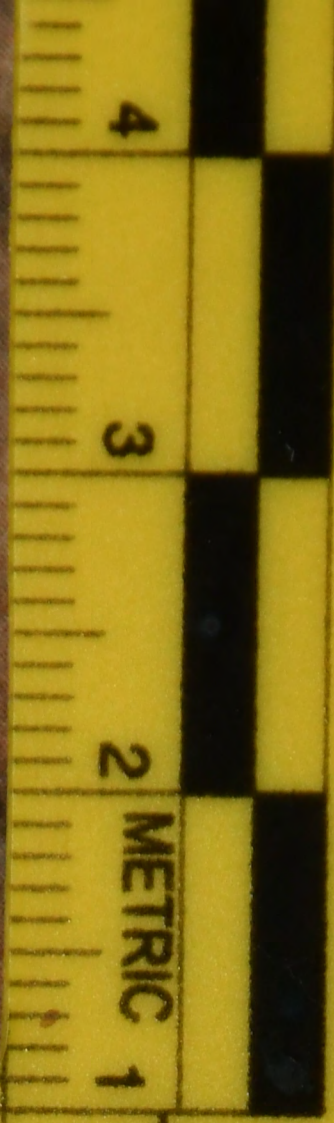
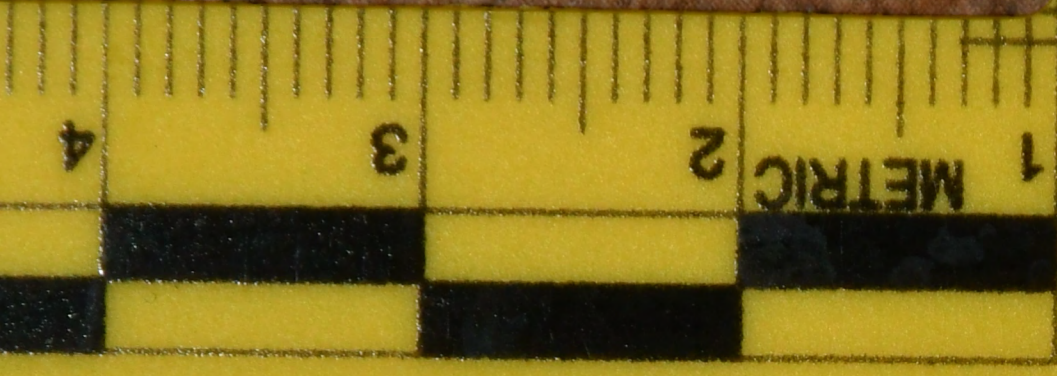
19

1 METRIC 2

2 METRIC 1



91



16

