



BI 60



2160

Getac

POLICE

BI 7.0

A



POLICE

BI 7.0



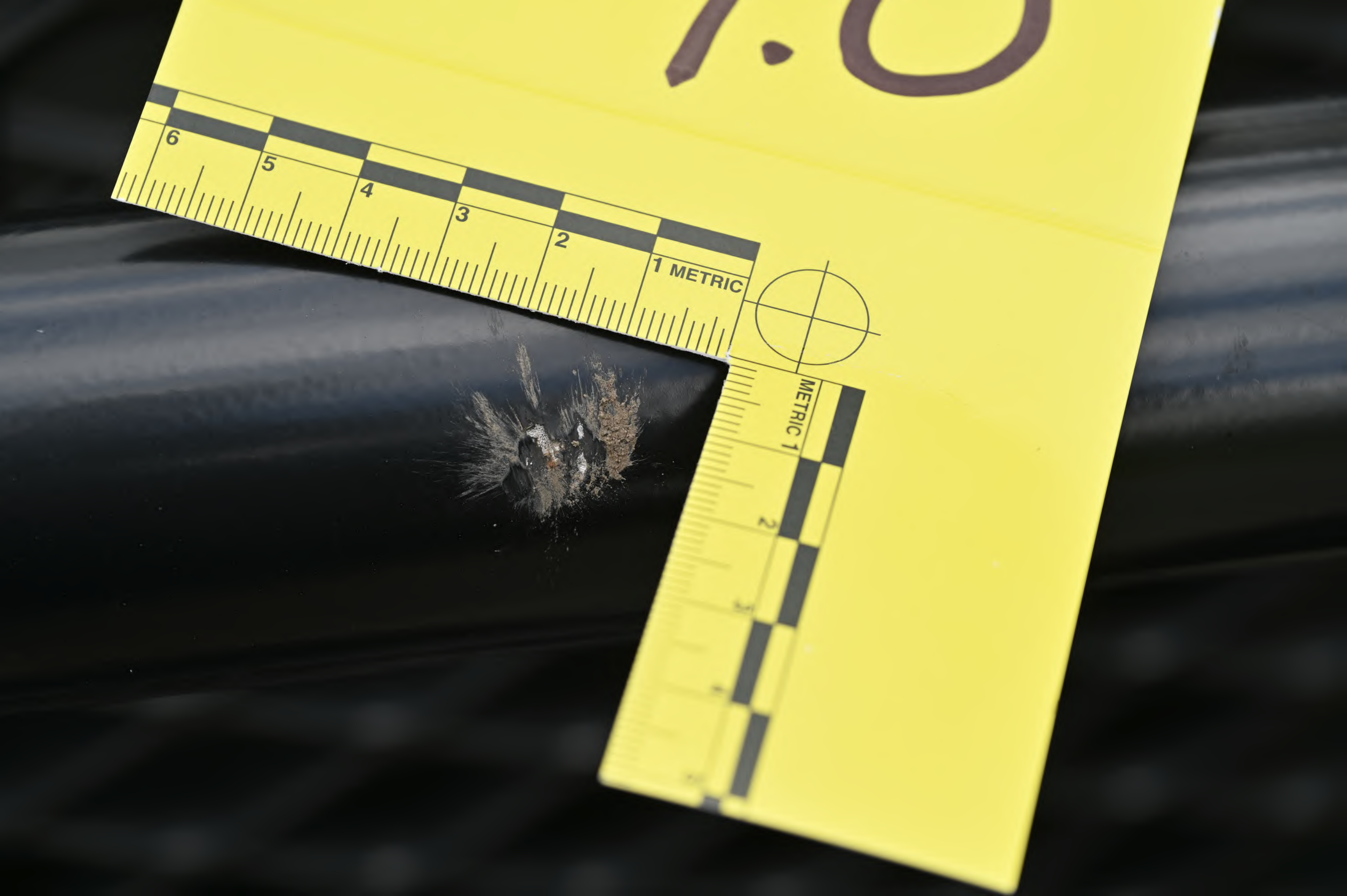
MA

ed

7.0



METRIC 1



KEN POLICE

SETINA



59

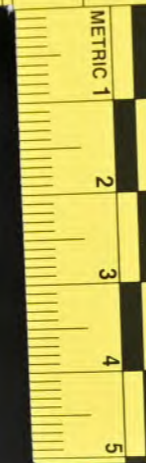
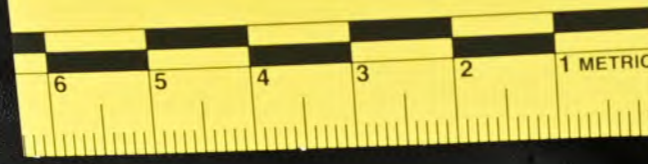
59



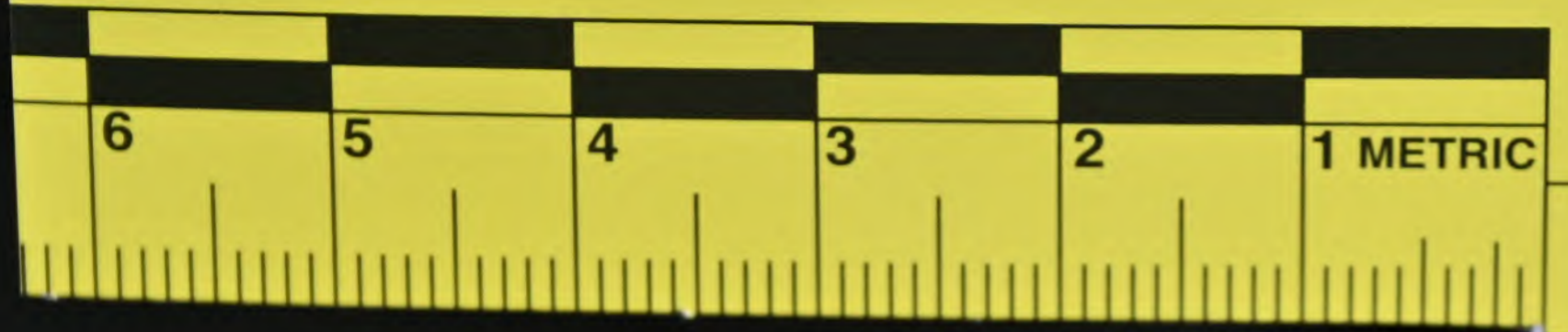
BI 8.0

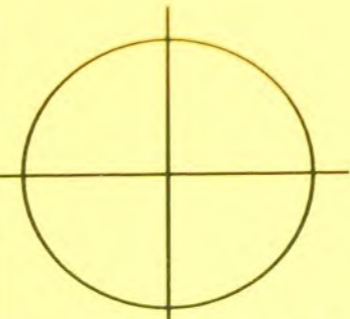
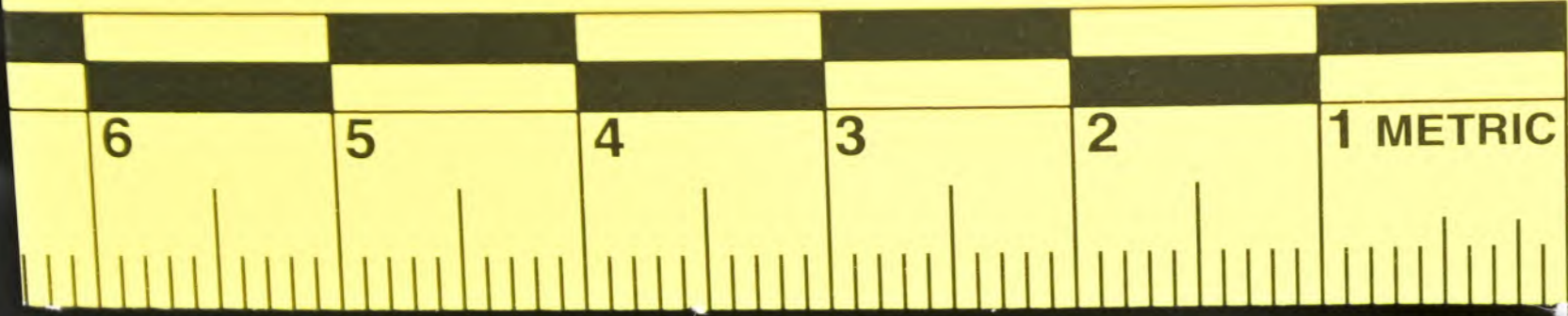


BI 8.0



8.0





A

BI

8.0



MFD. BY FORD MOTOR CO.

DATE: 02/24

GVWR: 2932 KG ( 6465 LB)

FRONT GAWR:

REAR GAWR:

1383 KG ( 3050 LB)

WITH 1692 KG ( 3730 LB)

WITH

255/60R18 108V

TIRES 255/60R18 108V

TIRES

18x8.0J

RIMS 18x8.0J

RIMS

AT 250 kPa/ 36 PSI COLD AT 260 kPa/ 38 PSI COLD

THIS VEHICLE CONFORMS TO ALL APPLICABLE FEDERAL MOTOR VEHICLE SAFETY STANDARDS IN EFFECT ON THE DATE OF MANUFACTURE SHOWN ABOVE.

VIN: 1FM5K8AB3RGA28860

TYPE: MPV

F0353  
T0319



EXT PNT: UM

IRC: 44 DSO:

WB

INT TR

TP/PS

R

AXLE

TR

SPR

119

F6

L

3C

U

PPJJ

1202402074527

UTC 5USA-1520472-BA

WARREN  POLICE

59

POLICE INTERCEPTOR

FLEX FUEL AWD

CRIME SCENE





BI 9.0



FOLD DOWN FLAP  
BI 9.0





660

8190

CAUTION

BI 9.0



660





660

CAUTION

FOLD DOWN FLAP  
A  
BI  
10.0





FOLD DOWN FLAP  
A  
BI  
10.0



FOLD DOWN FLAP  
A  
BI  
10.0

A yellow evidence marker is placed on a grey metal surface. The marker has the handwritten text "BI" on the top line and "10.0" on the bottom line. A ruler is visible at the bottom of the marker, showing a scale in inches. The marker is positioned next to a hole in the metal siding.



FOLD DOWN FLAP

A

BI  
10.0

6 5 4 3 2 1

METRIC 1 2 3 4 5





CALL 911  
POLICE

CITY OF  
2010  
WARNING



WARREN POLICE  
59

BI 20

BI 30

BI 40

BI 10



BI 1.0





BI 1.0