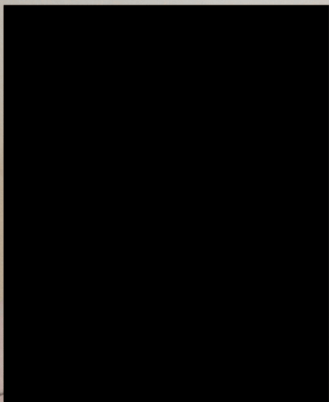
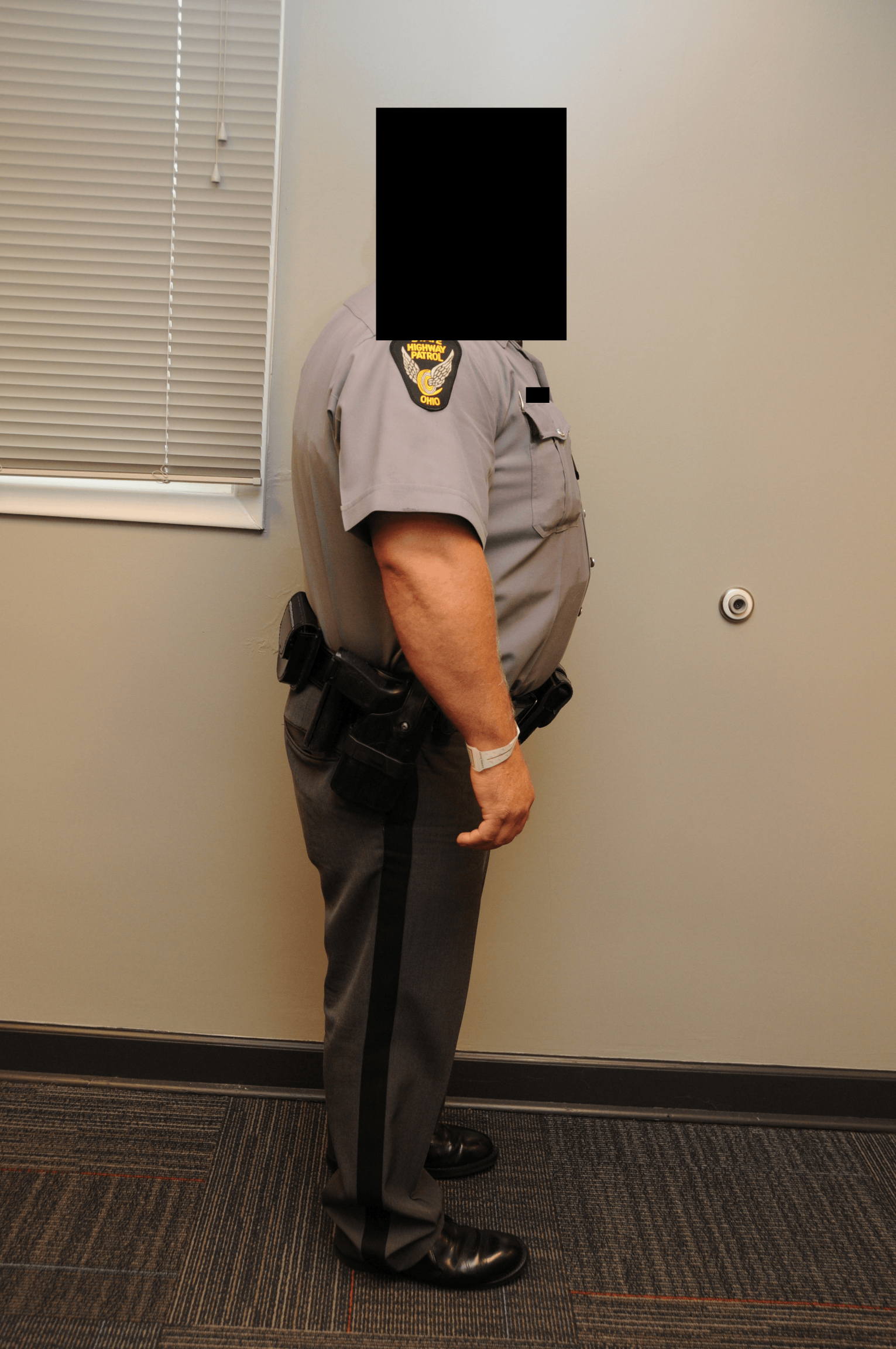


STATE  
HIGHWAY  
PATROL  
OHIO







OHIO  
HIGHWAY  
PATROL



[REDACTED]









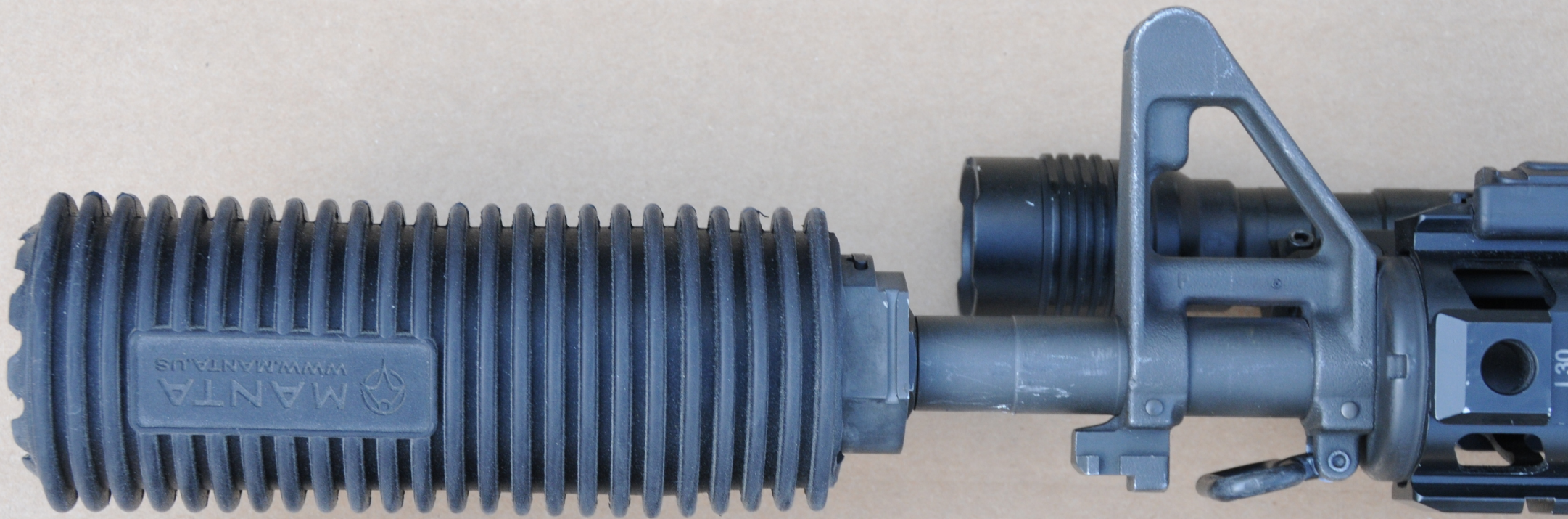


SIG SAUER SIGM400

SIG SAUER INC.  
EXETER-NH-USA







CLASS 1 LASER PRODUCT  
This product complies with  
21 CFR, Part 1040.10,  
1040.11 and  
1040.10-1040.11

NV

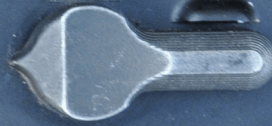


SIG SAUER SIGM400

SIG SAUER INC.  
P.O. BOX 1000  
ROCKFORD, IL 61105-1000  
USA



[REDACTED]







EOTECH

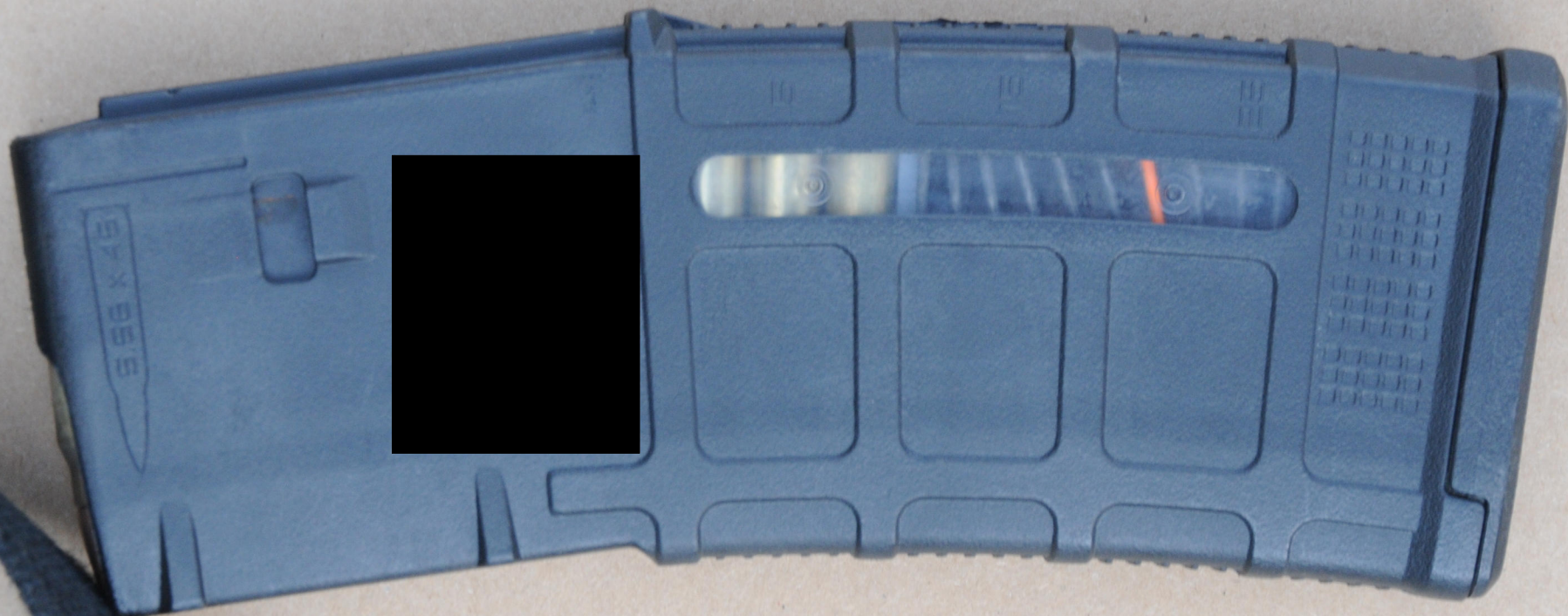
DOWN

RIGHT

R20





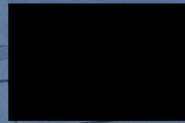


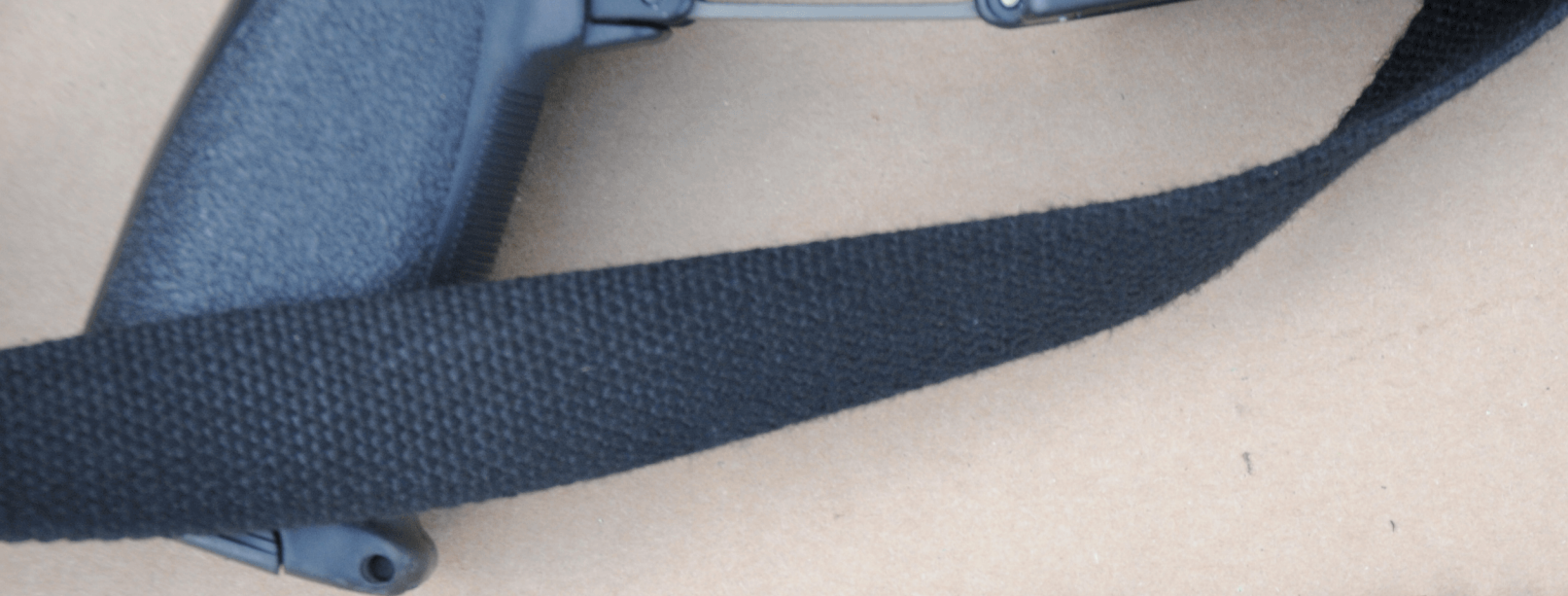




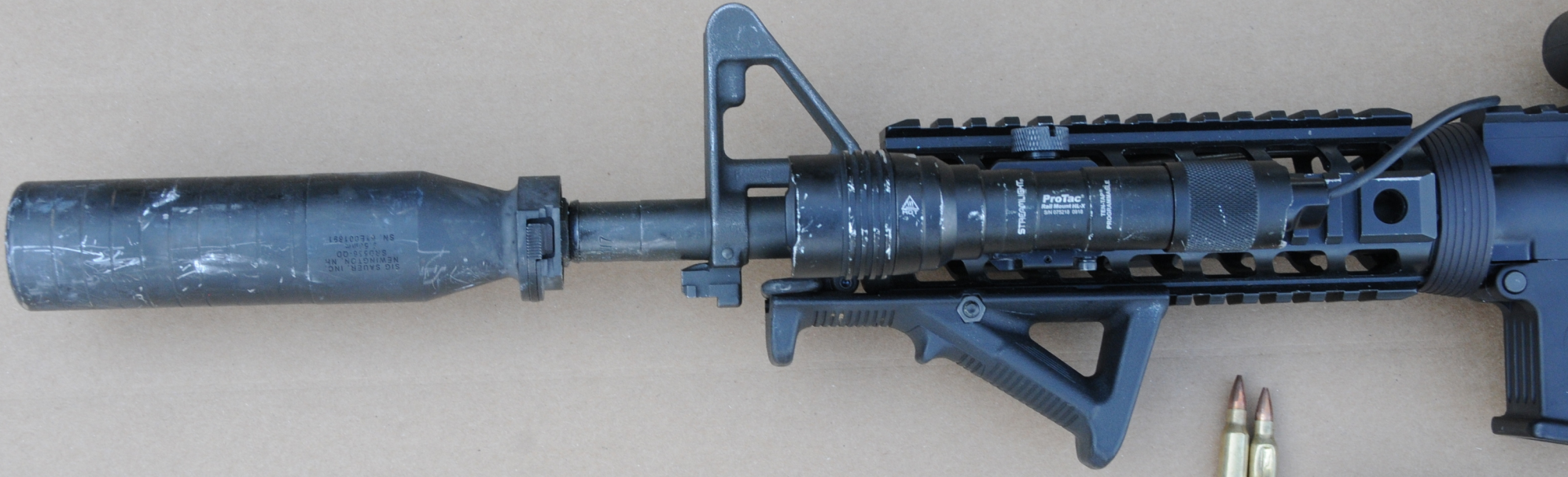
BIOTECH

R20  
R22  
R24  
R26  
R28









SIG SAUER, INC.  
NEWINGTON, NH  
830516 00  
SN 14001891

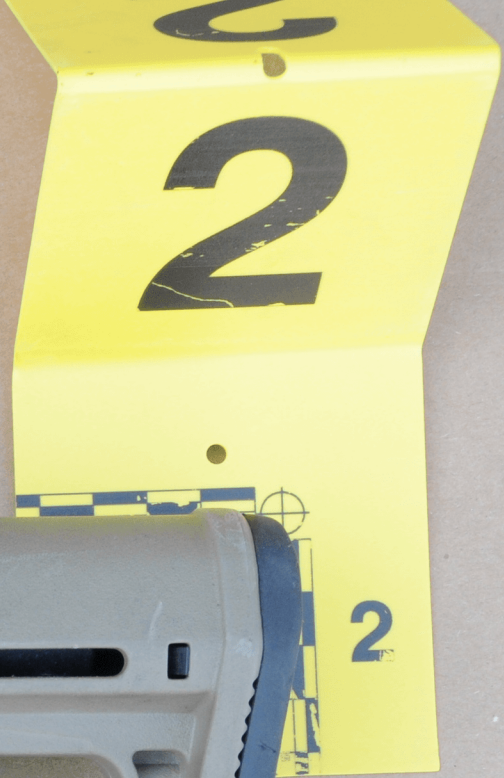
ProTac  
PART NUMBER 844  
5000000 000  
PROFESIONALS

















M&E  
MADE IN USA



EOTACH

MDE  
MADE IN USA

R30

M54