

ATTACHMENT A

Model School Floor Plans

Provided by the Ohio Facilities Construction Commission

The Ohio Facilities Construction Commission, under guidance from the Ohio Attorney General's School Safety Taskforce, has prepared the Model School Floor Plans to help guide schools in developing and submitting floor plans that best meet the needs of emergency responders during an incident. You should print the materials in Attachment A on legal sized paper (8.5 x 14) for better viewing.

Page 1: Page one of the Model School Floor Plans represents the best example of what a finished school floor plan should look like when it is submitted to the Ohio Attorney General's Office, for inclusion in OHLEG. The floor plan meets all of the specifications set forth in the Floor Plan Checklist, provided in the Emergency Operations Plan developed by the Ohio Attorney General's School Safety Taskforce.

Page 2: Page two is an example of a blank floor plan, which should be readily obtainable by the school district. This blank floor plan can be customized to meet the requested specifications using the symbols and/or stickers provided on pages four – six of this Attachment A.

Page 3: Page three is also a blank floor plan, but is showing shaded corridors. Corridors on some floor plans may be shaded in CAD drawings provided by the school district's architecture firm.

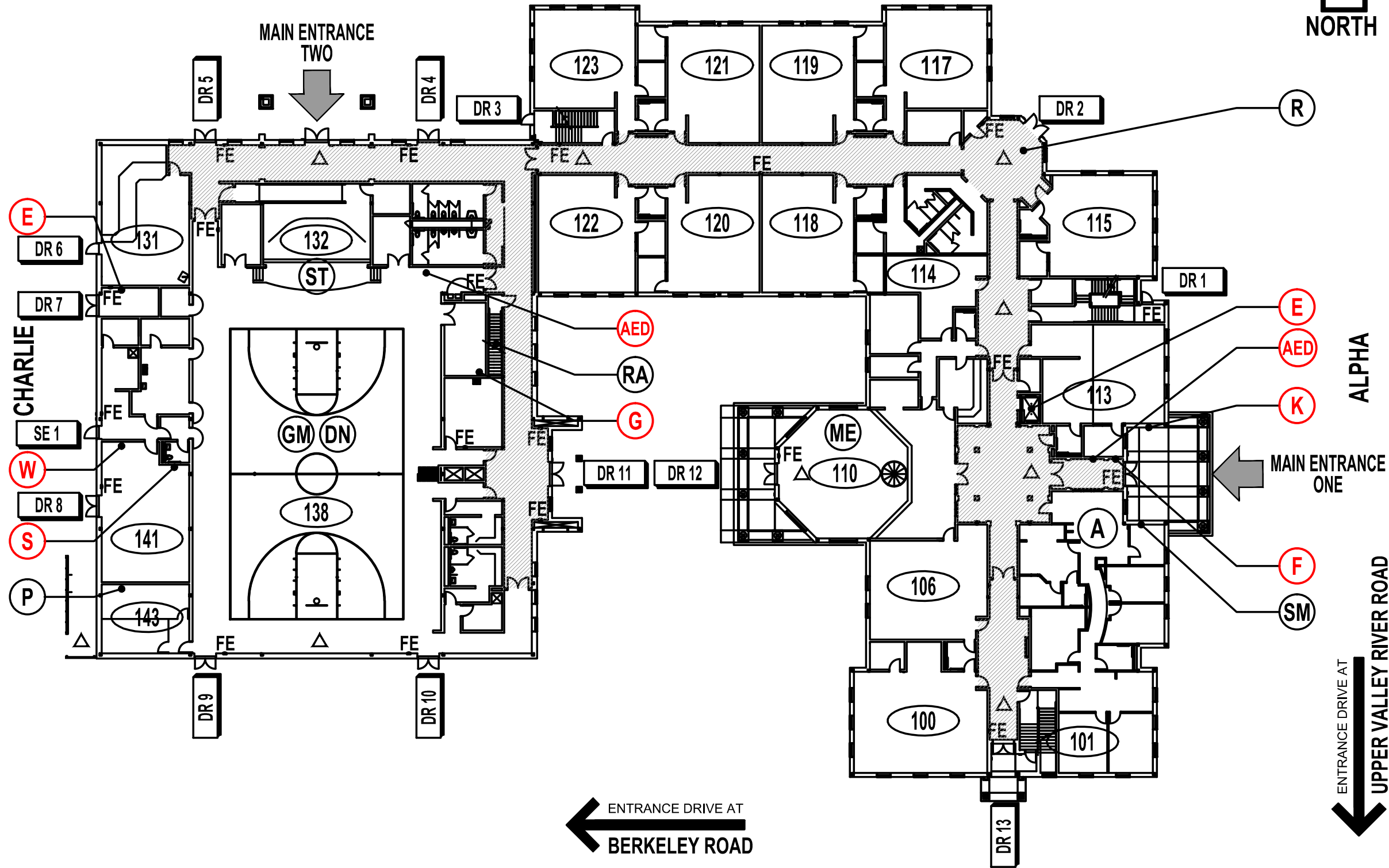
Page 4: Page four provides the Legend Key recommended for use in developing school floor plans. These legends can be printed on clear label sheets, cut to size and be affixed to the blank floor plans referenced on pages two and three.

Page 5: Page five provides the symbols used to mark the school floor plans, as specified in the Legend Key. These symbols can be printed on clear label sheets, cut to size and be affixed to the blank floor plans to mark the key areas of the floor plans.

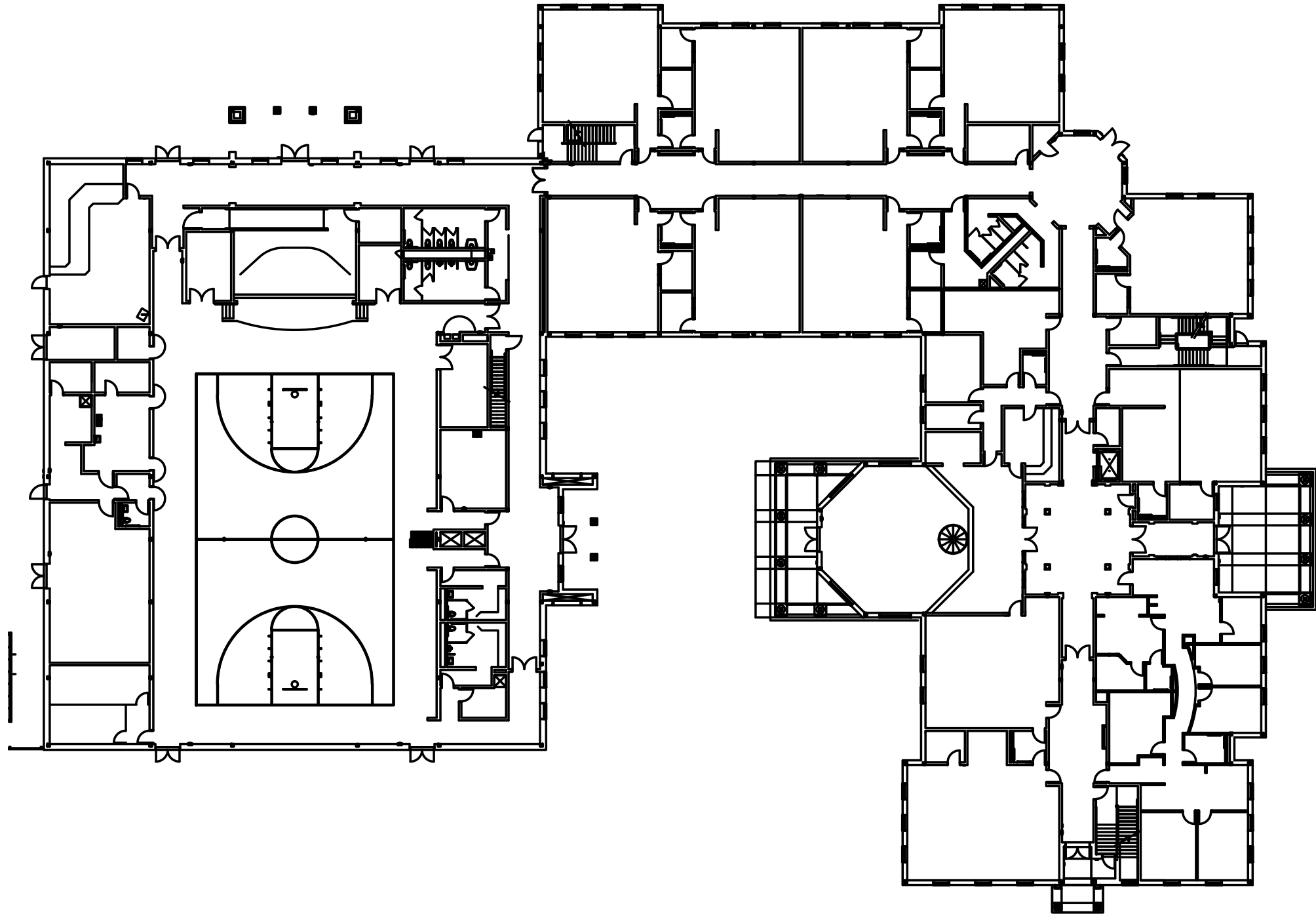
Page 6: Page six provides room numbers that can be used to mark the rooms shown in the floor plans. These symbols can be printed on clear label sheets, cut to size and be affixed to the blank floor plans to mark the rooms located on the floor plans.

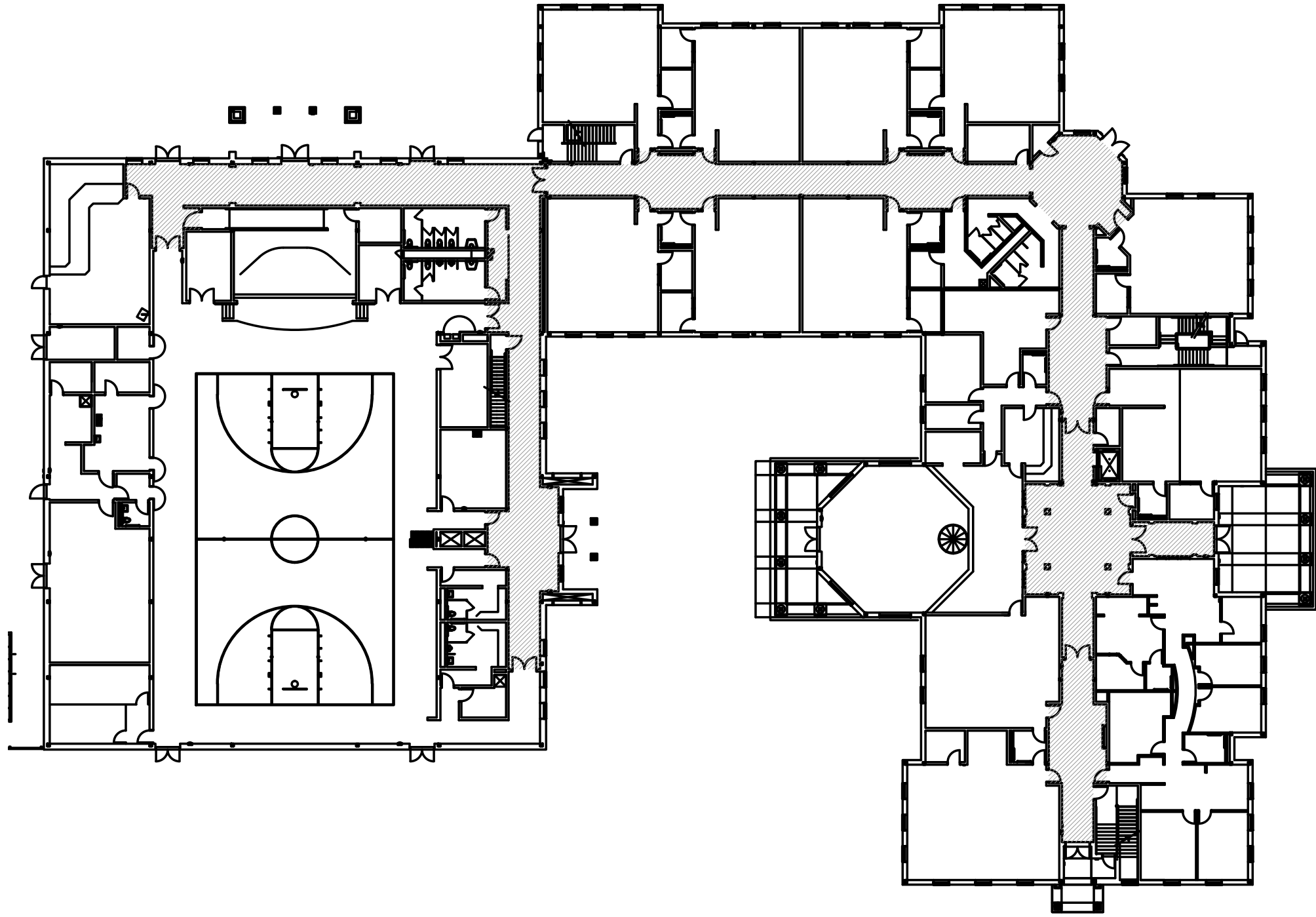
NOTE: School officials are encouraged to review their School Floor Plans against the Floor Plan Checklist provided in the Emergency Operations Plan. The completed checklist should be submitted to the Ohio Attorney General's Office along with the floor plans, for inclusion in OHLEG. Floor plans submitted to the Ohio Attorney General's Office by hard copy must be printed on paper small than 11 x 17.

DELTA



CRITICAL	(AED)	LOCATION OF EXISTING AED
	(E)	ELECTRICAL SHUTOFF
	(F)	FIRE ALARM PANEL
	(G)	GAS SHUTOFF
	(K)	KNOX BOX
	(S)	SPRINKLER SHUTOFF
NON-CRITICAL	(W)	WATER SHUTOFF
	(A)	ADMINISTRATIVE SUITE
	(R)	AREA OF REFUGE
	△	CAMERA
	▨	CORRIDOR
	(E)	ELEVATOR
	DR 1	EXTERIOR DOORS
	FE	FIRE EXTINGUISHER
	(P)	LOCATION OF BLUEPRINTS
	(RA)	ROOF ACCESS POINT
	123	ROOM NUMBER
	(SM)	SECURITY MONITORING AND ACCESS CONTROL
SE 1	SERVICE ENTRANCE	
COMMON AREAS	(DN)	DINING
	(GM)	GYMNASIUM
	(ME)	MEDIA
	(ST)	STAGE
UPPER MIDDLE VALLEY EXEMPTED SCHOOL DISTRICT UPPER MIDDLE VALLEY MIDDLE SCHOOL (555) 111.1111 UPPER VALLEY FACILITY SAFETY PLAN Ohio Facilities Construction Commission		
IRN	123435	
Building Telephone Number	(555) 123.4567	
Emergency Telephone Number	(555) 987.6543	



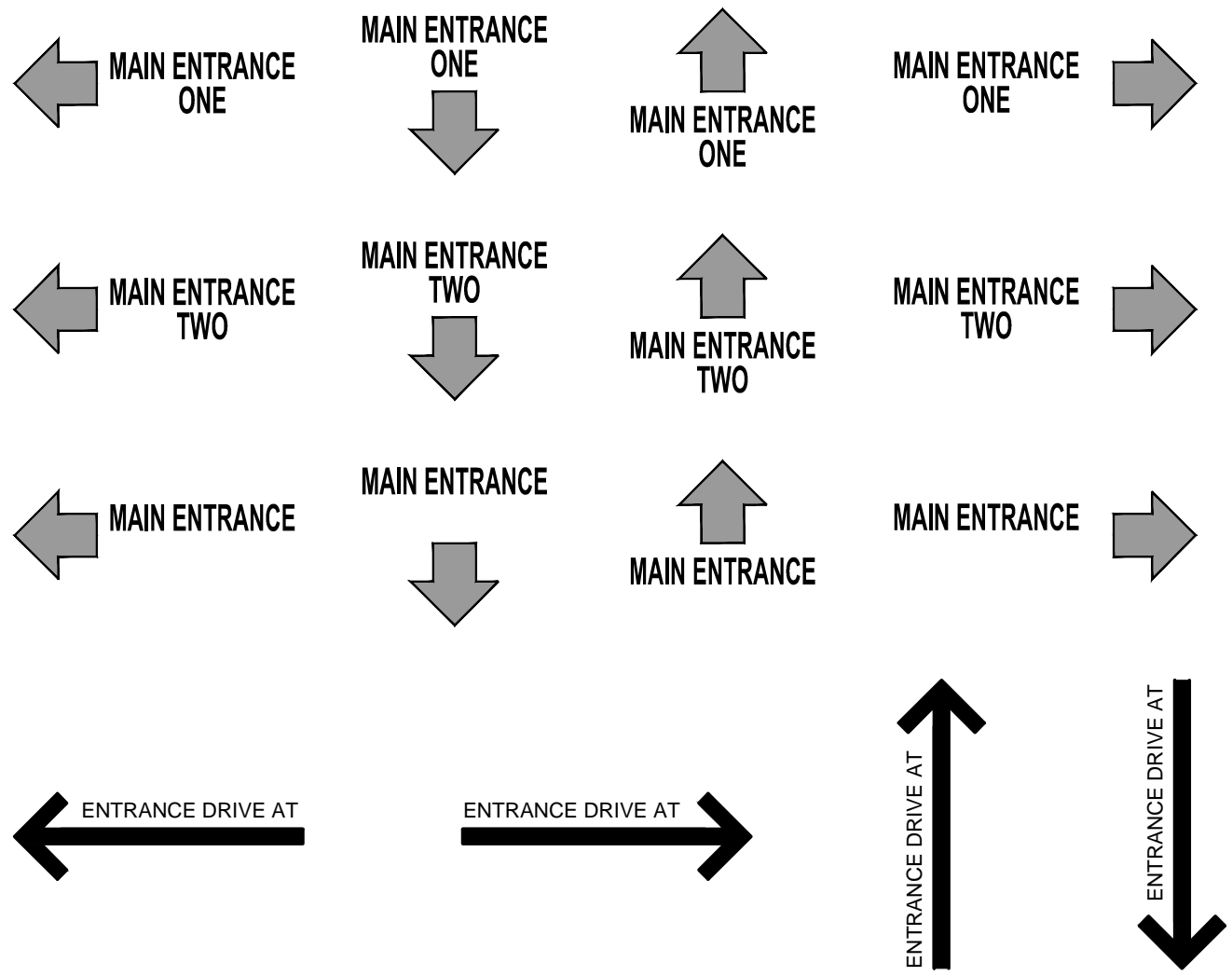
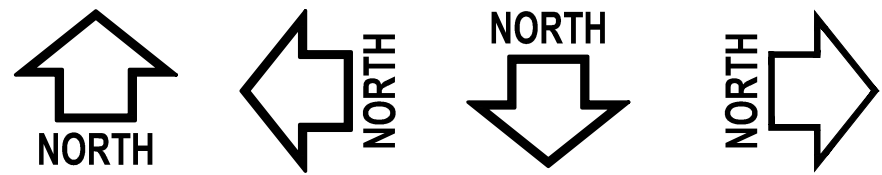


CRITICAL	(AED) LOCATION OF EXISTING AED
	(E) ELECTRICAL SHUTOFF
	(F) FIRE ALARM PANEL
	(G) GAS SHUTOFF
	(K) KNOX BOX
	(S) SPRINKLER SHUTOFF
	(W) WATER SHUTOFF
NON-CRITICAL	(A) ADMINISTRATIVE SUITE
	(R) AREA OF REFUGE
	△ CAMERA
	▨ CORRIDOR
	(E) ELEVATOR
	DR 1 EXTERIOR DOORS
	FE FIRE EXTINGUISHER
	(P) LOCATION OF BLUEPRINTS
	(RA) ROOF ACCESS POINT
	123 ROOM NUMBER
	(SM) SECURITY MONITORING AND ACCESS CONTROL
SE 1 SERVICE ENTRANCE	
COMMON AREAS	(DN) DINING
	(GM) GYMNASIUM
	(ME) MEDIA
	(ST) STAGE
FACILITY SAFETY PLAN Ohio Facilities Construction Commission	
IRN	
Building Telephone Number	
Emergency Telephone Number	

CRITICAL	(AED) LOCATION OF EXISTING AED
	(E) ELECTRICAL SHUTOFF
	(F) FIRE ALARM PANEL
	(G) GAS SHUTOFF
	(K) KNOX BOX
	(S) SPRINKLER SHUTOFF
	(W) WATER SHUTOFF
NON-CRITICAL	(A) ADMINISTRATIVE SUITE
	(R) AREA OF REFUGE
	△ CAMERA
	▨ CORRIDOR
	(E) ELEVATOR
	DR 1 EXTERIOR DOORS
	FE FIRE EXTINGUISHER
	(P) LOCATION OF BLUEPRINTS
	(RA) ROOF ACCESS POINT
	123 ROOM NUMBER
	(SM) SECURITY MONITORING AND ACCESS CONTROL
SE 1 SERVICE ENTRANCE	
COMMON AREAS	(DN) DINING
	(GM) GYMNASIUM
	(ME) MEDIA
	(ST) STAGE
FACILITY SAFETY PLAN Ohio Facilities Construction Commission	
IRN	
Building Telephone Number	
Emergency Telephone Number	

CRITICAL	(AED) LOCATION OF EXISTING AED
	(E) ELECTRICAL SHUTOFF
	(F) FIRE ALARM PANEL
	(G) GAS SHUTOFF
	(K) KNOX BOX
	(S) SPRINKLER SHUTOFF
	(W) WATER SHUTOFF
NON-CRITICAL	(A) ADMINISTRATIVE SUITE
	(R) AREA OF REFUGE
	△ CAMERA
	▨ CORRIDOR
	(E) ELEVATOR
	DR 1 EXTERIOR DOORS
	FE FIRE EXTINGUISHER
	(P) LOCATION OF BLUEPRINTS
	(RA) ROOF ACCESS POINT
	123 ROOM NUMBER
	(SM) SECURITY MONITORING AND ACCESS CONTROL
SE 1 SERVICE ENTRANCE	
COMMON AREAS	(DN) DINING
	(GM) GYMNASIUM
	(ME) MEDIA
	(ST) STAGE
FACILITY SAFETY PLAN Ohio Facilities Construction Commission	
IRN	
Building Telephone Number	
Emergency Telephone Number	

CRITICAL	(AED) LOCATION OF EXISTING AED
	(E) ELECTRICAL SHUTOFF
	(F) FIRE ALARM PANEL
	(G) GAS SHUTOFF
	(K) KNOX BOX
	(S) SPRINKLER SHUTOFF
	(W) WATER SHUTOFF
NON-CRITICAL	(A) ADMINISTRATIVE SUITE
	(R) AREA OF REFUGE
	△ CAMERA
	▨ CORRIDOR
	(E) ELEVATOR
	DR 1 EXTERIOR DOORS
	FE FIRE EXTINGUISHER
	(P) LOCATION OF BLUEPRINTS
	(RA) ROOF ACCESS POINT
	123 ROOM NUMBER
	(SM) SECURITY MONITORING AND ACCESS CONTROL
SE 1 SERVICE ENTRANCE	
COMMON AREAS	(DN) DINING
	(GM) GYMNASIUM
	(ME) MEDIA
	(ST) STAGE
FACILITY SAFETY PLAN Ohio Facilities Construction Commission	
IRN	
Building Telephone Number	
Emergency Telephone Number	



ALPHA
BRAVO
CHARLIE
DELTA

ALPHA
BRAVO
CHARLIE
DELTA

- (AED) LOCATION OF EXISTING AED
- (E) ELECTRICAL SHUTOFF
- (F) FIRE ALARM PANEL
- (G) GAS SHUTOFF
- (K) KNOX BOX
- (S) SPRINKLER SHUTOFF
- (W) WATER SHUTOFF
- (A) ADMINISTRATIVE SUITE
- (E) ELEVATOR
- (P) LOCATION OF BLUEPRINTS
- (SM) SECURITY MONITORING AND ACCESS CONTROL
- (DN) DINING
- (GM) GYMNASIUM
- (ME) MEDIA
- (ST) STAGE

- DR 1 DR 2 DR 3 DR 4 DR 5 DR 6 DR 7 DR 8 DR 9 DR 10 DR 11 DR 12 DR 13 DR 14 EXTERIOR DOORS
- FE FE FE FE FE FE FE FE FE FE FE FE FE FE FIRE EXTINGUISHER
- (RA) (RA) (RA) (RA) (RA) (RA) (RA) (RA) (RA) (RA) (RA) (RA) (RA) (RA) ROOF ACCESS POINT
- SE 1 SE 2 SE 3 SE 4 SE 5 SE 6 SE 7 SE 8 SE 9 SE 10 SE 11 SE 12 SE 13 SE 14 SERVICE ENTRANCE
- (R) (R) (R) (R) (R) (R) (R) (R) (R) (R) (R) (R) (R) (R) AREA OF REFUGE
- △ △ △ △ △ △ △ △ △ △ △ △ △ △ CAMERA

101	121	141	161	181	201	221	241	261	281
102	122	142	162	182	202	222	242	262	282
103	123	143	163	183	203	223	243	263	283
104	124	144	164	184	204	224	244	264	284
105	125	145	165	185	205	225	245	265	285
106	126	146	166	186	206	226	246	266	286
107	127	147	167	187	207	227	247	267	287
108	128	148	168	188	208	228	248	268	288
109	129	149	169	189	209	229	249	269	289
110	130	150	170	190	210	230	250	270	290
111	131	151	171	191	211	231	251	271	291
112	132	152	172	192	212	232	252	272	292
113	133	153	173	193	213	233	253	273	293
114	134	154	174	194	214	234	254	274	294
115	135	155	175	195	215	235	255	275	295
116	136	156	176	196	216	236	256	276	296
117	137	157	177	197	217	237	257	277	297
118	138	158	178	198	218	238	258	278	298
119	139	159	179	199	219	239	259	279	299
120	140	160	180		220	240	260	280	