



**Ohio Bureau of Criminal Identification & Investigation**  
**INVESTIGATIVE REPORT**



**12/10/2012 SHOOTING INCIDENT RECONSTRUCTION: CPD CRUISER #217**

**Summary**


On Monday, December 10, 2012, BCI Special Agents Daniel Winterich, Gary Wilgus, George Staley, and Brenda McNeely conducted a shooting incident reconstruction on CPD cruiser #217 that was related to the officer involved shooting on November 29, 2012 in East Cleveland. The vehicle was photographed, mapped and firearms related evidence was collected.

**Details**

On December 10, 2012, BCI Special Agent Daniel Winterich conducted a shooting incident reconstruction on CPD cruiser #217 that was related to the officer involved shooting on November 29, 2012 in East Cleveland. Assisting him were Agents Gary Wilgus, George Staley, and Brenda McNeely. This examination took place at the vehicle investigation garage at the BCI office in Richfield.

The vehicle was a marked Dodge Charger bearing a VIN of 2C3DXAG9CH162851. Agent Winterich photographed the vehicle as he found it and Agents Staley and McNeely were assigned to map the vehicle utilizing the total station.

After the exterior was examined, the bullet holes were labeled and mapped. All bullet holes were photographed via macro photography. Each bullet hole or bullet strike was labeled with "BH" followed by a number (e.g. "BH1" for an entry or "BH1.1" for an exit). These numbers do not indicate shot sequence but were arbitrarily selected. There were a minimum of nineteen bullet holes found on the vehicle (see Figure 1). Five bullet holes were concentrated on the driver's side windshield, ten were concentrated on the passenger's side windshield, and four were on the passenger's side front doorframe and interior. The cone fractures on the bullet holes on the windshield and the shapes of the other bullet holes indicate that all of these shots were fired from the inside outward or from the outside through the open passenger's side door. None of the bullet holes had two impact points so the trajectories could not be accurately determined with trajectory rods.

<b>File Number: CS-18-12-82-1488</b>	<b>File Title: Timothy R. Russell (S) &amp; Malissa A. Williams (S)</b>
<b>Case Agent: Daniel Winterich</b>	<b>Authoring Agent: Daniel Winterich</b> DRW
<b>Date of Report: 12/20/12</b>	<b>Exhibit #: 4</b>
<b>Investigative Activity: Officer Involved Shooting</b>	<b>Supervisor Approval: SAS Dennis Sweet</b>  JAN 09 2013

This document is the property of the Ohio Bureau of Criminal Identification and Investigation and is confidential in nature. Neither the document nor its contents are to be disseminated outside your agency.

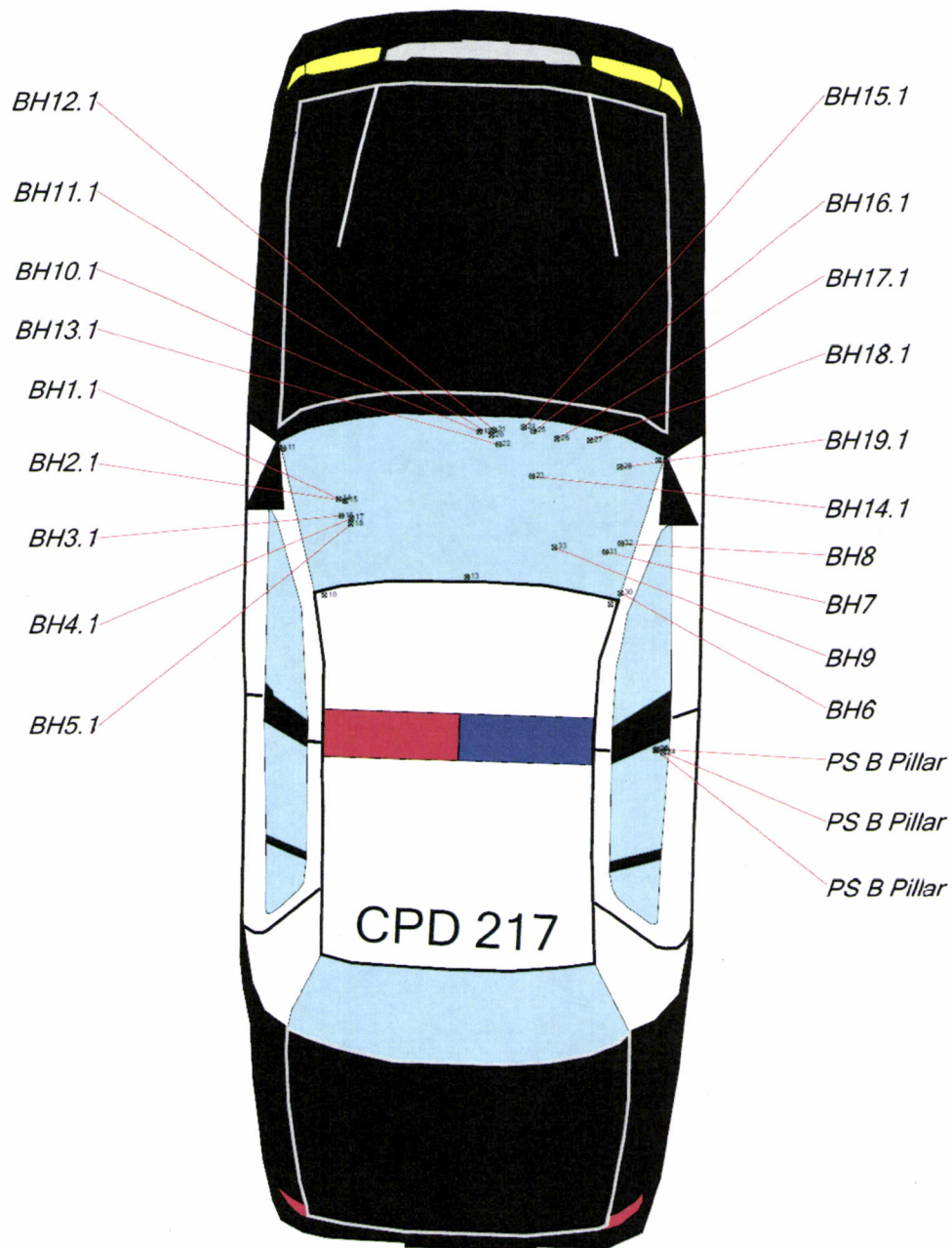


Figure 1 (bullet holes mapped with total station)

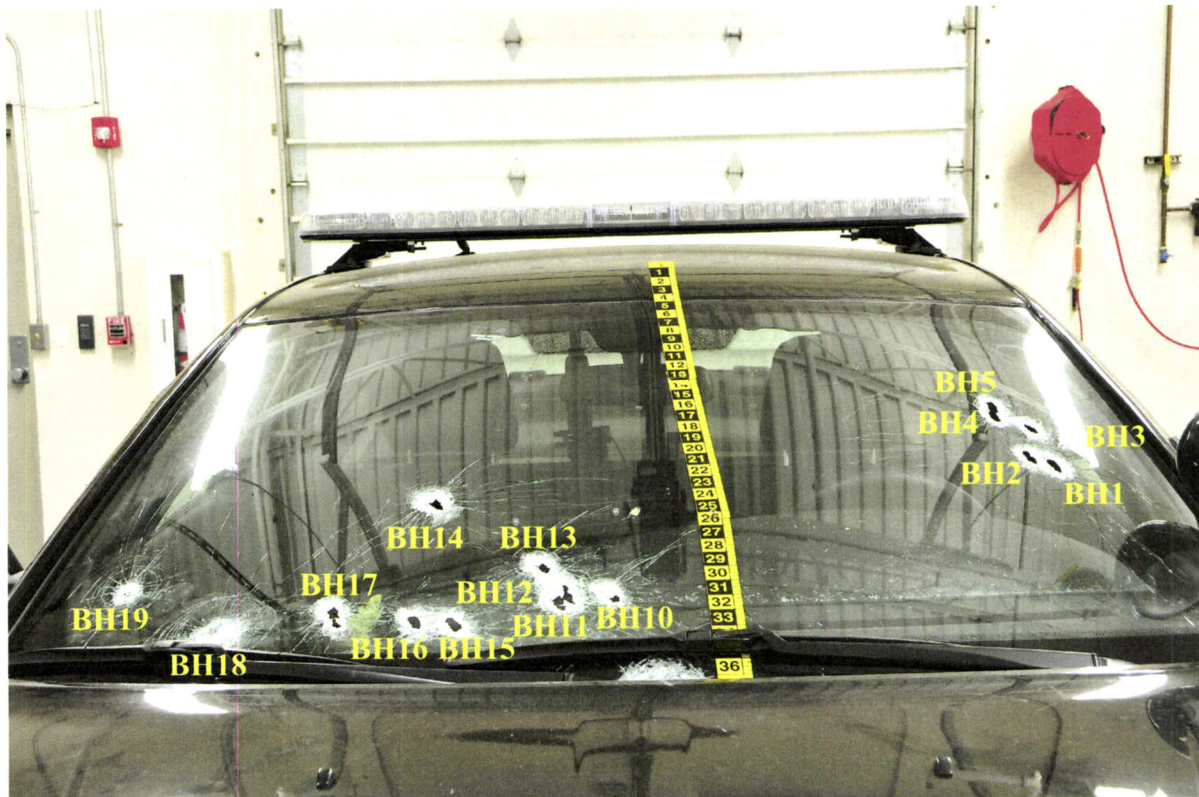
Windshield:

There were fifteen bullet holes found on the windshield (see Figure 2). The cone fractures indicate that these shots were all fired from the inside outward. The following data was collected from these holes:

BH1	Driver's side windshield	N/A	N/A	Outward through windshield, from 5 o'clock to 11.
BH2	Driver's side windshield	N/A	N/A	Outward through windshield, from 5 o'clock to 11.
BH3	Driver's side windshield	N/A	N/A	Outward through windshield, from 5 o'clock to 11.
BH4	Driver's side windshield	N/A	N/A	Outward through windshield, from 5 o'clock to 11.
BH5	Driver's side windshield	N/A	N/A	Outward through windshield, from 5 o'clock to 11.
BH10	Passenger's side windshield	N/A	N/A	Outward through windshield, from 5 o'clock to 11.
BH11	Passenger's side windshield	N/A	N/A	Outward through windshield, from 5 o'clock to 11.
BH12	Passenger's side windshield	N/A	N/A	Outward through windshield, from 5 o'clock to 11.
BH13	Passenger's side windshield	N/A	N/A	Outward through windshield, from 5 o'clock to 11.
BH14	Passenger's side windshield	N/A	N/A	Outward through windshield, from 5 o'clock to 11.
BH15	Passenger's side windshield	N/A	N/A	Outward through windshield, from 5 o'clock to 11.

BH16	Passenger's side windshield	N/A	N/A	Outward through windshield, from 5 o'clock to 11.
BH17	Passenger's side windshield	N/A	N/A	Outward through windshield, from 5 o'clock to 11.
BH18	Passenger's side windshield	N/A	N/A	Ricochet, did not penetrate glass.
BH19	Passenger's side windshield	N/A	N/A	Slight perforation of windshield outward.

*\*12 o'clock is front of vehicle, 6 o'clock is rear of vehicle.*



**Figure 2 (BHs 1-5, 10-19)**

Passenger's side front doorframe and interior:

There were four bullet holes on the passenger's side front doorframe and interior (see Figure 3). These shots were all fired with the door open and into the vehicle. There were also five ricochet marks on the passenger's side B-pillar (see Figure 3). The door was open when these were fired. Four of these marks are in line with each other and could have been caused by two bullets. These marks were not numbered because they most likely were related to bullets that went through the windshield but could not be lined up accurately. The following data was collected from these holes:

Bullet Hole #	Location	Vertical Impact Angle	Horizontal Impact Angle	Direction of Travel*
BH6	Passenger's side A-pillar	N/A	N/A	Door opened when fired and penetrated A-pillar.
BH7	Glovebox	N/A	N/A	5 o'clock to 11, penetrated glovebox.
BH8	Passenger's side air vent	N/A	N/A	5 o'clock to 11, penetrated into air vent.
BH9	Passenger's side dashboard	N/A	N/A	5 o'clock to 11, penetrated dashboard.

\*12 o'clock is front of vehicle, 6 o'clock is rear of vehicle.

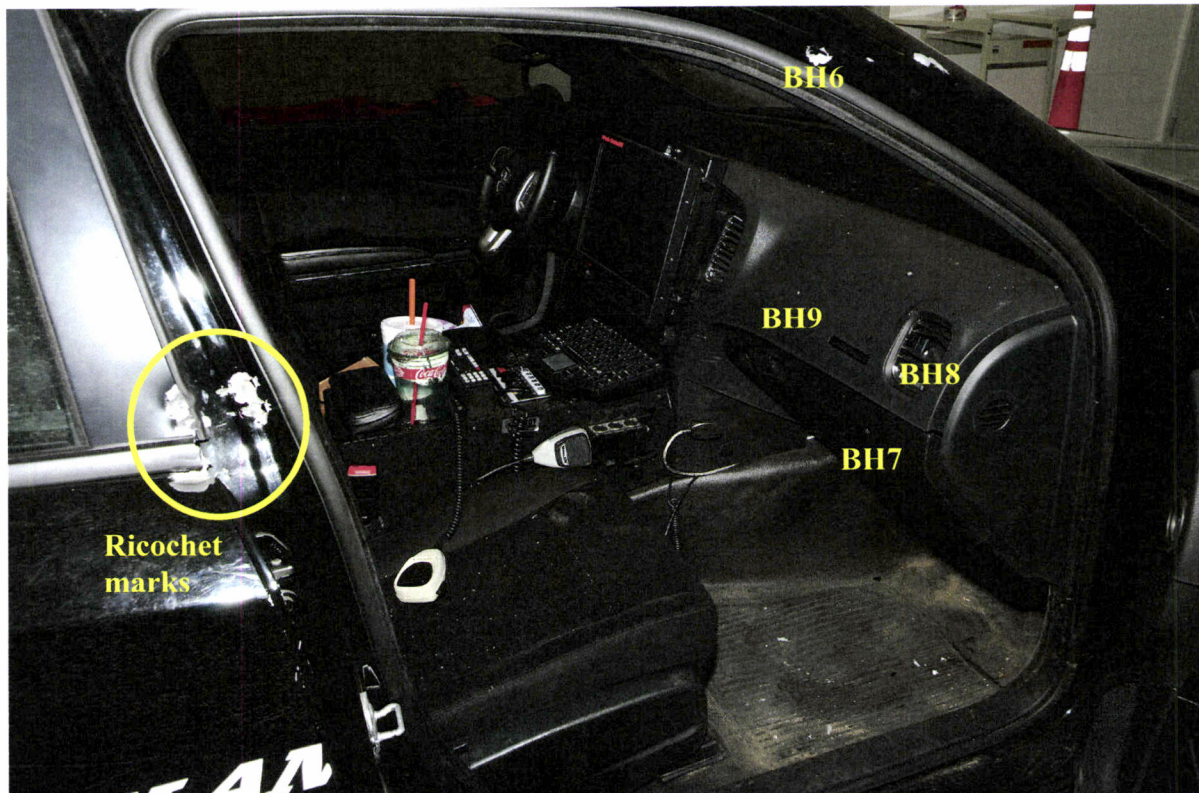


Figure 3 (BHs 6-9)

Officer Involved Shooting

CS-18-12-82-1488

Page 6

The interior was searched and two Speer 9mm cartridge cases were located. One was collected from the center console and the other was collected from behind the passenger's side front seat.

One bullet and eight bullet fragments were recovered from the vehicle:


- One bullet from inside of glovebox (BH7).
- Three fragments from driver's side dashboard.
- Three fragments from the driver's side front floorboard.
- One fragment from the driver's side windshield defrost vent.
- One fragment from the passenger's side windshield defrost vent.

The examination of this vehicle was concluded at 1700 hours.

---

**A copy of this report is to be sent to:**

**Det. Sgt. Scott Gardner  
East Cleveland Police Department  
14340 Euclid Ave.  
East Cleveland, OH 44112**

Organization:	Drawn By:	Date:
 Ohio Bureau of Criminal Investigation	S/A Staley	December 18, 2012

