



Ohio Bureau of Criminal Identification & Investigation
INVESTIGATIVE REPORT



11/30/2012 CRIME SCENE EXAMINATION: 14410 TERRACE ROAD

Summary

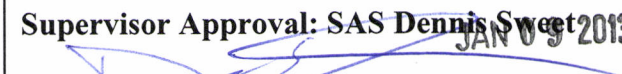
On Friday, November 30, 2012, BCI Special Agents Daniel Winterich, George Staley, and Brenda McNeely assisted the East Cleveland Police Department with investigating an officer involved shooting that resulted in the death of two people. The scene was documented and processed. Firearms related evidence was collected.

Details

On Friday, November 30, 2012, at 0315 hours BCI Special Agent Daniel Winterich arrived at Heritage Middle School, located at 14410 Terrace Road, East Cleveland, Ohio to assist the East Cleveland Police Department with an officer involved shooting investigation. Detective Sergeant Scott Gardner reported that officers from the Cleveland Police Department (CPD) had initiated a pursuit after an officer reported hearing a suspected gunshot being fired from a blue Chevrolet Malibu in front of 205 West St. Clair. The pursuit lasted approximately twenty-six minutes and ended in a driveway of Heritage Middle School where the Malibu and CPD cruiser #238 collided. Thirteen Cleveland police officers reportedly fired approximately one hundred thirty-seven rounds which resulted in the death of the occupants of the Malibu. The driver was subsequently identified as Timothy R. Russell and the passenger as Malissa A. Williams. A total of nine CPD cruisers were on scene upon Agent Winterich's arrival (five marked cruisers and four unmarked cruisers). BCI Special Agent Supervisor Dennis Sweet and BCI Special Agents George Staley, Brenda McNeely, and Mark Kollar arrived to assist Agent Winterich. Also on scene were CPD Internal Affairs detectives.

A perimeter had already been established prior to BCI arrival and it was slightly expanded by Agent Winterich after the initial walkthrough. Also, evidence placards #1-97 had been placed down prior to BCI arrival. Agent Winterich photographed the scene as he found it. Agents Staley and McNeely were assigned to map the scene utilizing the total station.

The shooting took place in a driveway that ran southwest from Wymore Avenue and that led into a parking lot for the school. A playground was located on the west side of the parking lot

File Number: CS-18-12-82-1488	File Title: Timothy R. Russell (S) & Malissa A. Williams (S)
Case Agent: Daniel Winterich	Authoring Agent: Daniel Winterich DRW
Date of Report: 12/11/12	Exhibit #: 1
Investigative Activity: Officer Involved Shooting	Supervisor Approval: SAS Dennis Sweet 2013 

Officer Involved Shooting

CS-18-12-82-1488

Page 2

driveway and a separate driveway (used as a bus loop) was located at a higher elevation on the southeast side of the driveway. The width of the parking lot driveway measured 20' and a total of four light posts lined the west side of the parking lot driveway while six others surrounded the parking lot. These lights were all functioning at the time. The weather was clear and the temperature was approximately thirty-seven degrees Fahrenheit.

Located approximately 35' southwest from the entry to the driveway were two CPD cruisers and the Malibu. Located on the northwest side of the driveway and facing southwest was CPD #217 (placard #1). Located on the southeast side of the driveway and facing south was CPD #238 (placard #2). On the west side and adjacent to CPD #238 was the Malibu (placard #3). See Figures 1 and 2 for an overall depiction of these vehicles.



Figure 1 (looking west)



Figure 2 (looking north)

The Malibu was determined to be a light blue 1979 model bearing Ohio license plates of FSA-3495 and a VIN of 1W19J91485352. It was facing northeast and had impacted the passenger's side of CPD #238 (see Figure 3). Body damage was also noted on both rear fenders and the driver's side front tire was flat. A large c-clamp was attached to the passenger's side B-pillar and it was holding the door shut. The rear and passenger's side rear windows were partially broken out and the passenger's side front and driver's side rear windows were fully broken out. The driver's side front window was down. It was in park, the engine was off, and the keys had been removed from the ignition by CPD officers and placed on the hood near the windshield (placard #69). Numerous bullet holes were noted on the exterior of the vehicle mostly concentrated on the windshield and front passenger's side (see the attached report detailing the complete examination of the Malibu which was conducted at a later time). Four Speer 9mm cartridge cases were located on the hood (placard #s 70, 71, 72, 73).

The bodies of Williams and Russell were situated in the front seat compartment. Russell was seated in the driver's seat and was slumped over toward the passenger's side with his head resting on Williams' back. He was wearing light colored pants and a black sweatshirt. A bullet was lodged in the driver's side front window frame (placard #88). Williams was seated in the passenger's seat with her back against Russell's right side and facing out towards the passenger's side. She was wearing several layers of clothing with the outer layer consisting of a blue jacket and light blue pants. Small glass shards were covering both bodies. Located in the rear seat were some clothes, a suitcase, and a tire. A bullet was situated on top of the suitcase (placard #83) and an additional bullet was located on the driver's side rear window ledge (placard #84). Four Speer 9mm cartridge cases (placard #s 82, 132, 133, 134), two bullets (placard #s 135, 138) and four bullet fragments (placard #s 86, 87, 136, 139) were found underneath the vehicle. A cursory search of the visible portions of the interior was conducted and no firearms were seen.



Figure 3 (looking southwest: CPD #238 & Malibu)

CPD #217 was a marked Dodge Charger bearing a VIN of 2C3CDXAG9CH162851. It was running and the passenger's side door was ajar. There were approximately nineteen bullet holes in the windshield and preliminary analysis revealed that these shots had been fired from inside the vehicle outward. Several other bullet holes and impacts were noted on the passenger's side A and B pillars and these indicated that the door was open at the time the shots were fired (see the attached report detailing the complete examination of CPD #217 which was conducted at a later time). Two Speer 9mm cartridge cases were found on the passenger's side front seat (placard #s 77, 78) and an additional one was located on the passenger's side front floorboard (placard #79). Five Speer 9mm cartridge cases were located on the passenger's side wiper cowl (placard #s 107, 108, 109, 110, 122) and a bullet was discovered on the driver's side front seat (placard #111). Four more Speer 9mm cartridge cases (placard #s 52, 74, 80, 81), a bullet (placard #75), and a bullet fragment (placard #74) were found underneath the vehicle

Twenty-five Speer 9mm cartridge cases were located on the driveway and the grassy area west of CPD #217 (placard #s 24, 26, 27, 28, 29, 30, 31, 32, 33, 34, 35, 37, 38, 39, 98, 99, 100, 101, 105, 119, 126, 128, 129, 130, 131). Also found within this area was a shotgun shell (placard #36), a Speer 9mm cartridge (placard #25), and a bullet (placard #135).

Seventeen Speer 9mm cartridge cases (placard #s 40, 41, 42, 43, 44, 46, 47, 48, 49, 50, 51, 53, 64, 65, 66, 67, 96) and six bullets (placard #s 45, 88, 97, 106, 137, 140) were located on the driveway southwest of CPD #217 and adjacent to the Malibu.

CPD #238 was a marked Ford Crown Victoria bearing a VIN of 2FABP7BV6AX101591. Body damage was noted on the passenger's side. Numerous footwear impressions were located on the front hood, at least two were on the roof, and several were on the trunk. The tread patterns of the impressions from the roof and trunk were similar to each other but different from the patterns visible on the hood. There were three bullet holes on the windshield. Preliminary analysis revealed that these shots had been fired from outside the vehicle inward and that the directions of travel were from the driver's side to the passenger's side (see the attached report detailing the complete examination of CPD #238 which was conducted at a later time).

Thirty-one Speer 9mm cartridge cases were located on the driveway northeast of the Malibu and CPD #238 and adjacent to CPD #217 (placard #s 4, 5, 6, 7, 8, 9, 10, 11, 12, 13, 14, 15, 16, 17, 18, 19, 20, 21, 22, 23, 54, 55, 56, 57, 58, 59, 60, 61, 62, 63, 85).

Twenty-two Speer 9mm cartridge cases (placard #s 68, 89, 90, 91, 92, 93, 94, 102, 103, 112, 113, 114, 115, 116, 117, 118, 120, 121, 123, 124, 125, 127) and one bullet fragment (placard #104) were located on the sidewalk, driveway, and grassy knoll southeast of CPD #238 and the Malibu.

Located southwest of these three vehicles were the following CPD cruisers (from northeast to southwest): an unmarked silver Dodge Charger bearing Ohio license plates of FJD-7285 (facing southwest), an unmarked black Dodge Charger bearing Ohio license plates of FJD-7297 (facing northeast), CPD #244 which was a marked Ford Crown Victoria (facing north), an unmarked black Ford Crown Victoria bearing Ohio license plates of DZH-5079 (facing northeast), CPD #243A which was a marked Ford Crown Victoria (facing northeast), CPD #215 which was a Dodge Charger (facing northeast), and an unmarked black Ford Crown Victoria bearing Ohio

license plates of CNS-2443 (facing south). A plastic vehicle part was located near the passenger's side rear tire of the silver unmarked Charger (placard #76). These vehicles were photographed, examined, mapped into the scene, and then released. No bullet holes were noted on these vehicles.

Skid marks and tire impressions were found on a traffic island southwest of the vehicles (see Figure 4). This was the reported location where the Malibu went up onto the traffic island and where the first shots were fired. Three Speer 9mm cartridge cases (placard #s 95, 141, and 143), one bullet (placard #144), and one bullet fragment (placard #142) were found in this area. Two of the cartridge cases were found on the island near the tire impressions and the third was found on the ground just southwest of the island. The bullet and bullet fragment were found on the island near the tire impressions.



Figure 4 (looking north: skid marks and tire impressions on island)

Personnel from the Cuyahoga County Medical Examiner's Office arrived on scene. Per their request, the bodies were left in the Malibu and it was towed to their office for the autopsies. The doors were sealed with evidence tape and an East Cleveland officer followed the Malibu as it was towed on a flatbed tow truck to the Medical Examiner's Office. CPD cruisers #238 and #217 were towed to Cleveland Police Impound Lot #2 located at 4300 Bradley Road. A plan was made to individually process all three vehicles at a later point (see the separate reports detailing these efforts).

The scene was searched utilizing grid search patterns and metal detectors. The following items were photographed, mapped, and collected as evidence:

Placard #	Description	Location	Collected by
1	CPD #217	Driveway	Dan Winterich
2	CPD #238	Driveway	Dan Winterich
3	Chevrolet Malibu (FSA-3495)	Driveway	Dan Winterich
4	Speer 9mm cartridge case	Driveway northeast of CPD #238	Dan Winterich
5	Speer 9mm cartridge case	Driveway northeast of CPD #238	Dan Winterich
6	Speer 9mm cartridge case	Driveway northeast of CPD #238	Dan Winterich
7	Speer 9mm cartridge case	Driveway northeast of CPD #238	Dan Winterich
8	Speer 9mm cartridge case	Driveway northeast of CPD #238	Dan Winterich
9	Speer 9mm cartridge case	Driveway northeast of CPD #238	Dan Winterich
10	Speer 9mm cartridge case	Driveway northeast of CPD #238	Dan Winterich
11	Speer 9mm cartridge case	Driveway northeast of CPD #238	Dan Winterich
12	Speer 9mm cartridge case	Driveway northeast of CPD #238	Dan Winterich
13	Speer 9mm cartridge case	Driveway northeast of CPD #238	Dan Winterich
14	Speer 9mm cartridge case	Driveway northeast of CPD #238	Dan Winterich
15	Speer 9mm cartridge case	Driveway northeast of CPD #238	Dan Winterich
16	Speer 9mm cartridge case	Driveway northeast of CPD #238	Dan Winterich
17	Speer 9mm cartridge case	Driveway northeast of CPD #238	Dan Winterich
18	Speer 9mm cartridge case	Driveway northeast of CPD #238	Dan Winterich
19	Speer 9mm cartridge case	Driveway northeast of CPD #238	Dan Winterich

Officer Involved Shooting

CS-18-12-82-1488

Page 7

20	Speer 9mm cartridge case	Driveway northeast of CPD #238	Dan Winterich
21	Speer 9mm cartridge case	Driveway northeast of CPD #238	Dan Winterich
22	Speer 9mm cartridge case	Driveway northeast of CPD #238	Dan Winterich
23	Speer 9mm cartridge case	Driveway northeast of CPD #238	Dan Winterich
24	Speer 9mm cartridge case	Driveway west of CPD #217	Dan Winterich
25	Speer 9mm cartridge	Grassy area west of CPD #217	Dan Winterich
26	Speer 9mm cartridge case	Grassy area west of CPD #217	Dan Winterich
27	Speer 9mm cartridge case	Grassy area west of CPD #217	Dan Winterich
28	Speer 9mm cartridge case	Driveway west of CPD #217	Dan Winterich
29	Speer 9mm cartridge case	Grassy area west of CPD #217	Dan Winterich
30	Speer 9mm cartridge case	Grassy area west of CPD #217	Dan Winterich
31	Speer 9mm cartridge case	Grassy area west of CPD #217	Dan Winterich
32	Speer 9mm cartridge case	Grassy area west of CPD #217	Dan Winterich
33	Speer 9mm cartridge case	Grassy area west of CPD #217	Dan Winterich
34	Speer 9mm cartridge case	Grassy area west of CPD #217	Dan Winterich
35	Speer 9mm cartridge case	Grassy area west of CPD #217	Dan Winterich
36	Shotgun shell	Grassy area west of CPD #217	Dan Winterich
37	Speer 9mm cartridge case	Driveway west of CPD #217	Dan Winterich
38	Speer 9mm cartridge case	Grassy area west of CPD #217	Dan Winterich
39	Speer 9mm cartridge case	Grassy area west of CPD #217	Dan Winterich
40	Speer 9mm cartridge case	Grassy area west of Malibu	Dan Winterich
41	Speer 9mm cartridge case	Driveway west of Malibu	Dan Winterich

42	Speer 9mm cartridge case	Driveway west of Malibu	Dan Winterich
43	Speer 9mm cartridge case	Driveway west of Malibu	Dan Winterich
44	Speer 9mm cartridge case	Driveway west of Malibu	Dan Winterich
45	Bullet	Driveway west of Malibu	Dan Winterich
46	Speer 9mm cartridge case	Driveway west of Malibu	Dan Winterich
47	Speer 9mm cartridge case	Driveway west of Malibu	Dan Winterich
48	Speer 9mm cartridge case	Driveway west of Malibu	Dan Winterich
49	Speer 9mm cartridge case	Driveway west of Malibu	Dan Winterich
50	Speer 9mm cartridge case	Driveway west of Malibu	Dan Winterich
51	Speer 9mm cartridge case	Driveway west of Malibu	Dan Winterich
52	Speer 9mm cartridge case	Underneath CPD #217	Dan Winterich
53	Speer 9mm cartridge case	Driveway west of Malibu	Dan Winterich
54	Speer 9mm cartridge case	Driveway northeast of Malibu	Dan Winterich
55	Speer 9mm cartridge case	Driveway northeast Malibu	Dan Winterich
56	Speer 9mm cartridge case	Driveway northeast of Malibu	Dan Winterich
57	Speer 9mm cartridge case	Driveway northeast of CPD #238	Dan Winterich
58	Speer 9mm cartridge case	Driveway northeast of CPD #238	Dan Winterich
59	Speer 9mm cartridge case	Driveway northeast of CPD #238	Dan Winterich
60	Speer 9mm cartridge case	Driveway northeast of CPD #238	Dan Winterich
61	Speer 9mm cartridge case	Driveway northeast of CPD #238	Dan Winterich
62	Speer 9mm cartridge case	Driveway northeast of CPD #238	Dan Winterich
63	Speer 9mm cartridge case	Driveway northeast of CPD #238	Dan Winterich
64	Speer 9mm cartridge case	Driveway west of Malibu	Dan Winterich

65	Speer 9mm cartridge case	Driveway west of Malibu	Dan Winterich
66	Speer 9mm cartridge case	Driveway west of Malibu	Dan Winterich
67	Speer 9mm cartridge case	Driveway west of Malibu	Dan Winterich
68	Speer 9mm cartridge case	Driveway southeast of CPD #238	Dan Winterich
69	Set of keys	On wiper cowl of Malibu	Dan Winterich
70	Speer 9mm cartridge case	Hood of Malibu	Dan Winterich
71	Speer 9mm cartridge case	Hood of Malibu	Dan Winterich
72	Speer 9mm cartridge case	Hood of Malibu	Dan Winterich
73	Speer 9mm cartridge case	Hood of Malibu	Dan Winterich
74	Speer 9mm cartridge case & bullet fragment	Underneath CPD #217	Dan Winterich
75	Bullet	Underneath CPD #217	Dan Winterich
76	Vehicle part	Driveway near rear passenger's side tire of silver Dodge Charger	Dan Winterich
77	Speer 9mm cartridge case	Front passenger's seat of CPD #217	Dan Winterich
78	Speer 9mm cartridge case	Front passenger's seat of CPD #217	Dan Winterich
79	Speer 9mm cartridge case & bullet fragment	Front passenger's floorboard CPD #217	Dan Winterich
80	Speer 9mm cartridge case	Underneath CPD #217	Dan Winterich
81	Speer 9mm cartridge case	Underneath CPD #217	Dan Winterich
82	Speer 9mm cartridge case	Underneath Malibu	Dan Winterich
83	Bullet	On suitcase in backseat of Malibu	Dan Winterich
84	Bullet	Front driver's side rear window ledge of Malibu	Dan Winterich
85	Speer 9mm cartridge case	Driveway northeast of CPD #238	Dan Winterich
86	Bullet fragment	Underneath Malibu	Dan Winterich

87	Bullet fragment	Underneath Malibu	Dan Winterich
88	Bullet	Driver's side front door frame of Malibu	Dan Winterich
89	Speer 9mm cartridge case	Grassy knoll southeast of CPD #238	Dan Winterich
90	Speer 9mm cartridge case	Grassy knoll southeast of CPD #238	Dan Winterich
91	Speer 9mm cartridge case	Grassy knoll southeast of CPD #238	Dan Winterich
92	Speer 9mm cartridge case	Grassy knoll southeast of CPD #238	Dan Winterich
93	Speer 9mm cartridge case	Sidewalk southeast of CPD #238	Dan Winterich
94	Speer 9mm cartridge case	Sidewalk southeast of CPD #238	Dan Winterich
95	Speer 9mm cartridge case	Driveway southwest of traffic island	Dan Winterich
96	Speer 9mm cartridge case	Driveway northeast of Malibu	Dan Winterich
97	Bullet fragment	Driveway west of Malibu	Dan Winterich
98	Speer 9mm cartridge case	Grassy area west of CPD #217	Dan Winterich
99	Speer 9mm cartridge case	Grassy area west of CPD #217	Dan Winterich
100	Speer 9mm cartridge case	Grassy area west of CPD #217	Dan Winterich
101	Speer 9mm cartridge case	Grassy area west of CPD #217	Dan Winterich
102	Speer 9mm cartridge case	Grassy knoll southeast of CPD #238	Dan Winterich
103	Speer 9mm cartridge case	Grassy knoll southeast of CPD #238	Dan Winterich
104	Bullet fragment	Grassy knoll southeast of CPD #238	Dan Winterich
105	Speer 9mm cartridge case	Grassy area west of CPD #217	Dan Winterich
106	Bullet	Grassy area west of Malibu	Dan Winterich
107	Speer 9mm cartridge case	Wiper cowl of CPD #217	Dan Winterich
108	Speer 9mm cartridge case	Wiper cowl of CPD #217	Dan Winterich
109	Speer 9mm cartridge case	Wiper cowl of CPD #217	Dan Winterich

110	Speer 9mm cartridge case	Wiper cowl of CPD #217	Dan Winterich
111	Bullet	Driver's front seat of CPD #217	Dan Winterich
112	Speer 9mm cartridge case	Grassy knoll southeast of CPD #238	Dan Winterich
113	Speer 9mm cartridge case	Grassy knoll southeast of CPD #238	Dan Winterich
114	Speer 9mm cartridge case	Grassy knoll southeast of CPD #238	Dan Winterich
115	Speer 9mm cartridge case	Grassy knoll southeast of CPD #238	Dan Winterich
116	Speer 9mm cartridge case	Grassy knoll southeast of CPD #238	Dan Winterich
117	Speer 9mm cartridge case	Grassy knoll southeast of CPD #238	Dan Winterich
118	Speer 9mm cartridge case	Grassy knoll southeast of CPD #238	Dan Winterich
119	Speer 9mm cartridge case	Grassy area west of CPD #217	Dan Winterich
120	Speer 9mm cartridge case	Grassy knoll southeast of CPD #238	Dan Winterich
121	Speer 9mm cartridge case	Grassy knoll southeast of CPD #238	Dan Winterich
122	Speer 9mm cartridge case	Wiper cowl of CPD #217	Dan Winterich
123	Speer 9mm cartridge case	Grassy knoll southeast of CPD #238	Dan Winterich
124	Speer 9mm cartridge case	Grassy knoll southeast of CPD #238	Dan Winterich
125	Speer 9mm cartridge case	Grassy knoll southeast of CPD #238	Dan Winterich
126	Speer 9mm cartridge case	Grassy area west of CPD #217	Dan Winterich
127	Speer 9mm cartridge case	Grassy knoll southeast of CPD #238	Dan Winterich
128	Speer 9mm cartridge case	Grassy area west of CPD #217	Dan Winterich
129	Speer 9mm cartridge case	Grassy area west of CPD #217	Dan Winterich
130	Speer 9mm cartridge case	Grassy area west of CPD #217	Dan Winterich
131	Speer 9mm cartridge case	Grassy area west of CPD #217	Dan Winterich
132	Speer 9mm cartridge case	Underneath Malibu	Dan Winterich

133	Speer 9mm cartridge case	Underneath Malibu	Dan Winterich
134	Speer 9mm cartridge case	Underneath Malibu	Dan Winterich
135	Bullet	Grassy area west of CPD #217	Dan Winterich
136	Bullet fragment	Underneath Malibu	Dan Winterich
137	Bullet fragment	Driveway west of Malibu	Dan Winterich
138	Bullet	Underneath Malibu	Dan Winterich
139	Bullet	Underneath Malibu	Dan Winterich
140	Bullet	Driveway west of Malibu	Dan Winterich
141	Speer 9mm cartridge case	Traffic island	Dan Winterich
142	Bullet fragment	Traffic island	Dan Winterich
143	Speer 9mm cartridge case	Traffic island	Dan Winterich
144	Bullet	Traffic island	Dan Winterich

In conclusion, a total of one hundred forty-four items were collected including one hundred eighteen Speer 9mm cartridge cases, one shotgun shell, and twenty-one bullets/bullet fragments.

See the attached diagrams detailing the specific locations of the evidence, the positions of the vehicles, and the geographic layouts that have been described within this report. The placard numbers in parentheses coincide with the numbers on the diagrams and the placards seen in the photographs.

The above-mentioned evidence was turned over to East Cleveland Detective Joe Dunlap at 1300 hours and the scene was cleared by BCI personnel.

A master CD-R containing all digital photographs was uploaded to LIMS and added as an exhibit to the case file. A copy of this CD-R will be sent to the requesting agency.

Subject Information

Name: Malissa A. Williams
 DOB: 6/20/1982
 SSN: [REDACTED]
 Sex: F
 Race: B

Officer Involved Shooting

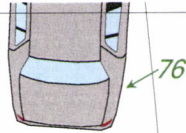
CS-18-12-82-1488

Page 13

Name: Timothy R. Russell
DOB: 12/9/1968
SSN: [REDACTED]
Sex: M
Race: B

A copy of this report is to be sent to:

**Det. Sgt. Scott Gardner
East Cleveland Police Department
14340 Euclid Ave.
East Cleveland, OH 44112**



94

104
103
93
92
91
102

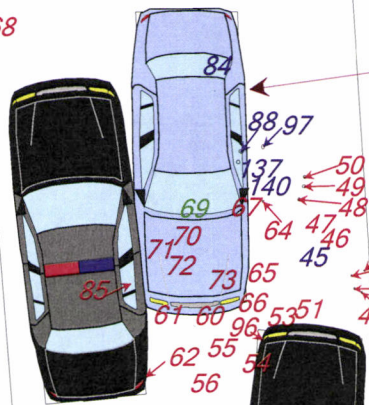


125
127
90
124

68

Item numbers underneath vehicle FSA3495:
front to rear:
135 (bullet)
86 (bullet fragment)
132 (cartridge case)
133 (cartridge case)
82 (cartridge case)
134 (cartridge case)
136 (bullet fragment)
87 (bullet fragment)
138 (bullet)
139 (bullet fragment)

Item numbers from inside of vehicle FSA3495
83 (bullet)
84 (bullet)

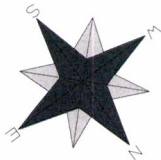
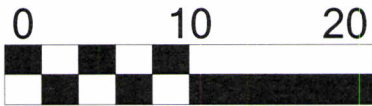


123 112 114
120 118 117 113
121
116 115 89

106

126 32 36
33 31 35
39 30 34 130
29 30 34 105
128 135 131
129
100 27 101
25 99 119
98

11/30/2012
CS-18-12-82-1488
Officer Involved Shooting
14410 Terrace Road
East Cleveland, Ohio
Drawn by: BCI Agents McNeely / Staley



63
57
58
59
21
22
17
16
20
19
18
15
12
13
14
11
10
9
8
7
6
5
4

paved drive

Item numbers underneath unit CPD217:
front to rear:
52 (cartridge case)
75 (bullet)
74 (cartridge case / bullet fragment)
80 (cartridge case)
81 (cartridge case)

Item numbers on windshield of unit CPD217:
left to right:
107 (cartridge case)
108 (cartridge case)
109 (cartridge case)
110 (cartridge case)
122 (cartridge case)

Item numbers inside of unit CPD217:
left to right:
111 (bullet)
78 (cartridge case)
77 (cartridge case)
79 (cartridge case)



Evidence Key for Diagrams
11/30/2012
CS-18-12-82-1488

Placard #	Description	Location	Collected by
1	CPD #217	Driveway	Dan Winterich
2	CPD #238	Driveway	Dan Winterich
3	Chevrolet Malibu (FSA-3495)	Driveway	Dan Winterich
4	Speer 9mm cartridge case	Driveway northeast of CPD #238	Dan Winterich
5	Speer 9mm cartridge case	Driveway northeast of CPD #238	Dan Winterich
6	Speer 9mm cartridge case	Driveway northeast of CPD #238	Dan Winterich
7	Speer 9mm cartridge case	Driveway northeast of CPD #238	Dan Winterich
8	Speer 9mm cartridge case	Driveway northeast of CPD #238	Dan Winterich
9	Speer 9mm cartridge case	Driveway northeast of CPD #238	Dan Winterich
10	Speer 9mm cartridge case	Driveway northeast of CPD #238	Dan Winterich
11	Speer 9mm cartridge case	Driveway northeast of CPD #238	Dan Winterich
12	Speer 9mm cartridge case	Driveway northeast of CPD #238	Dan Winterich
13	Speer 9mm cartridge case	Driveway northeast of CPD #238	Dan Winterich
14	Speer 9mm cartridge case	Driveway northeast of CPD #238	Dan Winterich
15	Speer 9mm cartridge case	Driveway northeast of CPD #238	Dan Winterich
16	Speer 9mm cartridge case	Driveway northeast of CPD #238	Dan Winterich
17	Speer 9mm cartridge case	Driveway northeast of CPD #238	Dan Winterich
18	Speer 9mm cartridge case	Driveway northeast of CPD #238	Dan Winterich
19	Speer 9mm cartridge case	Driveway northeast of CPD #238	Dan Winterich
20	Speer 9mm cartridge case	Driveway northeast of CPD #238	Dan Winterich

21	Speer 9mm cartridge case	Driveway northeast of CPD #238	Dan Winterich
22	Speer 9mm cartridge case	Driveway northeast of CPD #238	Dan Winterich
23	Speer 9mm cartridge case	Driveway northeast of CPD #238	Dan Winterich
24	Speer 9mm cartridge case	Driveway west of CPD #217	Dan Winterich
25	Speer 9mm cartridge	Grassy area west of CPD #217	Dan Winterich
26	Speer 9mm cartridge case	Grassy area west of CPD #217	Dan Winterich
27	Speer 9mm cartridge case	Grassy area west of CPD #217	Dan Winterich
28	Speer 9mm cartridge case	Driveway west of CPD #217	Dan Winterich
29	Speer 9mm cartridge case	Grassy area west of CPD #217	Dan Winterich
30	Speer 9mm cartridge case	Grassy area west of CPD #217	Dan Winterich
31	Speer 9mm cartridge case	Grassy area west of CPD #217	Dan Winterich
32	Speer 9mm cartridge case	Grassy area west of CPD #217	Dan Winterich
33	Speer 9mm cartridge case	Grassy area west of CPD #217	Dan Winterich
34	Speer 9mm cartridge case	Grassy area west of CPD #217	Dan Winterich
35	Speer 9mm cartridge case	Grassy area west of CPD #217	Dan Winterich
36	Shotgun shell	Grassy area west of CPD #217	Dan Winterich
37	Speer 9mm cartridge case	Driveway west of CPD #217	Dan Winterich
38	Speer 9mm cartridge case	Grassy area west of CPD #217	Dan Winterich
39	Speer 9mm cartridge case	Grassy area west of CPD #217	Dan Winterich
40	Speer 9mm cartridge case	Grassy area west of Malibu	Dan Winterich
41	Speer 9mm cartridge case	Driveway west of Malibu	Dan Winterich
42	Speer 9mm cartridge case	Driveway west of Malibu	Dan Winterich

43	Speer 9mm cartridge case	Driveway west of Malibu	Dan Winterich
44	Speer 9mm cartridge case	Driveway west of Malibu	Dan Winterich
45	Bullet	Driveway west of Malibu	Dan Winterich
46	Speer 9mm cartridge case	Driveway west of Malibu	Dan Winterich
47	Speer 9mm cartridge case	Driveway west of Malibu	Dan Winterich
48	Speer 9mm cartridge case	Driveway west of Malibu	Dan Winterich
49	Speer 9mm cartridge case	Driveway west of Malibu	Dan Winterich
50	Speer 9mm cartridge case	Driveway west of Malibu	Dan Winterich
51	Speer 9mm cartridge case	Driveway west of Malibu	Dan Winterich
52	Speer 9mm cartridge case	Underneath CPD #217	Dan Winterich
53	Speer 9mm cartridge case	Driveway west of Malibu	Dan Winterich
54	Speer 9mm cartridge case	Driveway northeast of Malibu	Dan Winterich
55	Speer 9mm cartridge case	Driveway northeast Malibu	Dan Winterich
56	Speer 9mm cartridge case	Driveway northeast of Malibu	Dan Winterich
57	Speer 9mm cartridge case	Driveway northeast of CPD #238	Dan Winterich
58	Speer 9mm cartridge case	Driveway northeast of CPD #238	Dan Winterich
59	Speer 9mm cartridge case	Driveway northeast of CPD #238	Dan Winterich
60	Speer 9mm cartridge case	Driveway northeast of CPD #238	Dan Winterich
61	Speer 9mm cartridge case	Driveway northeast of CPD #238	Dan Winterich
62	Speer 9mm cartridge case	Driveway northeast of CPD #238	Dan Winterich
63	Speer 9mm cartridge case	Driveway northeast of CPD #238	Dan Winterich
64	Speer 9mm cartridge case	Driveway west of Malibu	Dan Winterich
65	Speer 9mm cartridge case	Driveway west of Malibu	Dan Winterich

66	Speer 9mm cartridge case	Driveway west of Malibu	Dan Winterich
67	Speer 9mm cartridge case	Driveway west of Malibu	Dan Winterich
68	Speer 9mm cartridge case	Driveway southeast of CPD #238	Dan Winterich
69	Set of keys	On wiper cowl of Malibu	Dan Winterich
70	Speer 9mm cartridge case	Hood of Malibu	Dan Winterich
71	Speer 9mm cartridge case	Hood of Malibu	Dan Winterich
72	Speer 9mm cartridge case	Hood of Malibu	Dan Winterich
73	Speer 9mm cartridge case	Hood of Malibu	Dan Winterich
74	Speer 9mm cartridge case & bullet fragment	Underneath CPD #217	Dan Winterich
75	Bullet	Underneath CPD #217	Dan Winterich
76	Vehicle part	Driveway near rear passenger's side tire of silver Dodge Charger	Dan Winterich
77	Speer 9mm cartridge case	Front passenger's seat of CPD #217	Dan Winterich
78	Speer 9mm cartridge case	Front passenger's seat of CPD #217	Dan Winterich
79	Speer 9mm cartridge case & bullet fragment	Front passenger's floorboard CPD #217	Dan Winterich
80	Speer 9mm cartridge case	Underneath CPD #217	Dan Winterich
81	Speer 9mm cartridge case	Underneath CPD #217	Dan Winterich
82	Speer 9mm cartridge case	Underneath Malibu	Dan Winterich
83	Bullet	On suitcase in backseat of Malibu	Dan Winterich
84	Bullet	Front driver's side rear window ledge of Malibu	Dan Winterich
85	Speer 9mm cartridge case	Driveway northeast of CPD #238	Dan Winterich
86	Bullet fragment	Underneath Malibu	Dan Winterich
87	Bullet fragment	Underneath Malibu	Dan Winterich

88	Bullet	Driver's side front door frame of Malibu	Dan Winterich
89	Speer 9mm cartridge case	Grassy knoll southeast of CPD #238	Dan Winterich
90	Speer 9mm cartridge case	Grassy knoll southeast of CPD #238	Dan Winterich
91	Speer 9mm cartridge case	Grassy knoll southeast of CPD #238	Dan Winterich
92	Speer 9mm cartridge case	Grassy knoll southeast of CPD #238	Dan Winterich
93	Speer 9mm cartridge case	Sidewalk southeast of CPD #238	Dan Winterich
94	Speer 9mm cartridge case	Sidewalk southeast of CPD #238	Dan Winterich
95	Speer 9mm cartridge case	Driveway southwest of traffic island	Dan Winterich
96	Speer 9mm cartridge case	Driveway northeast of Malibu	Dan Winterich
97	Bullet fragment	Driveway west of Malibu	Dan Winterich
98	Speer 9mm cartridge case	Grassy area west of CPD #217	Dan Winterich
99	Speer 9mm cartridge case	Grassy area west of CPD #217	Dan Winterich
100	Speer 9mm cartridge case	Grassy area west of CPD #217	Dan Winterich
101	Speer 9mm cartridge case	Grassy area west of CPD #217	Dan Winterich
102	Speer 9mm cartridge case	Grassy knoll southeast of CPD #238	Dan Winterich
103	Speer 9mm cartridge case	Grassy knoll southeast of CPD #238	Dan Winterich
104	Bullet fragment	Grassy knoll southeast of CPD #238	Dan Winterich
105	Speer 9mm cartridge case	Grassy area west of CPD #217	Dan Winterich
106	Bullet	Grassy area west of Malibu	Dan Winterich
107	Speer 9mm cartridge case	Wiper cowl of CPD #217	Dan Winterich
108	Speer 9mm cartridge case	Wiper cowl of CPD #217	Dan Winterich
109	Speer 9mm cartridge case	Wiper cowl of CPD #217	Dan Winterich
110	Speer 9mm cartridge case	Wiper cowl of CPD #217	Dan Winterich

111	Bullet	Driver's front seat of CPD #217	Dan Winterich
112	Speer 9mm cartridge case	Grassy knoll southeast of CPD #238	Dan Winterich
113	Speer 9mm cartridge case	Grassy knoll southeast of CPD #238	Dan Winterich
114	Speer 9mm cartridge case	Grassy knoll southeast of CPD #238	Dan Winterich
115	Speer 9mm cartridge case	Grassy knoll southeast of CPD #238	Dan Winterich
116	Speer 9mm cartridge case	Grassy knoll southeast of CPD #238	Dan Winterich
117	Speer 9mm cartridge case	Grassy knoll southeast of CPD #238	Dan Winterich
118	Speer 9mm cartridge case	Grassy knoll southeast of CPD #238	Dan Winterich
119	Speer 9mm cartridge case	Grassy area west of CPD #217	Dan Winterich
120	Speer 9mm cartridge case	Grassy knoll southeast of CPD #238	Dan Winterich
121	Speer 9mm cartridge case	Grassy knoll southeast of CPD #238	Dan Winterich
122	Speer 9mm cartridge case	Wiper cowl of CPD #217	Dan Winterich
123	Speer 9mm cartridge case	Grassy knoll southeast of CPD #238	Dan Winterich
124	Speer 9mm cartridge case	Grassy knoll southeast of CPD #238	Dan Winterich
125	Speer 9mm cartridge case	Grassy knoll southeast of CPD #238	Dan Winterich
126	Speer 9mm cartridge case	Grassy area west of CPD #217	Dan Winterich
127	Speer 9mm cartridge case	Grassy knoll southeast of CPD #238	Dan Winterich
128	Speer 9mm cartridge case	Grassy area west of CPD #217	Dan Winterich
129	Speer 9mm cartridge case	Grassy area west of CPD #217	Dan Winterich
130	Speer 9mm cartridge case	Grassy area west of CPD #217	Dan Winterich
131	Speer 9mm cartridge case	Grassy area west of CPD #217	Dan Winterich
132	Speer 9mm cartridge case	Underneath Malibu	Dan Winterich
133	Speer 9mm cartridge case	Underneath Malibu	Dan Winterich

134	Speer 9mm cartridge case	Underneath Malibu	Dan Winterich
135	Bullet	Grassy area west of CPD #217	Dan Winterich
136	Bullet fragment	Underneath Malibu	Dan Winterich
137	Bullet fragment	Driveway west of Malibu	Dan Winterich
138	Bullet	Underneath Malibu	Dan Winterich
139	Bullet	Underneath Malibu	Dan Winterich
140	Bullet	Driveway west of Malibu	Dan Winterich
141	Speer 9mm cartridge case	Traffic island	Dan Winterich
142	Bullet fragment	Traffic island	Dan Winterich
143	Speer 9mm cartridge case	Traffic island	Dan Winterich
144	Bullet	Traffic island	Dan Winterich

11/30/2012
 CS-18-12-82-1488
 Officer Involved Shooting
 14410 Terrace Road
 East Cleveland, Ohio
 Drawn by: BCI Agents McNeely / Staley



Red color denotes cartridge cases
 Blue color denotes bullets / fragments
 Pink color denotes shotgun shell
 Green color denotes other evidence

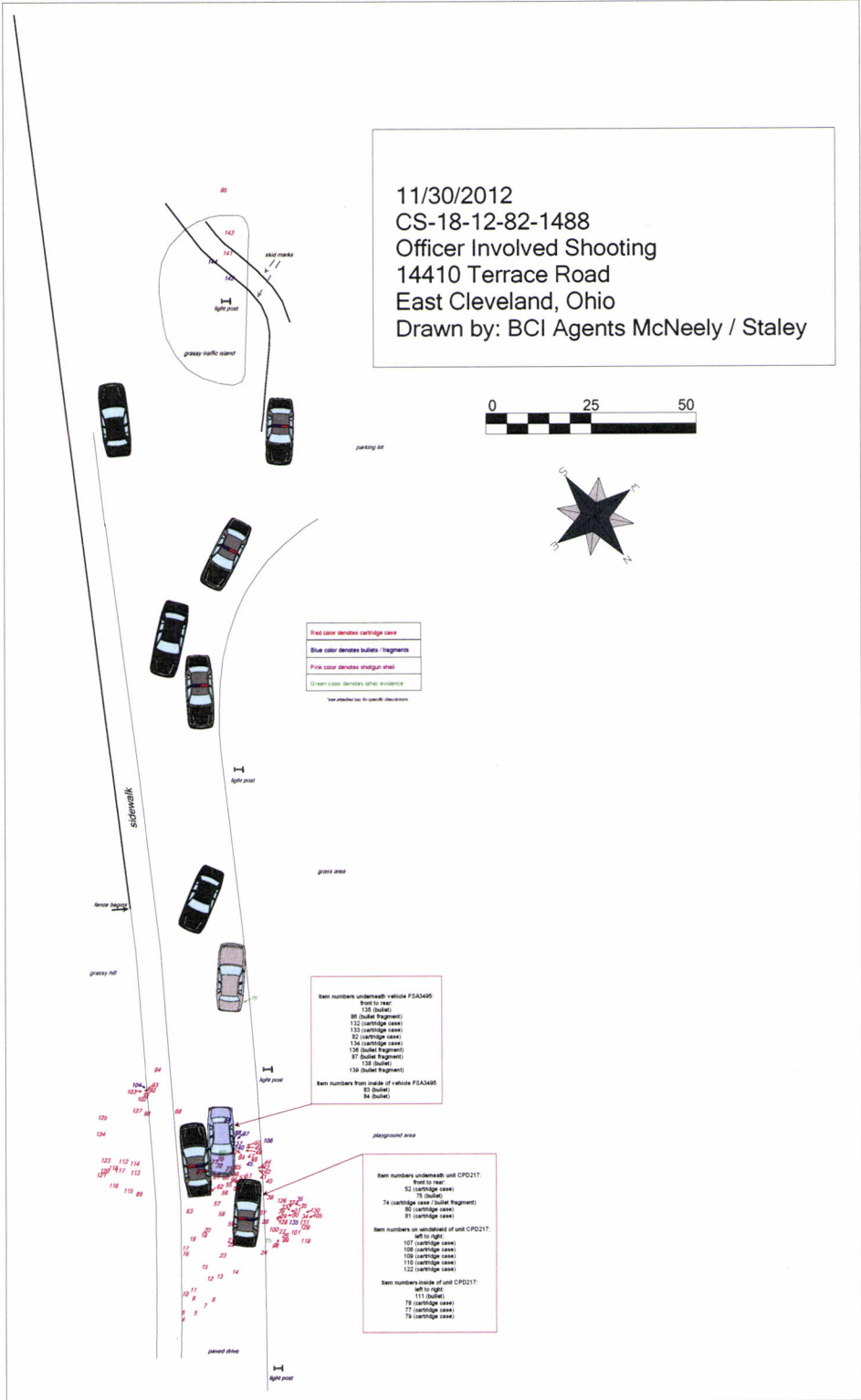
Item numbers underneath vehicle F5A3495
 front to rear:
 120 (bullet)
 80 (bullet fragment)
 112 (cartridge case)
 133 (cartridge case)
 82 (cartridge case)
 124 (cartridge case)
 128 (bullet fragment)
 87 (bullet fragment)
 138 (bullet fragment)

Item numbers from inside of vehicle F5A3495
 83 (bullet)
 84 (bullet)

Item numbers underneath unit CPD217:
 front to rear:
 52 (cartridge case)
 75 (bullet)
 74 (cartridge case) (bullet fragment)
 80 (cartridge case)
 81 (cartridge case)

Item numbers on windshield of unit CPD217:
 left to right:
 107 (cartridge case)
 108 (cartridge case)
 109 (cartridge case)
 110 (cartridge case)
 112 (cartridge case)

Item numbers inside of unit CPD217:
 left to right:
 111 (bullet)
 79 (cartridge case)
 77 (cartridge case)
 72 (cartridge case)



Evidence Key for Diagrams
11/30/2012
CS-18-12-82-1488

Placard #	Description	Location	Collected by
1	CPD #217	Driveway	Dan Winterich
2	CPD #238	Driveway	Dan Winterich
3	Chevrolet Malibu (FSA-3495)	Driveway	Dan Winterich
4	Speer 9mm cartridge case	Driveway northeast of CPD #238	Dan Winterich
5	Speer 9mm cartridge case	Driveway northeast of CPD #238	Dan Winterich
6	Speer 9mm cartridge case	Driveway northeast of CPD #238	Dan Winterich
7	Speer 9mm cartridge case	Driveway northeast of CPD #238	Dan Winterich
8	Speer 9mm cartridge case	Driveway northeast of CPD #238	Dan Winterich
9	Speer 9mm cartridge case	Driveway northeast of CPD #238	Dan Winterich
10	Speer 9mm cartridge case	Driveway northeast of CPD #238	Dan Winterich
11	Speer 9mm cartridge case	Driveway northeast of CPD #238	Dan Winterich
12	Speer 9mm cartridge case	Driveway northeast of CPD #238	Dan Winterich
13	Speer 9mm cartridge case	Driveway northeast of CPD #238	Dan Winterich
14	Speer 9mm cartridge case	Driveway northeast of CPD #238	Dan Winterich
15	Speer 9mm cartridge case	Driveway northeast of CPD #238	Dan Winterich
16	Speer 9mm cartridge case	Driveway northeast of CPD #238	Dan Winterich
17	Speer 9mm cartridge case	Driveway northeast of CPD #238	Dan Winterich
18	Speer 9mm cartridge case	Driveway northeast of CPD #238	Dan Winterich
19	Speer 9mm cartridge case	Driveway northeast of CPD #238	Dan Winterich
20	Speer 9mm cartridge case	Driveway northeast of CPD #238	Dan Winterich

21	Speer 9mm cartridge case	Driveway northeast of CPD #238	Dan Winterich
22	Speer 9mm cartridge case	Driveway northeast of CPD #238	Dan Winterich
23	Speer 9mm cartridge case	Driveway northeast of CPD #238	Dan Winterich
24	Speer 9mm cartridge case	Driveway west of CPD #217	Dan Winterich
25	Speer 9mm cartridge	Grassy area west of CPD #217	Dan Winterich
26	Speer 9mm cartridge case	Grassy area west of CPD #217	Dan Winterich
27	Speer 9mm cartridge case	Grassy area west of CPD #217	Dan Winterich
28	Speer 9mm cartridge case	Driveway west of CPD #217	Dan Winterich
29	Speer 9mm cartridge case	Grassy area west of CPD #217	Dan Winterich
30	Speer 9mm cartridge case	Grassy area west of CPD #217	Dan Winterich
31	Speer 9mm cartridge case	Grassy area west of CPD #217	Dan Winterich
32	Speer 9mm cartridge case	Grassy area west of CPD #217	Dan Winterich
33	Speer 9mm cartridge case	Grassy area west of CPD #217	Dan Winterich
34	Speer 9mm cartridge case	Grassy area west of CPD #217	Dan Winterich
35	Speer 9mm cartridge case	Grassy area west of CPD #217	Dan Winterich
36	Shotgun shell	Grassy area west of CPD #217	Dan Winterich
37	Speer 9mm cartridge case	Driveway west of CPD #217	Dan Winterich
38	Speer 9mm cartridge case	Grassy area west of CPD #217	Dan Winterich
39	Speer 9mm cartridge case	Grassy area west of CPD #217	Dan Winterich
40	Speer 9mm cartridge case	Grassy area west of Malibu	Dan Winterich
41	Speer 9mm cartridge case	Driveway west of Malibu	Dan Winterich
42	Speer 9mm cartridge case	Driveway west of Malibu	Dan Winterich

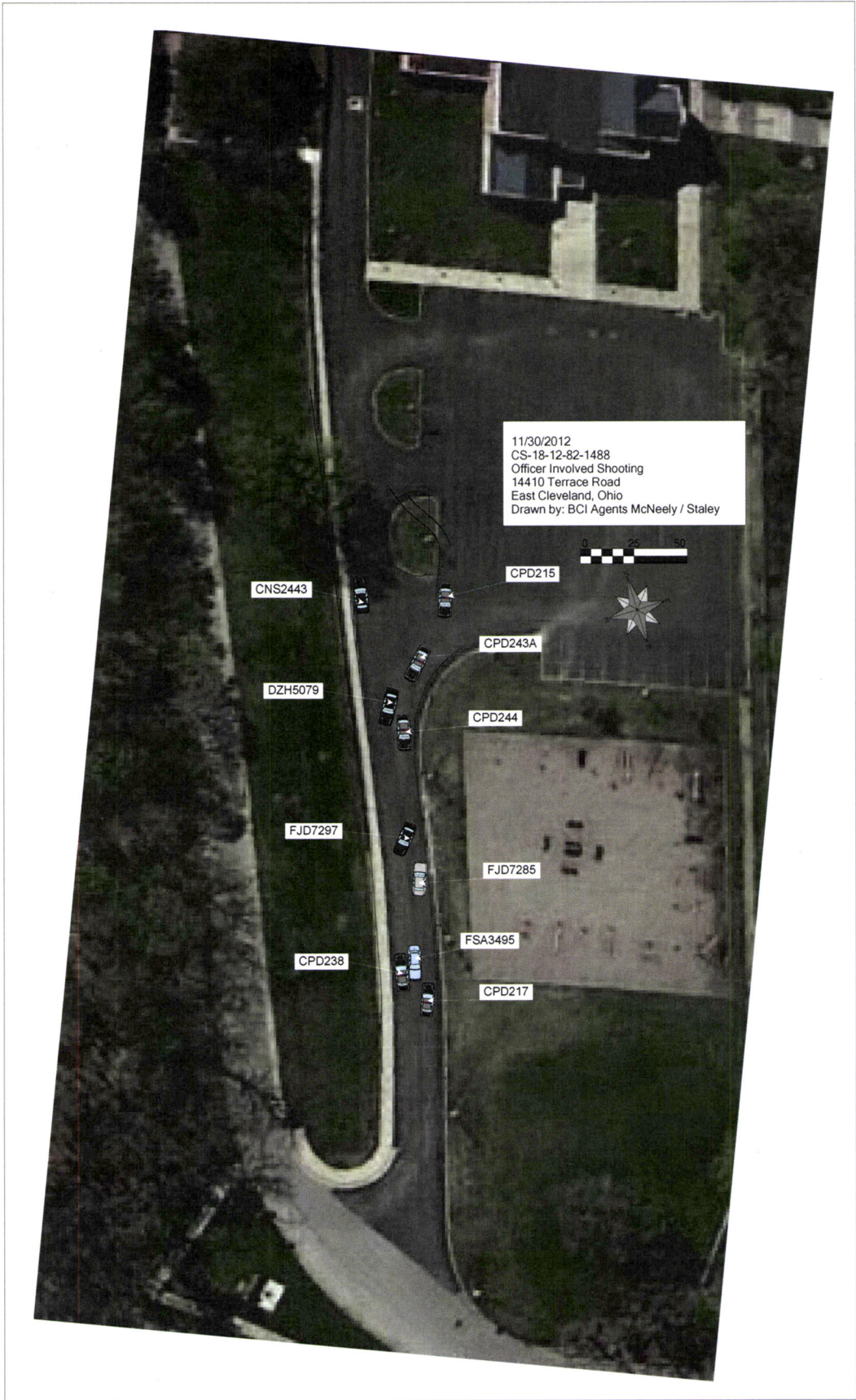
43	Speer 9mm cartridge case	Driveway west of Malibu	Dan Winterich
44	Speer 9mm cartridge case	Driveway west of Malibu	Dan Winterich
45	Bullet	Driveway west of Malibu	Dan Winterich
46	Speer 9mm cartridge case	Driveway west of Malibu	Dan Winterich
47	Speer 9mm cartridge case	Driveway west of Malibu	Dan Winterich
48	Speer 9mm cartridge case	Driveway west of Malibu	Dan Winterich
49	Speer 9mm cartridge case	Driveway west of Malibu	Dan Winterich
50	Speer 9mm cartridge case	Driveway west of Malibu	Dan Winterich
51	Speer 9mm cartridge case	Driveway west of Malibu	Dan Winterich
52	Speer 9mm cartridge case	Underneath CPD #217	Dan Winterich
53	Speer 9mm cartridge case	Driveway west of Malibu	Dan Winterich
54	Speer 9mm cartridge case	Driveway northeast of Malibu	Dan Winterich
55	Speer 9mm cartridge case	Driveway northeast Malibu	Dan Winterich
56	Speer 9mm cartridge case	Driveway northeast of Malibu	Dan Winterich
57	Speer 9mm cartridge case	Driveway northeast of CPD #238	Dan Winterich
58	Speer 9mm cartridge case	Driveway northeast of CPD #238	Dan Winterich
59	Speer 9mm cartridge case	Driveway northeast of CPD #238	Dan Winterich
60	Speer 9mm cartridge case	Driveway northeast of CPD #238	Dan Winterich
61	Speer 9mm cartridge case	Driveway northeast of CPD #238	Dan Winterich
62	Speer 9mm cartridge case	Driveway northeast of CPD #238	Dan Winterich
63	Speer 9mm cartridge case	Driveway northeast of CPD #238	Dan Winterich
64	Speer 9mm cartridge case	Driveway west of Malibu	Dan Winterich
65	Speer 9mm cartridge case	Driveway west of Malibu	Dan Winterich

66	Speer 9mm cartridge case	Driveway west of Malibu	Dan Winterich
67	Speer 9mm cartridge case	Driveway west of Malibu	Dan Winterich
68	Speer 9mm cartridge case	Driveway southeast of CPD #238	Dan Winterich
69	Set of keys	On wiper cowl of Malibu	Dan Winterich
70	Speer 9mm cartridge case	Hood of Malibu	Dan Winterich
71	Speer 9mm cartridge case	Hood of Malibu	Dan Winterich
72	Speer 9mm cartridge case	Hood of Malibu	Dan Winterich
73	Speer 9mm cartridge case	Hood of Malibu	Dan Winterich
74	Speer 9mm cartridge case & bullet fragment	Underneath CPD #217	Dan Winterich
75	Bullet	Underneath CPD #217	Dan Winterich
76	Vehicle part	Driveway near rear passenger's side tire of silver Dodge Charger	Dan Winterich
77	Speer 9mm cartridge case	Front passenger's seat of CPD #217	Dan Winterich
78	Speer 9mm cartridge case	Front passenger's seat of CPD #217	Dan Winterich
79	Speer 9mm cartridge case & bullet fragment	Front passenger's floorboard CPD #217	Dan Winterich
80	Speer 9mm cartridge case	Underneath CPD #217	Dan Winterich
81	Speer 9mm cartridge case	Underneath CPD #217	Dan Winterich
82	Speer 9mm cartridge case	Underneath Malibu	Dan Winterich
83	Bullet	On suitcase in backseat of Malibu	Dan Winterich
84	Bullet	Front driver's side rear window ledge of Malibu	Dan Winterich
85	Speer 9mm cartridge case	Driveway northeast of CPD #238	Dan Winterich
86	Bullet fragment	Underneath Malibu	Dan Winterich
87	Bullet fragment	Underneath Malibu	Dan Winterich

88	Bullet	Driver's side front door frame of Malibu	Dan Winterich
89	Speer 9mm cartridge case	Grassy knoll southeast of CPD #238	Dan Winterich
90	Speer 9mm cartridge case	Grassy knoll southeast of CPD #238	Dan Winterich
91	Speer 9mm cartridge case	Grassy knoll southeast of CPD #238	Dan Winterich
92	Speer 9mm cartridge case	Grassy knoll southeast of CPD #238	Dan Winterich
93	Speer 9mm cartridge case	Sidewalk southeast of CPD #238	Dan Winterich
94	Speer 9mm cartridge case	Sidewalk southeast of CPD #238	Dan Winterich
95	Speer 9mm cartridge case	Driveway southwest of traffic island	Dan Winterich
96	Speer 9mm cartridge case	Driveway northeast of Malibu	Dan Winterich
97	Bullet fragment	Driveway west of Malibu	Dan Winterich
98	Speer 9mm cartridge case	Grassy area west of CPD #217	Dan Winterich
99	Speer 9mm cartridge case	Grassy area west of CPD #217	Dan Winterich
100	Speer 9mm cartridge case	Grassy area west of CPD #217	Dan Winterich
101	Speer 9mm cartridge case	Grassy area west of CPD #217	Dan Winterich
102	Speer 9mm cartridge case	Grassy knoll southeast of CPD #238	Dan Winterich
103	Speer 9mm cartridge case	Grassy knoll southeast of CPD #238	Dan Winterich
104	Bullet fragment	Grassy knoll southeast of CPD #238	Dan Winterich
105	Speer 9mm cartridge case	Grassy area west of CPD #217	Dan Winterich
106	Bullet	Grassy area west of Malibu	Dan Winterich
107	Speer 9mm cartridge case	Wiper cowl of CPD #217	Dan Winterich
108	Speer 9mm cartridge case	Wiper cowl of CPD #217	Dan Winterich
109	Speer 9mm cartridge case	Wiper cowl of CPD #217	Dan Winterich
110	Speer 9mm cartridge case	Wiper cowl of CPD #217	Dan Winterich

111	Bullet	Driver's front seat of CPD #217	Dan Winterich
112	Speer 9mm cartridge case	Grassy knoll southeast of CPD #238	Dan Winterich
113	Speer 9mm cartridge case	Grassy knoll southeast of CPD #238	Dan Winterich
114	Speer 9mm cartridge case	Grassy knoll southeast of CPD #238	Dan Winterich
115	Speer 9mm cartridge case	Grassy knoll southeast of CPD #238	Dan Winterich
116	Speer 9mm cartridge case	Grassy knoll southeast of CPD #238	Dan Winterich
117	Speer 9mm cartridge case	Grassy knoll southeast of CPD #238	Dan Winterich
118	Speer 9mm cartridge case	Grassy knoll southeast of CPD #238	Dan Winterich
119	Speer 9mm cartridge case	Grassy area west of CPD #217	Dan Winterich
120	Speer 9mm cartridge case	Grassy knoll southeast of CPD #238	Dan Winterich
121	Speer 9mm cartridge case	Grassy knoll southeast of CPD #238	Dan Winterich
122	Speer 9mm cartridge case	Wiper cowl of CPD #217	Dan Winterich
123	Speer 9mm cartridge case	Grassy knoll southeast of CPD #238	Dan Winterich
124	Speer 9mm cartridge case	Grassy knoll southeast of CPD #238	Dan Winterich
125	Speer 9mm cartridge case	Grassy knoll southeast of CPD #238	Dan Winterich
126	Speer 9mm cartridge case	Grassy area west of CPD #217	Dan Winterich
127	Speer 9mm cartridge case	Grassy knoll southeast of CPD #238	Dan Winterich
128	Speer 9mm cartridge case	Grassy area west of CPD #217	Dan Winterich
129	Speer 9mm cartridge case	Grassy area west of CPD #217	Dan Winterich
130	Speer 9mm cartridge case	Grassy area west of CPD #217	Dan Winterich
131	Speer 9mm cartridge case	Grassy area west of CPD #217	Dan Winterich
132	Speer 9mm cartridge case	Underneath Malibu	Dan Winterich
133	Speer 9mm cartridge case	Underneath Malibu	Dan Winterich

134	Speer 9mm cartridge case	Underneath Malibu	Dan Winterich
135	Bullet	Grassy area west of CPD #217	Dan Winterich
136	Bullet fragment	Underneath Malibu	Dan Winterich
137	Bullet fragment	Driveway west of Malibu	Dan Winterich
138	Bullet	Underneath Malibu	Dan Winterich
139	Bullet	Underneath Malibu	Dan Winterich
140	Bullet	Driveway west of Malibu	Dan Winterich
141	Speer 9mm cartridge case	Traffic island	Dan Winterich
142	Bullet fragment	Traffic island	Dan Winterich
143	Speer 9mm cartridge case	Traffic island	Dan Winterich
144	Bullet	Traffic island	Dan Winterich



11/30/2012
CS-18-12-82-1488
Officer Involved Shooting
14410 Terrace Road
East Cleveland, Ohio
Drawn by: BCI Agents McNeely / Staley



CNS2443

CPD215

CPD243A

DZH5079

CPD244

FJD7297

FJD7285

CPD238

FSA3495

CPD217

11/30/2012
 CS-18-12-82-1488
 Officer Involved Shooting
 14410 Terrace Road
 East Cleveland, Ohio
 Drawn by: BCI Agents McNeely / Staley

