

Criminal Intelligence Unit

PUBLIC BULLETIN



DAVE YOST
OHIO ATTORNEY GENERAL



Franklin County John Doe

January 29, 2025

Volume 21, Number 1

The Ohio Attorney General's Bureau of Criminal Investigation and the Franklin County Coroner's Office are seeking assistance to identify a deceased man found in Columbus, Ohio, on December 19, 2024. The male was located behind a home on Sullivant Avenue in a shed. He went by the name "Pedro" but his identity cannot be confirmed.

The post-mortem image completed by an Ohio BCI forensic artist. Anyone with information is asked to call the Franklin County Coroner's Office at (614) 525-5290.

John Doe Demographics

Date Recovered: December 19, 2024

Gender: Male

Race/Ethnicity: White Hispanic

Estimated Age Range: 50+

Height: 5'2" (measured)

Weight: 154 lbs (measured)

Hair: Shaggy, dark gray

Facial Hair: Mustache and beard

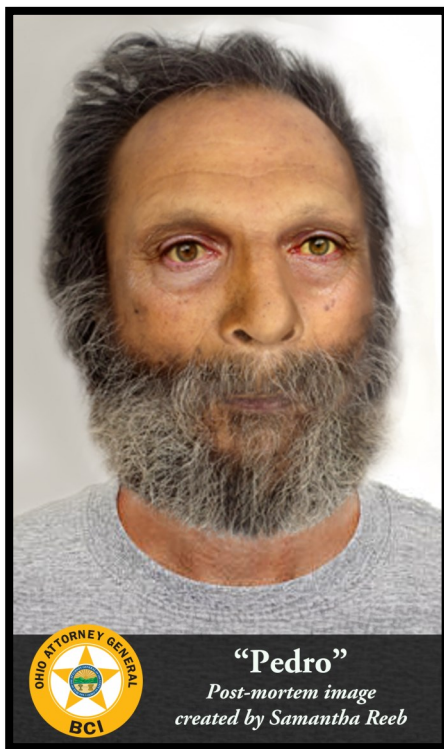
Eyes: Brown

Clothing: Jacket, sweatshirt, t-shirt and jeans

Accessories: Two rosaries (prayer beads) around his neck (shown on 2nd page)

SMT: No visible tattoos, scars, or piercings

Biometrics: Fingerprints & DNA collected and are available for comparison



"Pedro"
Post-mortem image
created by Samantha Reeb

About BCI CIU

The Criminal Intelligence Unit consists of Criminal Intelligence Analysts and a Criminal Intelligence Analyst Supervisor. Analysts are located in BCI London headquarters, as well as regional offices in Youngstown, Bowling Green and Richfield. The members receive and fulfill requests from BCI Agents, local, state, federal law enforcement agencies and task forces. Our mission is to predict and expose criminal activity in order to prevent, eliminate or neutralize the activity.

This publication may be disseminated to the general public.

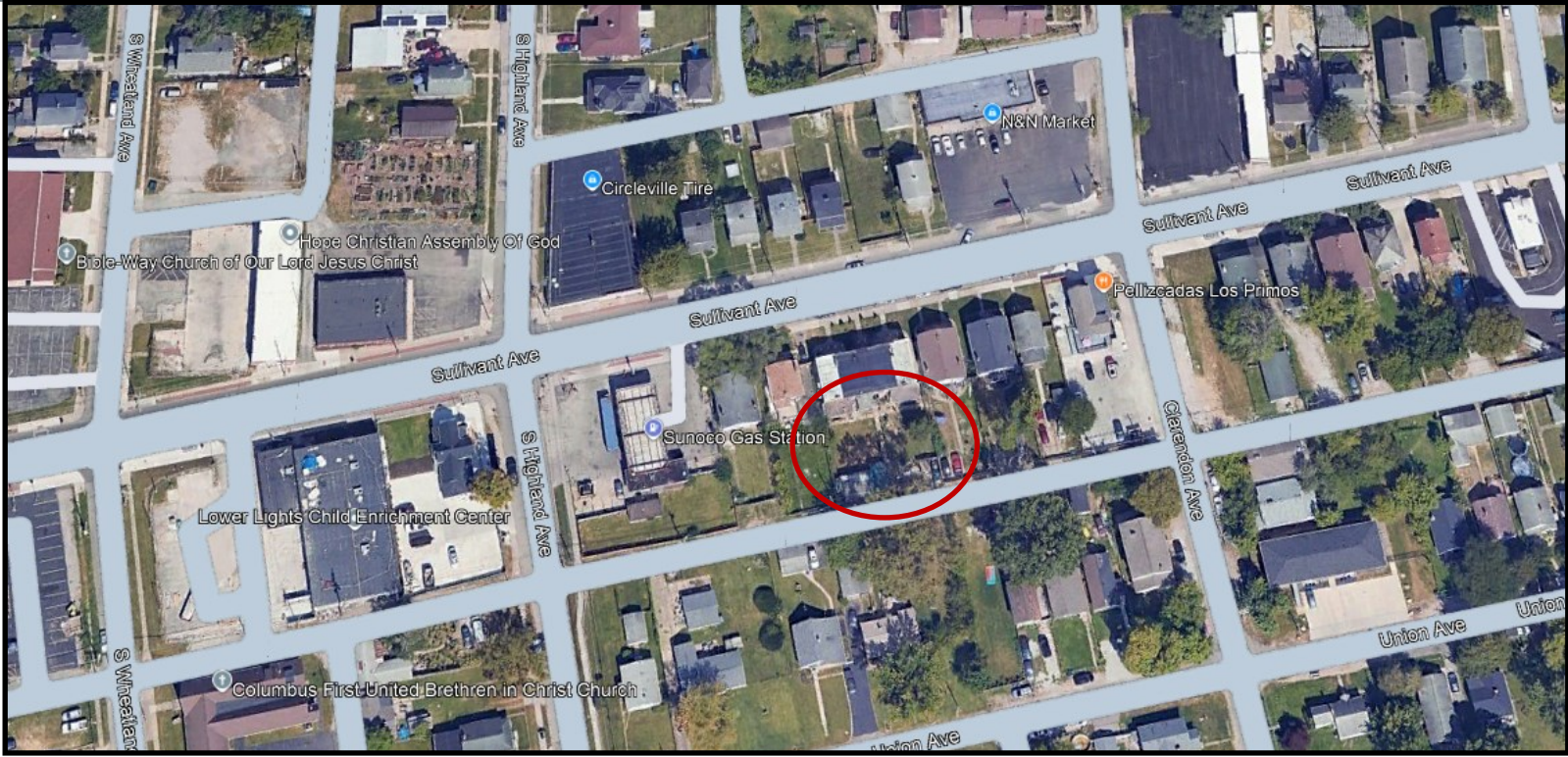
To submit a tip please call: 740-845-2406

Ohio BCI Criminal Intelligence Unit • 1560 S.R. 56 SW • London, OH 43140 • www.OhioAttorneyGeneral.gov



Criminal Intelligence Unit

PUBLIC BULLETIN



The red circle above shows the approximate location where the man was found.



The John Doe wore two rosaries (prayer beads) around his neck.



About BCI CIU

The Criminal Intelligence Unit consists of Criminal Intelligence Analysts and a Criminal Intelligence Analyst Supervisor. Analysts are located in BCI London headquarters, as well as regional offices in Youngstown, Bowling Green and Richfield. The members receive and fulfill requests from BCI Agents, local, state, federal law enforcement agencies and task forces. Our mission is to predict and expose criminal activity in order to prevent, eliminate or neutralize the activity.

This publication may be disseminated to the general public.